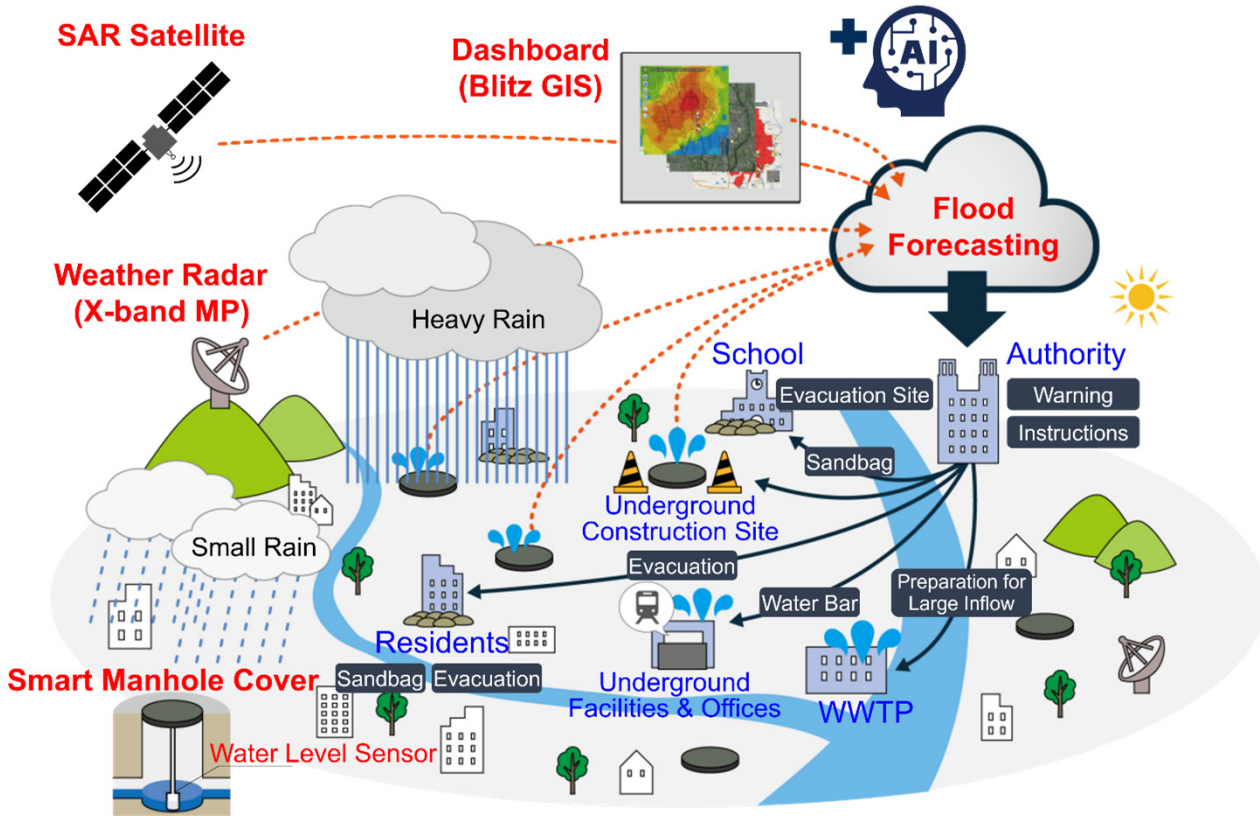


# Real-time Flood Forecasting System for Stormwater Management

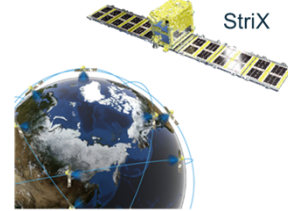
To recognize, inform and announce the flood risk promptly



**Rainfall Radar**  
(Rainfall Information)



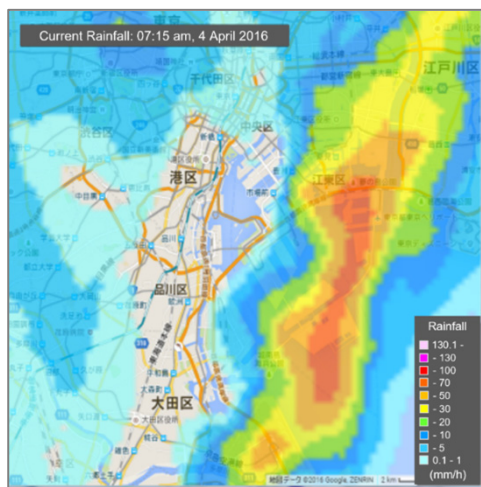
**Smart Manhole Cover**  
(Water Level Information)



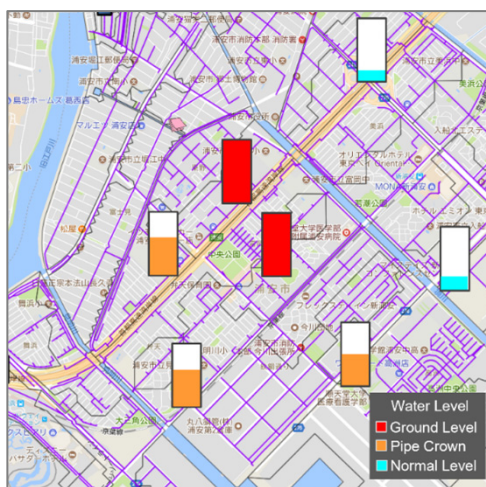
**Small SAR Satellite**  
(Flooded Area Information)



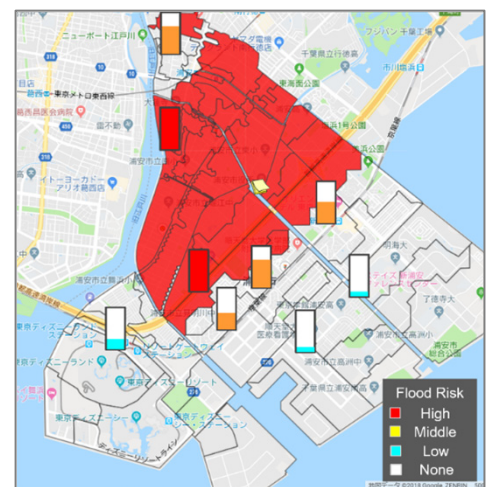
**Blitz GIS**  
(Information Sharing)



**Rainfall Forecasting**  
(Current and Forecasted Rainfall)



**Water Level Forecasting**  
(Current and Forecasted Water Level)

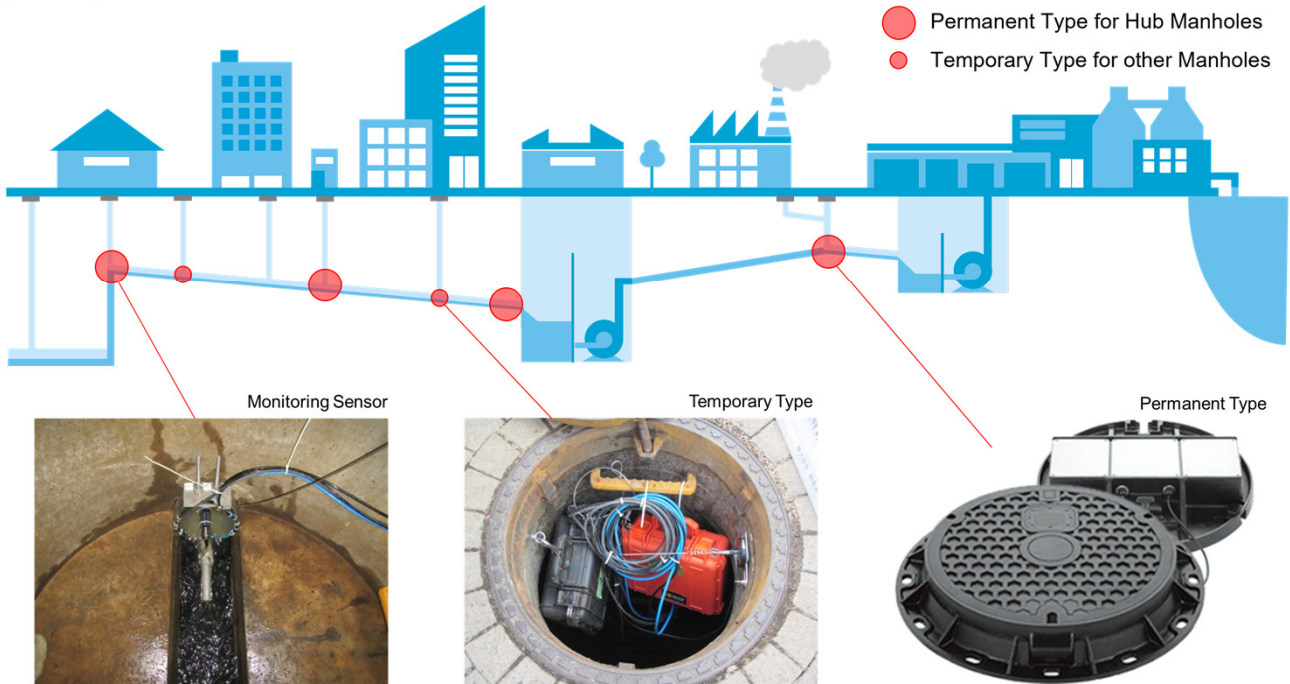


**Flood Risk Distribution**  
(Current and Forecasted Flooded Area)



# Smart Manhole Cover for Real-time Monitoring of Sewer and Drainage Networks

Water level, flow volume and water quality (temperature, electrical conductivity and any other parameters) in sewer and drainage networks are monitored through the Smart Manhole Cover integrated with sensors, battery and IoT gateway.



The monitored data can be checked anytime and anywhere in a real-time through a Cloud Server. Any kind of sensors can be connected to the Smart Manhole Cover.

