



フィリピンでの取り組み事例

2024年度第4回JPRSIセミナー
「官民連携による早期警戒システムの海外展開」

November 6, 2024



Spectee

**We are fighting disasters
Utilizing advanced technologies**

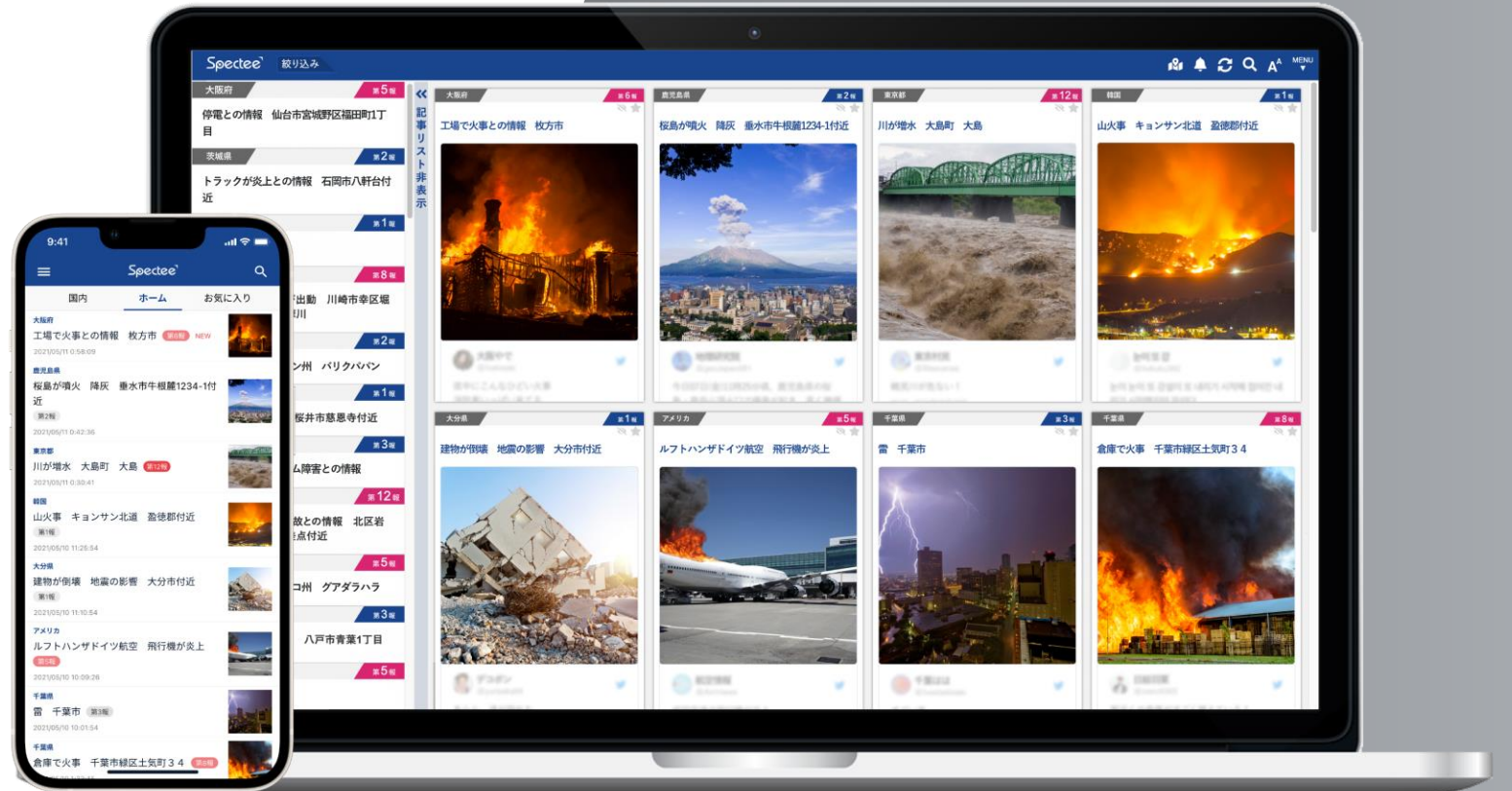
Mission

Visualize the Crisis

Spectee Pro

With power of AI,
it enables to visualize
the **Crisis** in real time.

AI Disaster & Crisis Management Solution

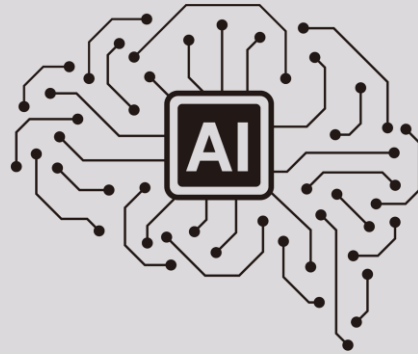


How It Works

Numerous posts
on social media



AI Analysis



What

Flooding

Where

12-3-4
Kamata, Ota-ku
Tokyo

Verification
by humans



24/365 on duty

Delivery to
customers



- ✓ Dashboard
- ✓ Voice
- ✓ Notification
- ✓ Email Alert

Artificial
Intelligence

×

Human
Intelligence

=

Only **Credible**
Information

The number of licenses

has reached **1,100**



Our Customers



Public Sector

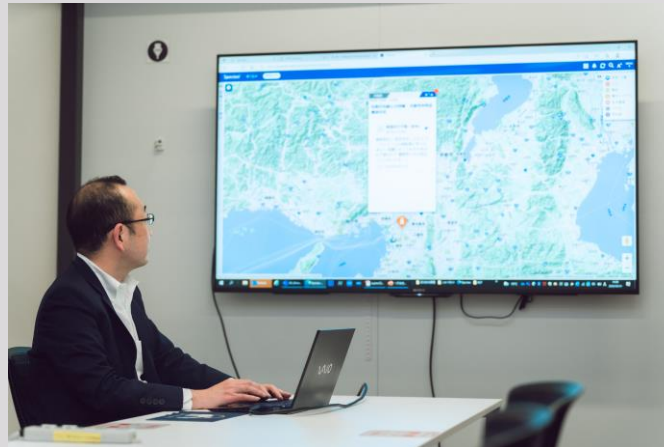


Central agencies
Local governments
Research Institutes

Disaster Prevention/Mitigation
First Response



Private Sector



Manufacturing, Retail,
Infrastructure, Logistics,
Construction, Telecom...etc.

BCP (Business Continuity Planning)
Supply Chain Risk Management
Safety of Customers/employees



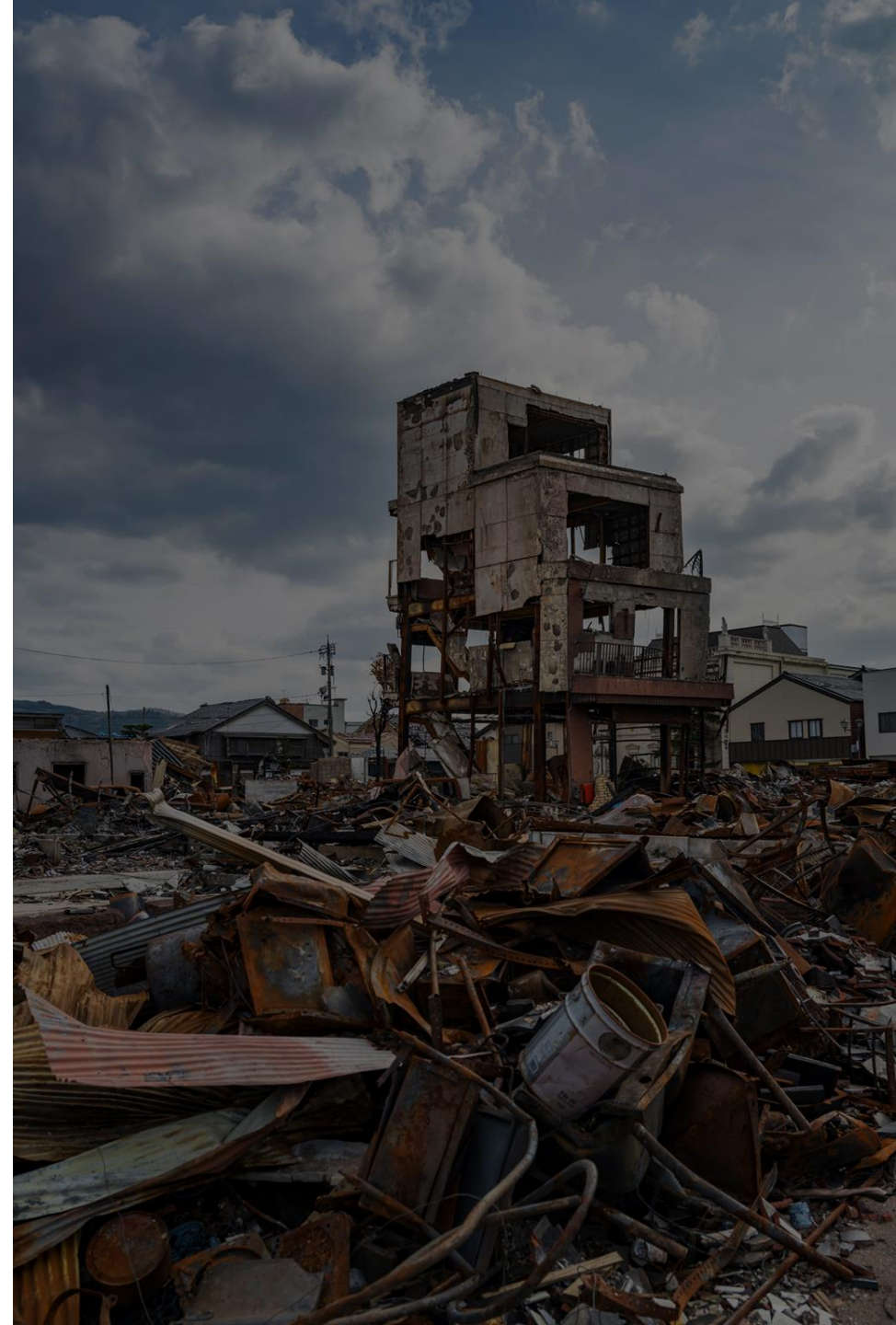
Newsroom



TV Stations
Radio Stations
Newspaper Companies

Detect New Incidents and Accidents

Launch in the Philippines



Why the Philippines?



Disaster-prone country same as Japan



People can speak **English**



Plenty of young people who are **“digital-native”**



Good relationship with Japan traditionally



ASEAN is the key area for future supply chain

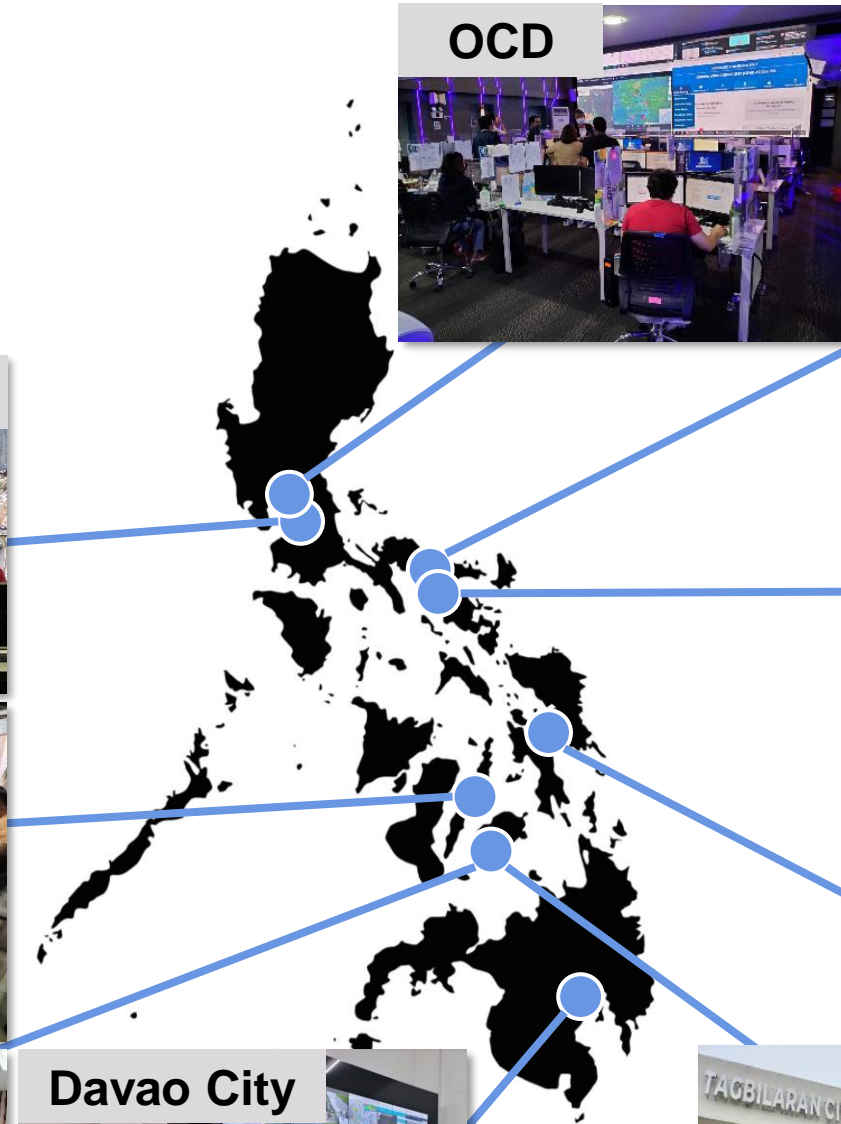


Feasibility Study in 2023

Supported by
JICA Private Sector Partnership Program



Japan International
Cooperation Agency



Service Launch Under JICA Scheme

Service Launch in **October 2024**.

Spectee gives **80 free accounts** to public sector for trial.

Public sector uses it through 2025 and if satisfied,
free account will be **switched to paid from 2026**.

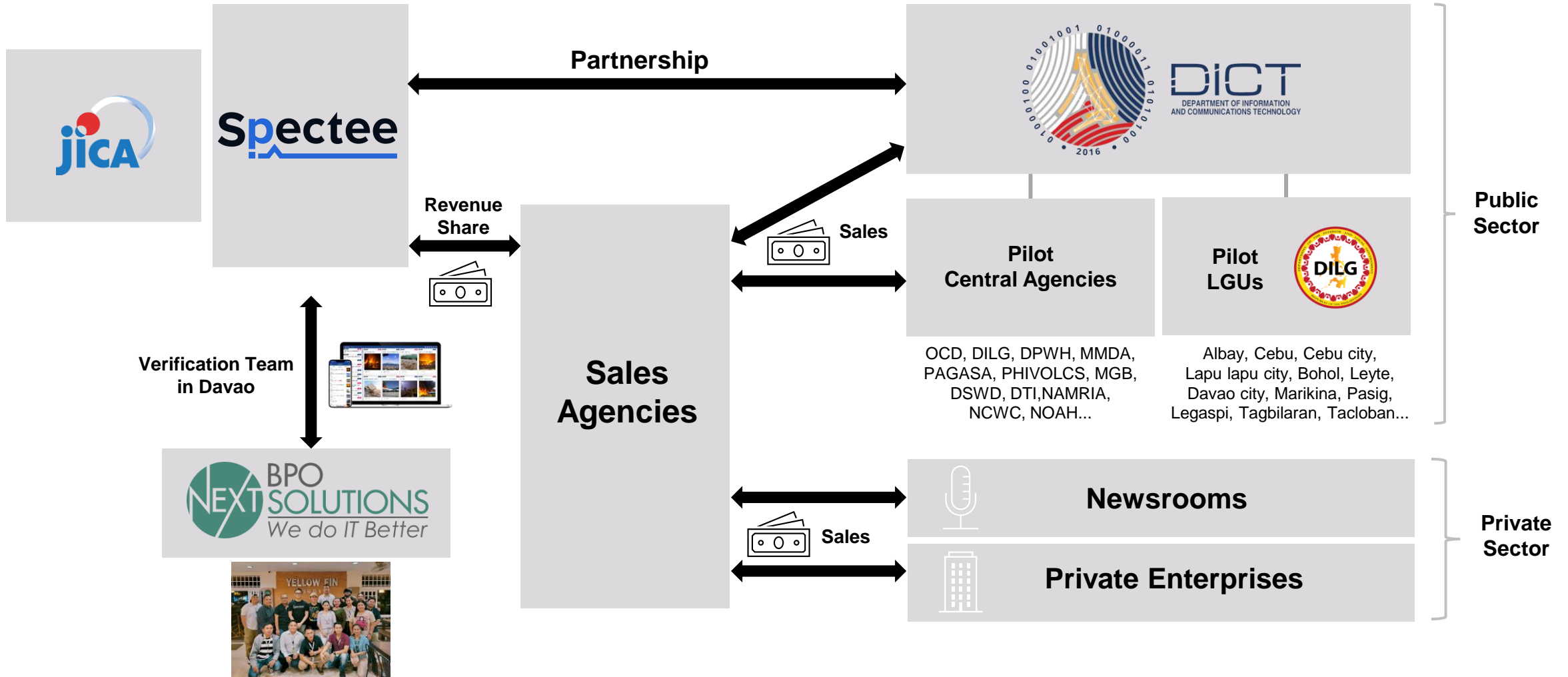
JICA supports Spectee **financially and for coordination**.

Concurrently, Spectee tries to develop **private sector**.



Implementation Scheme

Spectee-JICA Team



Target Customers

Public Sector



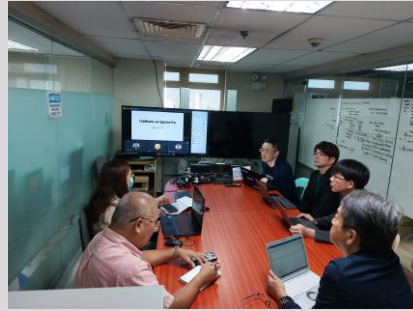
OCD



PAGASA



MMDA



DILG



Many Local Government Units

Private Sector



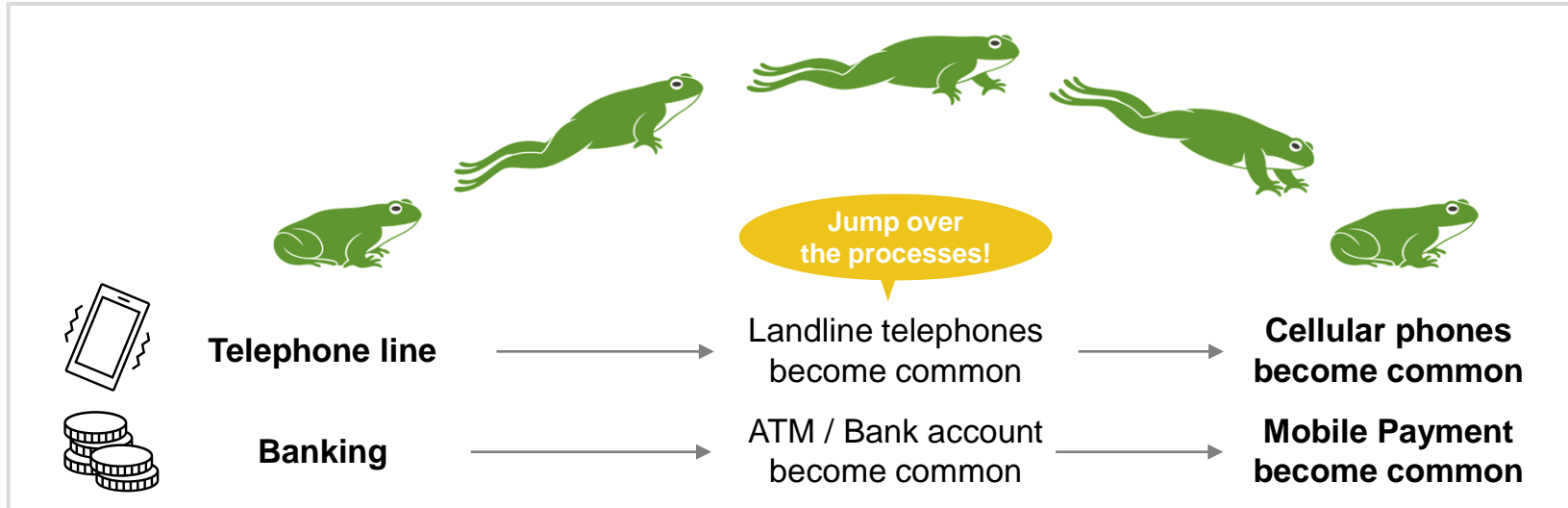
SAN MIGUEL CORPORATION



Newsroom



Leapfrog Development



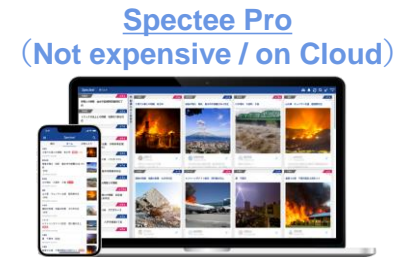
More resilience
Less cost



R&D for long years →



+



||||| Jump straight away! →





Resilience is the foundation of economic development

Towards a **bright** future!

Thank you so much!

Spectree