

# ABOUT PIPE DESIGN

Since we established PIPE DESIGN, Inc. in 1981, we have developed software for water and sewerage system for civil-engineers.

The changes in the environment surrounding the company are changing the industrial structure itself, and the needs of the world are rapidly expanding to meet these changes.

In order to accurately respond to these needs, we will contribute in various ways through technology related to water and sewage services, including research, proposals, contract development, and joint development based on the provision of technology and technical cooperation, not only in Japan but also to the international community.



PIPE DESIGN ,Inc,

<http://www.pipedesign.co.jp/>

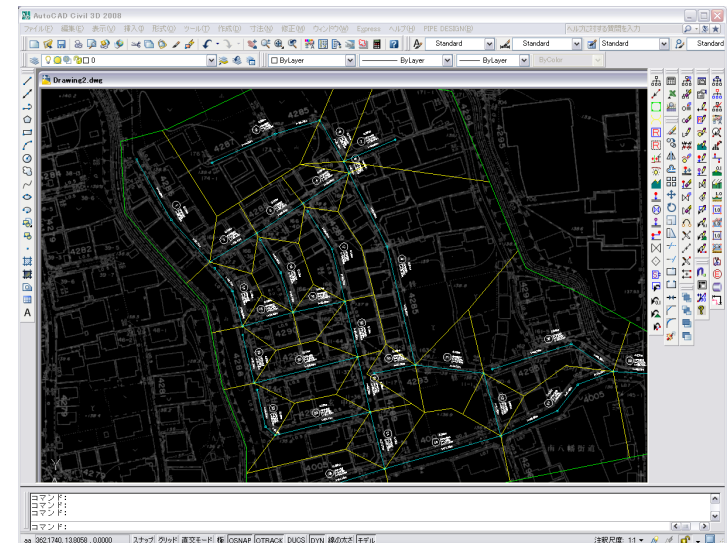
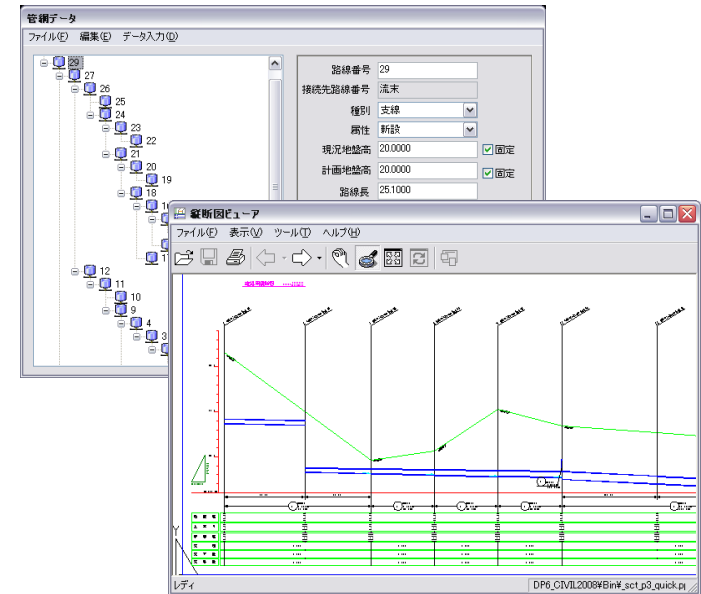
[h-oura@pipedesign.co.jp](mailto:h-oura@pipedesign.co.jp)

# What is PIPE Design Pro?

## Integrated Sewer Plan & Profile Design System **PIPE Design Pro**

**One System for Storm and Sanitary Sewers,  
Urban and Rural Collection**

- **Completely Integrates Plan and Profile Information**
- **Handles Gravity Systems, Pumping, and Vacuum Systems**
- **Support for Water and Gas, Telecom pipes, including  
underground facilities and Ground Contour Lines**
- **Automation Features**
- **Freely Create and Modify Sewer Run Networks**
- **Full Support for Underground Utilities**
- **Use Drawing Layers to Control Styles and Printing**
- **Style Management**
- **Plan-Profile Drawings**
- **Support AutoCAD and BricsCAD**

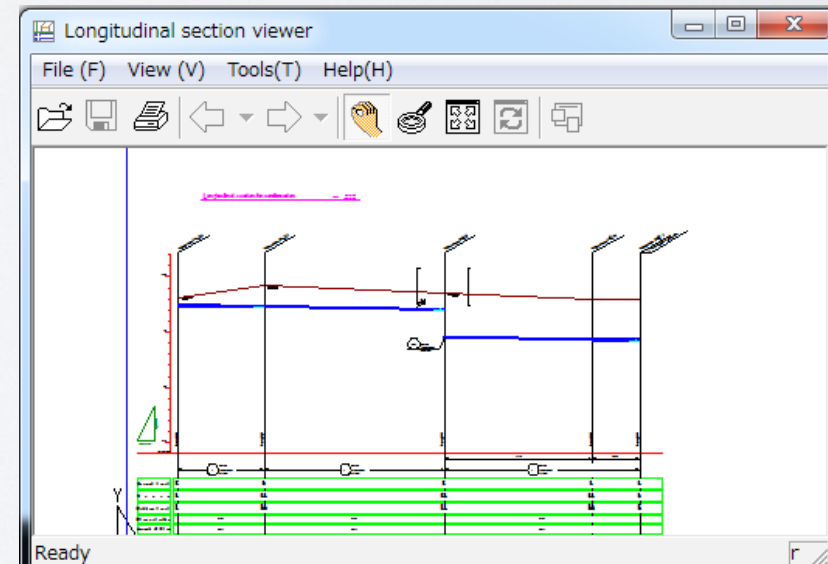
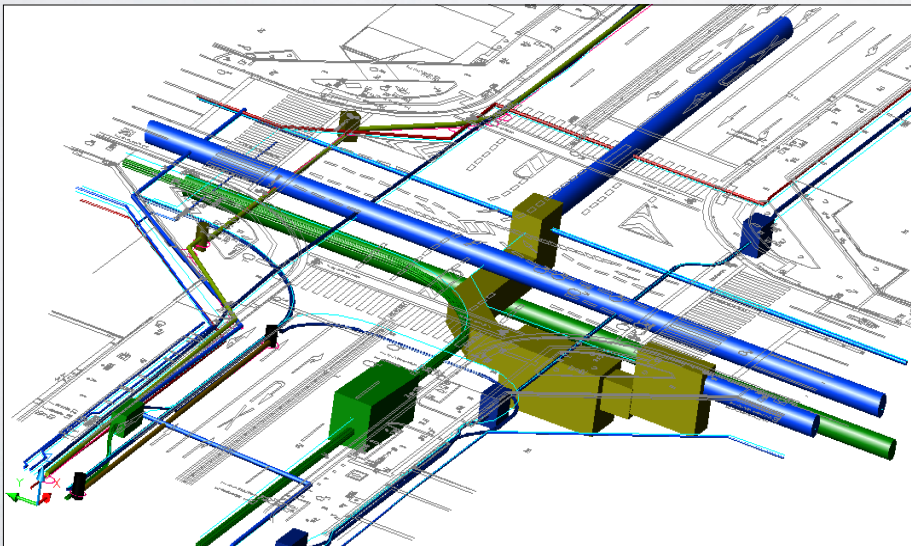




# Drawing & Documents



Route number	Area		Distance		Concentration time		Runoff		Sewer plan						Remarks				
	Rounding system area Each line	Conversion area Each line	Each line	Longest line	Pipe average flow velocity m/s	Each line Longest line	Storm water Use m <sup>3</sup> /s	Sewage quantity m <sup>3</sup> /s	Total flow m <sup>3</sup> /s	Pipe section mm	Slope per mil	Flow velocity m/s	Flow Rate m <sup>3</sup> /s	Bottom Level Start End		UPROUND Level Start End	Cover Start End		
1	1.45	1.45	1.45	42.70	42.70			0.001	0.001	UJ200	3.000	0.743	0.003	-1.407	-1.536	0.000	1.330	40.000 construction	
-	0.00	1.45	0.00	1.45	38.00	81.30			0.001	0.001	UJ200	3.000	0.743	0.003	-1.665	-1.671	0.000	1.330	40.000 construction
-	0.00	1.45	0.00	1.45	41.00	122.30			0.001	0.001	UJ200	3.000	0.743	0.003	-1.691	-1.914	0.000	1.460	40.000 construction
Row to 3																			
2	0.18	0.18	0.18	0.18	23.00	23.00			0.000	0.000	UJ200	3.000	0.743	0.003	-1.407	-1.473	0.000	1.330	40.000 construction
-	0.00	0.18	0.00	0.18	35.20	58.80			0.000	0.000	UJ200	3.000	0.743	0.003	-1.486	-1.604	0.000	1.330	40.000 construction
3	0.76	2.38	0.76	2.38	40.00	162.00			0.002	0.002	UJ200	3.000	0.743	0.003	-1.834	-1.956	0.000	1.330	40.000 construction
-	0.00	2.38	0.00	2.38	33.30	196.20			0.002	0.002	UJ200	3.000	0.743	0.003	-1.876	-2.076	0.000	1.330	40.000 construction
-	0.00	2.38	0.00	2.38	42.00	238.20			0.002	0.002	UJ200	3.000	0.743	0.003	-2.096	-2.222	0.000	2.040	40.000 construction
-	0.00	2.38	0.00	2.38	39.00	277.80			0.002	0.002	UJ200	3.000	0.743	0.003	-2.242	-2.361	0.000	2.040	40.000 construction
4	1.22	3.81	1.22	3.81	35.00	303.00			0.003	0.003	UJ200	3.000	0.743	0.003	-2.381	-2.459	0.000	2.040	40.000 construction
-	0.00	3.81	0.00	3.81	24.20	328.00			0.003	0.003	UJ200	3.000	0.743	0.003	-2.479	-2.552	0.000	2.040	40.000 construction
-	0.00	3.81	0.00	3.81	41.10	389.10			0.003	0.003	UJ200	3.000	0.743	0.003	-2.672	-2.696	0.000	2.040	40.000 construction
-	0.00	3.81	0.00	3.81	39.50	408.00			0.003	0.003	UJ200	3.000	0.743	0.003	-2.715	-2.834	0.000	2.040	40.000 construction
Row to 5																			
5	0.95	0.95	0.95	0.95	19.00	19.00			0.001	0.001	UJ200	3.000	0.743	0.003	-1.407	-1.406	0.000	1.330	40.000 construction
-	0.00	0.95	0.00	0.95	41.50	61.30			0.001	0.001	UJ200	3.000	0.743	0.003	-1.486	-1.611	0.000	1.330	40.000 construction
-	0.00	0.95	0.00	0.95	43.30	104.60			0.001	0.001	UJ200	3.000	0.743	0.003	-1.631	-1.761	0.000	1.330	40.000 construction
6	0.64	1.16	0.64	1.16	43.10	147.70			0.001	0.001	UJ200	3.000	0.743	0.003	-1.781	-1.910	0.000	1.330	40.000 construction
-	0.00	1.16	0.00	1.16	52.10	179.80			0.001	0.001	UJ200	3.000	0.743	0.003	-1.830	-2.026	0.000	1.330	40.000 construction
Row to 7																			
7	0.17	0.17	0.17	0.17	46.20	46.20			0.000	0.000	UJ200	3.000	0.743	0.003	-1.407	-1.546	0.000	1.330	40.000 construction
8	0.76	0.76	0.76	0.76	18.10	426.70			0.005	0.005	UJ200	3.000	0.743	0.003	-3.064	-2.938	0.000	2.750	40.000 construction
-	0.00	0.76	0.00	0.76	28.90	466.00			0.005	0.005	UJ200	3.000	0.743	0.003	-2.898	-3.048	0.000	2.860	40.000 construction



# Business Target

