

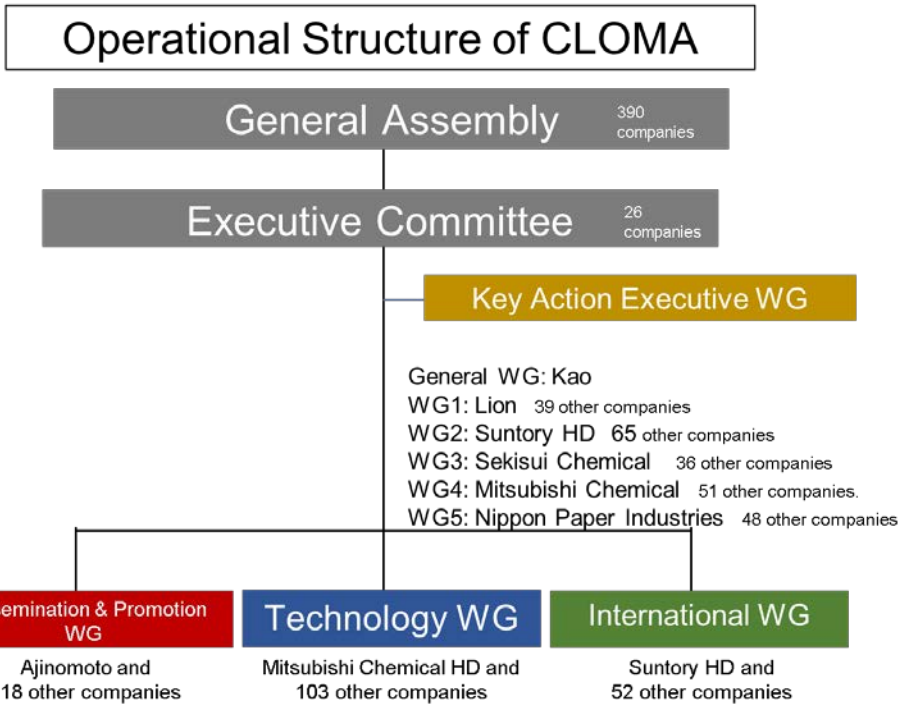
Initiative by Japanese companies in measures against marine plastic litter in Indonesia



Japan Clean Ocean Material Alliance
Indonesia Cooperation Working Group

About CLOMA

- Japan Clean Ocean Material Alliance (CLOMA) was established in January 2019, consisting of companies responsible for consumer product supply chains.
- In order to solve current issues in marine plastic litter, it is necessary to collect plastic litter while also making efforts to prevent more plastics from flowing into the ocean.
- Leveraging the technology and knowhow accumulated by Japan’s industrial community, CLOMA endeavors to accelerate innovation for the 3R (reduce, reuse and recycle) and alternative materials, and to encourage extensive plastic recycling through public-private partnerships. In this way, CLOMA will disseminate its “Japan model,” a made-in-Japan solution that aims to reduce marine plastic litter to zero in cooperation with consumers and society.



As of December 25, 2020

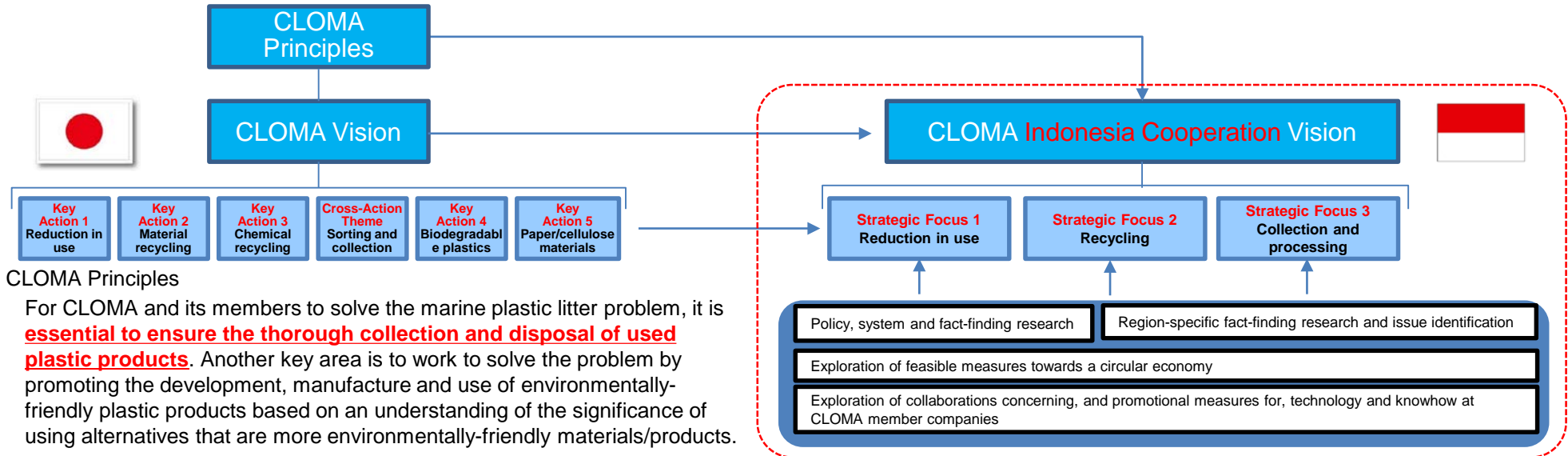
The number of companies is that of companies and organizations and overlaps between the WGs and the Key Action Executive WG.

	2019/1	2020/5	...2030	...2050
Activities for each issue		<div style="border: 2px solid red; padding: 5px;"> <p><u>CLOMA Action Plan->Prevention of flowing into ocean/Resource Circulation</u></p> <p>Key action 1 Reduction of plastic use</p> <p>Key action 2 Improvement of the material recycling rate</p> <p>Key action 3 Development and social implementation of chemical recycle technologies</p> <p>Key action 4 Development and use of biodegradable plastic</p> <p>Key action 5 Development and use of paper and cellulose materials</p> </div>		
Basic Activities		Propose issues	Solution	
		<div style="background-color: #f0e6ff; padding: 5px;"> <p><Dissemination and Promotion WG></p> <p>Best practice introduction seminar, Seeds Needs database, Raise awareness through exhibition</p> </div>		
		<div style="background-color: #d9e1f2; padding: 5px;"> <p><Technology WG></p> <p>CLOMA vision, CLOMA forum, technical seminar</p> </div>		
		<div style="background-color: #d9ead3; padding: 5px;"> <p><International WG></p> <p>International organization network, Indonesia Cooperation WG</p> </div>		
		<div style="background-color: #4f81bd; color: white; padding: 10px; transform: rotate(-45deg); transform-origin: right top;"> <p>Proposal of social system ->Global expansion</p> </div>		

CLOMA Indonesia Cooperation Vision

CLOMA Indonesia Cooperation Vision:

Provide projects that will help Indonesia to achieve its national targets concerning ocean plastics based on the spirit of the CLOMA Principles, thereby contributing to further development in Indonesia.

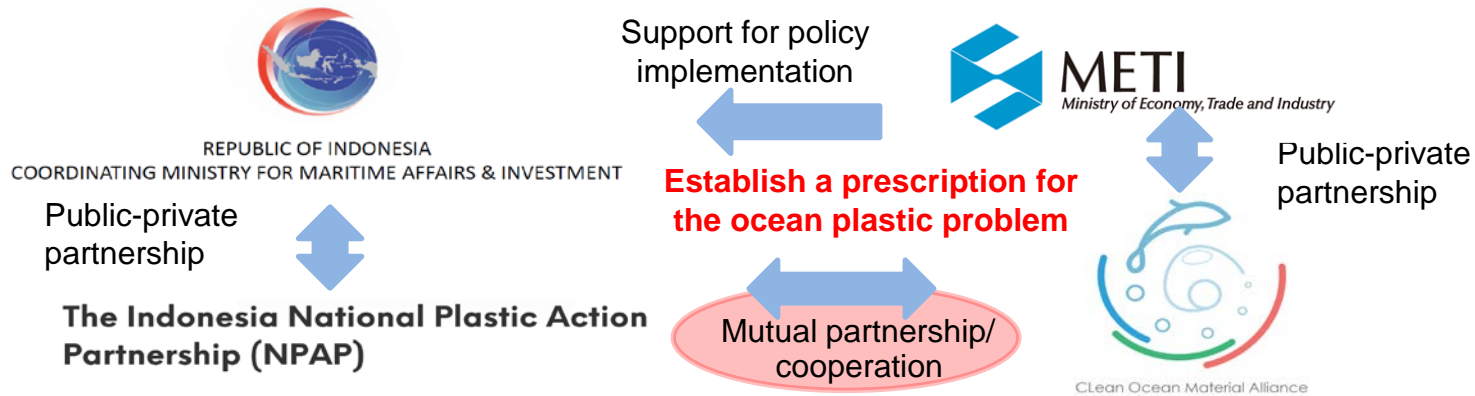


CLOMA Principles

For CLOMA and its members to solve the marine plastic litter problem, it is **essential to ensure the thorough collection and disposal of used plastic products**. Another key area is to work to solve the problem by promoting the development, manufacture and use of environmentally-friendly plastic products based on an understanding of the significance of using alternatives that are more environmentally-friendly materials/products.

Commitments made by the Indonesian government:

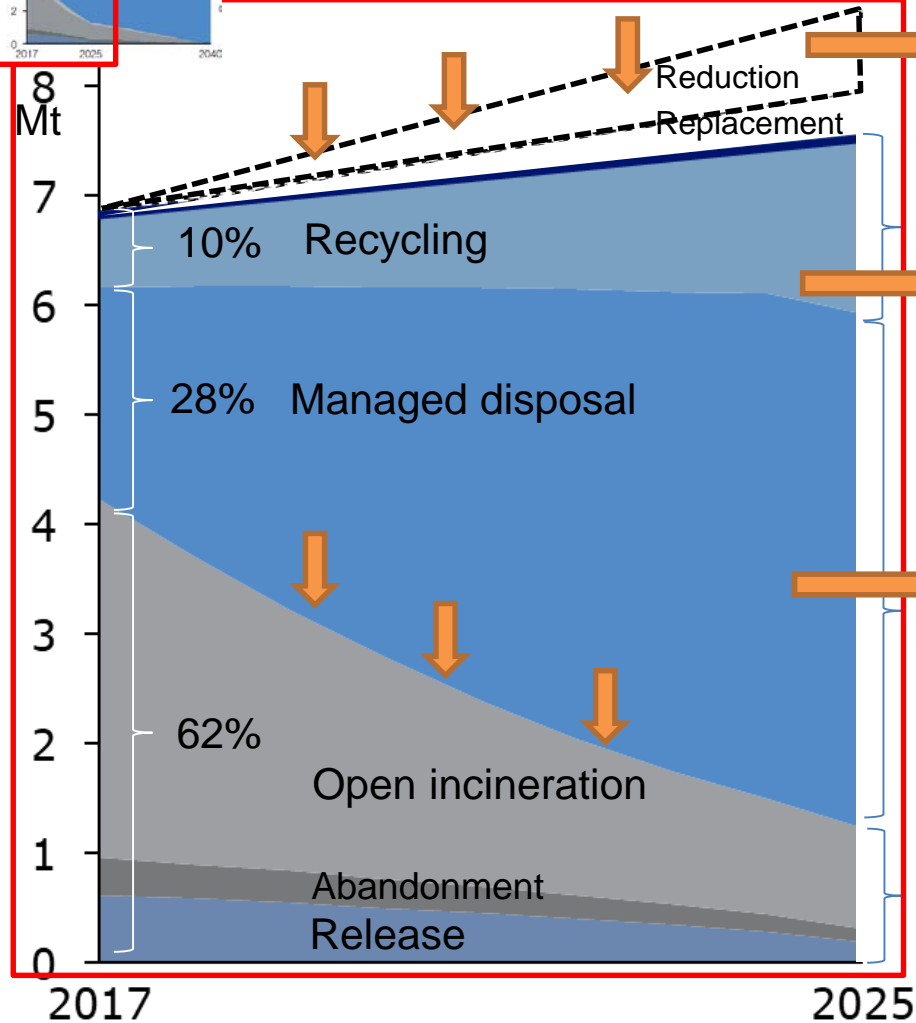
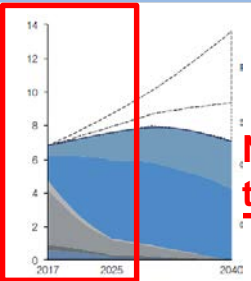
- (1) Achieve a 30% reduction in waste through promoting the 3R by 2025
- (2) Achieve a 70% reduction in plastic waste flowing into the ocean by 2025



Understanding of the Current Realities of Indonesia and Summary of Strategic Focuses

Agenda of CLOMA Indonesia Cooperation WG:
 Explore solutions by referring to NPAP SCS with a view to achieving each target and realizing a circular economy after 2025

NPAP Scenario Change System (SCS) to 2025



NPAP SCS

Reduce checkout bags, individually-wrapped products, bottles and packing materials

CLOMA solutions

Contribute to introduction of **replacing plastic with other materials such as paper and biodegradable plastic** and **design of collection systems**

NPAP SCS

Make 20% of composite plastic products recyclable

CLOMA solutions

Contribute to introduction of **trends for mono-materials and horizontal recycling technology** and **design of reverse supply chains**

NPAP SCS

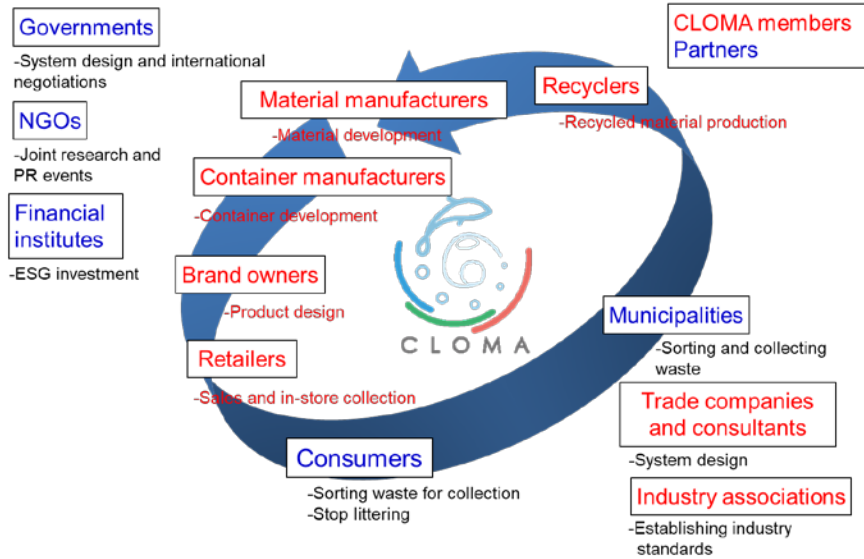
Increase waste collection rate by public or private operators

CLOMA solutions

A wider range of treatment options is essential for increasing collection.
 One treatment option under consideration is to **promote material and chemical recycling as much as possible for value creation**. Contribute to the design and smooth operation of treatment infrastructure, while regarding thermal recovery and managed disposal as urgent/immediate measures

Source: Global Plastic Action Partnership in collaboration with the Indonesia National Plastic Action Partnership, 2020.p20-21

Towards Realization of the Commitments made by the Indonesian government



CLOMA is a group of companies with strengths in different layer of supply chains that work in mutual partnership to **make a package of proposals that suits the realities of Indonesia and aim to **implement sustainable solution models** through the business activities in Indonesia.**

Strategic Focus 1: Reduction in use of plastics

Policy of the Indonesian side (NPAP SCS)
Reduce use of plastics or promote a shift to alternative products from(to) plastics

Relationship with CLOMA Action Plan
Key Action 1:
-Reduce unnecessary use of plastics (made from fossil resources)
Key Action 4:
-Reduce the environmental impact of plastics that are not collected and leak into nature by putting biodegradable plastics to appropriate uses
Key Action 5:
-Curb single-use plastic waste by making effective use of paper and cellulose as alternative materials

Strategic Focus 2: Recycling

Policy of the Indonesian side (NPAP SCS)
Develop technology for reuse and high value added recycling

Relationship with CLOMA Action Plan
Key Action 2:
Promote resource circulation by improving the rate of recycling

Strategic Focus 3: Collection and processing

Policy of the Indonesian side (NPAP SCS)
-Reinforce private- and informal-sector collection systems using national funds
-Increase and enhance managed waste treatment facilities
-Sophisticate recycling technology

Relationship with CLOMA Action Plan
Cross-Action theme: Propose and implement a sorting and collection system that enables smoother circulation of plastic resources
In addition, thermal recycling, which is not mentioned in the CLOMA Key Actions, is an indispensable means of waste treatment, as with chemical recycling (Key Action 3) and resource circulation through recycling (Key Action 2), and should be introduced in an appropriate form.