



Public - Private Sector Dialogue

Capacity Building on
**MEASUREMENT, REPORTING &
VERIFICATION (MRV)**
of Climate Change Mitigation
Phase 2

March 4, 2022
Friday 9:30 am PH

as part of
Philippine-Japan Environmental Week
<https://www.jparsi.go.jp/ew2022ph>



AGENDA

March 4, 2022/ Friday 9:30 am PH

01

Opening

Opening Remarks
Objectives of the WS
Introduction of
Participants

02

Plan for Pilot Project 2022

Data for GHG
Inventory 2020
Insights from
Sectoral Interviews
Q&A

03

Public-Private Sector Dialogue

Panel Discussion:
What factors or
elements would
enable a functional
facility-level MRV?

04

Closing

Overview of the
Pilot Project
Q&A
Closing Remarks



Public - Private Sector Dialogue

Capacity Building on MEASUREMENT, REPORTING & VERIFICATION (MRV)
of Climate Change Mitigation - Phase 2

as part of
Philippine-Japan Environmental Week
<https://www.jparsi.go.jp/ew2022ph>



OPENING REMARKS

Mr. Albert MAGALANG

Chief
Climate Change Information and Technical Support Division
Climate Change Service
Department of Environment and Natural Resources





OPENING REMARKS

Mr. Naomi INOUE

Deputy Director
Office of International Strategy on Climate Change
Ministry of the Environment, Japan

Workshop Objectives

Introduction of Participants

**Mr. Riki
NAKAJIMA**

Overseas
Environmental
Cooperation Center



Objectives of the Workshop

PaSTI Public - Private Sector Dialogue 2022

Riki Nakajima
Researcher, Overseas Environmental Cooperation Center,
Japan

4 March 2022



Public-Private Sector Dialogue

Objective of the workshop:

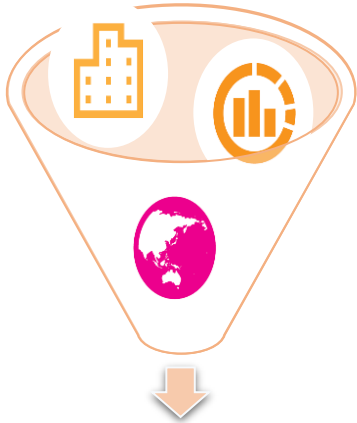
To facilitate the communication between public and private sectors and incorporate ideas from the private sector for the development of a pilot project and potential incentive mechanisms which shall be implemented in 2022 as part of the PaSTI initiative.

Importance of the Dialogue:

In spite of efforts taken by the public and private sectors in relation to measurement of GHG emissions and its corresponding reporting, it is well known that there are gaps in the communication of the purpose of this actions and the support that is needed to comply with such efforts.

This dialogue intends to provide a space where opinions and experiences from both, the public and private sectors can be shared, aiming at getting some conclusions that can further improve measurement and reporting efforts which ultimately can contribute to consolidate the country's MRV system.

✓ PaSTI aims to deliver three key outputs.



Promoting the engagement of non-state actors such as private companies and local governments with incentive mechanism.



Enhancing the capacities and institutional structure in each country under their national development strategies.



Strengthening and streamlining the transparency action at subnational, national and regional level.

Introduction of Participants

Guest speakers:

- Ms. Melissa Cardenas, Environweave
- Mr. Roland Abad Jr., DENR-CCS

Panelists:

- Ms. Gretchen Fontejon Enarle,
President, Pollution Control Association of the Philippines (PCAPI)
- Engr. Jeffrey Mijares,
Executive Director, the Chemical Industries Association of the Philippines (SPIK)
- Engr. Cesar Luis Lim,
The Philippine Society of Ventilating, Air Conditioning, and Refrigerating Engineers (PSVARE)
- Engr. Voltaire Acosta, UN-Habitat

Thank you for your attention!



The PaSTI Secretariat

Email: pasti-sec@oecc.or.jp

WEB: <https://www.oecc.or.jp/en/pasti/index.html>

AGENDA

March 4, 2022/ Friday 9:30 am PH

01

Opening

Opening Remarks
Objectives of the WS
Introduction of Participants

02

Plan for Pilot Project 2022

Data for GHG Inventory 2020
Insights from Sectoral Interviews
Q&A

03

Public-Private Sector Dialogue

Panel Discussion:
What factors or elements would enable a functional facility-level MRV?

04

Closing

Overview of the Pilot Project
Q&A
Closing Remarks



Public - Private Sector Dialogue

Capacity Building on MEASUREMENT, REPORTING & VERIFICATION (MRV) of Climate Change Mitigation - Phase 2

as part of
Philippine-Japan Environmental Week
<https://www.jparsi.go.jp/ew2022ph>



DEPARTMENT OF
ENVIRONMENT
AND NATURAL
RESOURCES

GHG Inventory Requirements for the IPPU and Waste Sector: 2015 & 2020 GHG Inventory

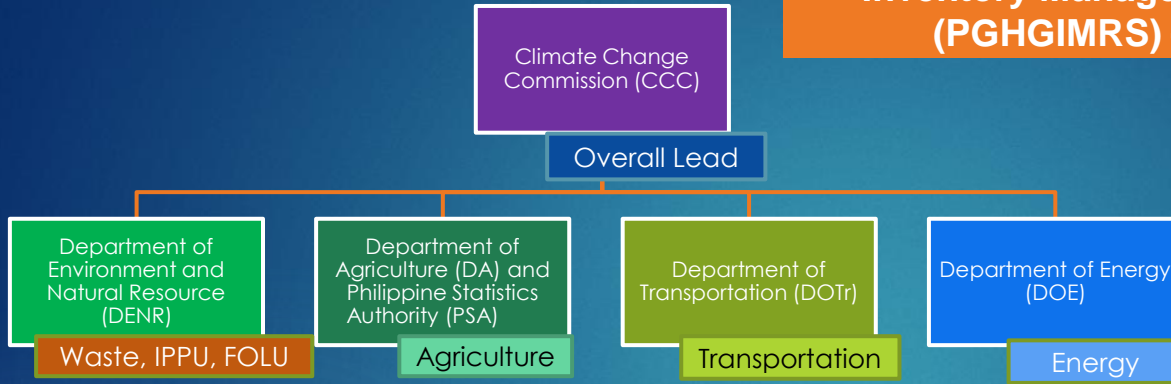
ROLANDO O. ABAD JR.

Climate Change Information and Technical Support Division
Climate Change Service

Presentation Outline:

- ▶ Institutionalization of the Philippine GHG Inventory System
- ▶ IPPU and Waste Sector Categories based on the 2006 IPCC GL
- ▶ Results and Experience in Conducting the 2010 GHG Inventory
- ▶ Data Collection for the 2015 and 2020 GHG Inventory
- ▶ Run through of the Data Collection Matrices

Institutionalization of the Philippine Greenhouse Gas Inventory Management and Reporting System (PGHGIMRS) – EO 174, Series of 2014



Lead Agencies

- Conduct and monitor sector specific GHG inventory
- Report GHGI to CCC based on agreed reporting scheme

National Inventory Reports (NIRs)



The Philippine GHG Inventory process is a whole-of-society approach



IPPU Categories

IPPU

2D Non-energy Use

- Lubricants 2D1
- Paraffin Waxes 2D2
- Solvents 2D3
- Other 2D4

2E Electronics Industry

- Integrated circuit 2E1
- TFT Flat Panel Display 2E2
- Photovoltaics 2E3
- Heat transfer fluid 2E4
- Other 2E5

2F ODS substitutes

- Refrigeration/Air Conditioning 2F1
- Foam Blowing Agents 2F2
- Fire Protection 2F3
- Aerosols 2F4
- Solvents 2F5
- Other 2F6

2G Other Product Manufacture and Use

- Manufacture
 - Use Electrical Equipment 2G1
 - Disposal
- Military Accelerators SF6 and PFCs 2G2
- Other
 - Medical Propellant/Aerosols N2O 2G3
 - Other
- Other 2G4

2H Other

- Pulp and paper 2H1
- Food and beverages 2H2
- Other 2H3

2A Mineral Industry

- 2A1 Cement production
- 2A2 Lime Production
- 2A3 Glass Production
- 2A4 Other (Ceramics)
- 2A5 Other

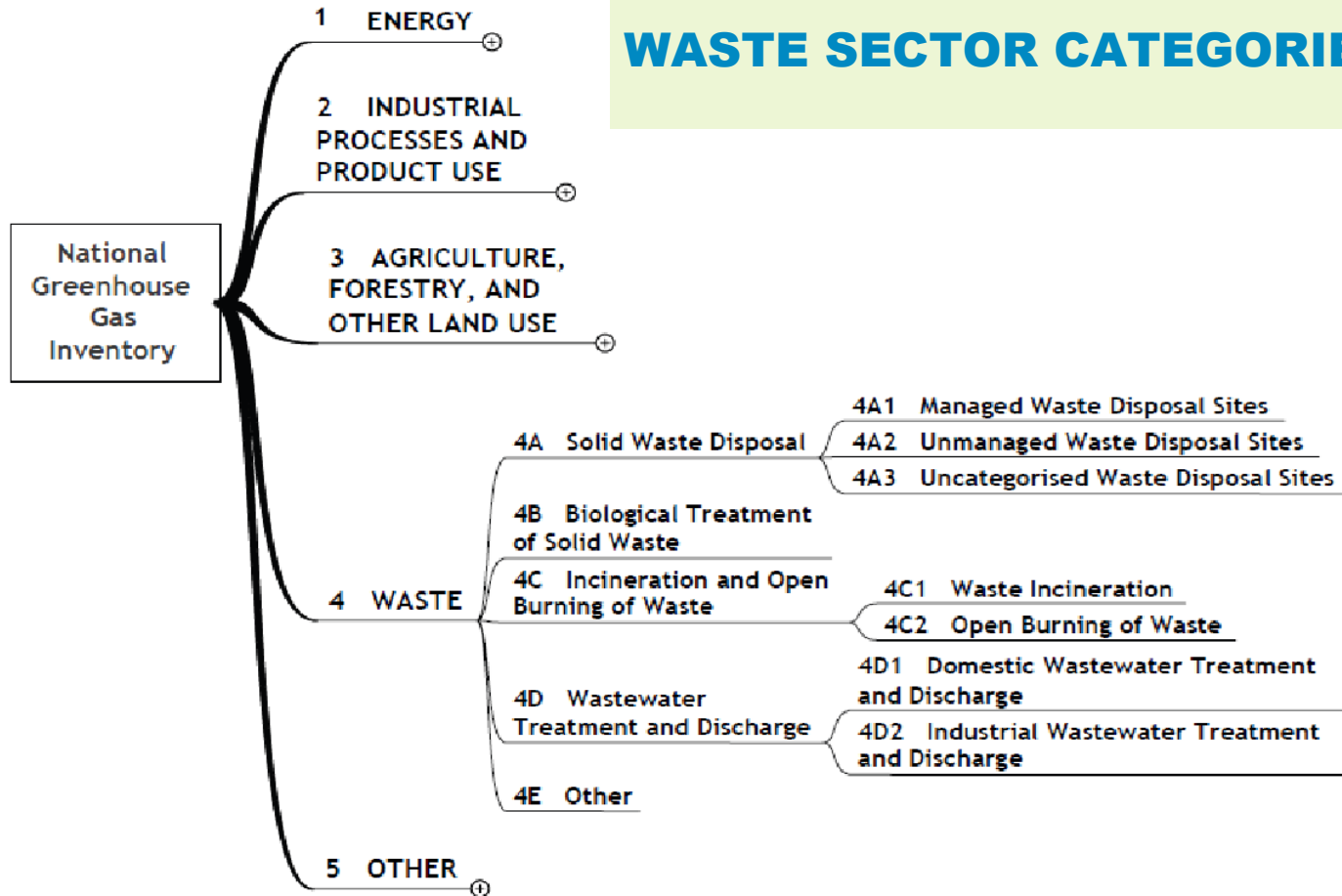
2B Chemical Industry

- 2B1 Ammonia
- 2B2 Nitric Acid
- 2B3 Adipic Acid
- 2B4 Caprolactam, Glyoxal
- 2B5 Carbide
- 2B6 Titanium dioxide
- 2B7 Soda Ash
- 2B8 Petrochemical
 - Methanol
 - Ethylene
 - Ethylene dichloride
 - Ethylene oxide
 - Acrylonitrile
 - Carbon Black
- 2B9 Fluorochemical
 - By-product emissions
 - Fugitive emissions
- 2B10 Other

2C Metal Industry

- 2C1 Iron and Steel
- 2C2 Ferroalloys
- 2C3 Aluminium
- 2C4 Magnesium
- 2C5 Lead
- 2C6 Zinc
- 2C7 Other

WASTE SECTOR CATEGORIES



**SOLID
WASTE**
Subsector

WASTEWATER
Subsector



2010 NATIONAL GHG INVENTORY¹

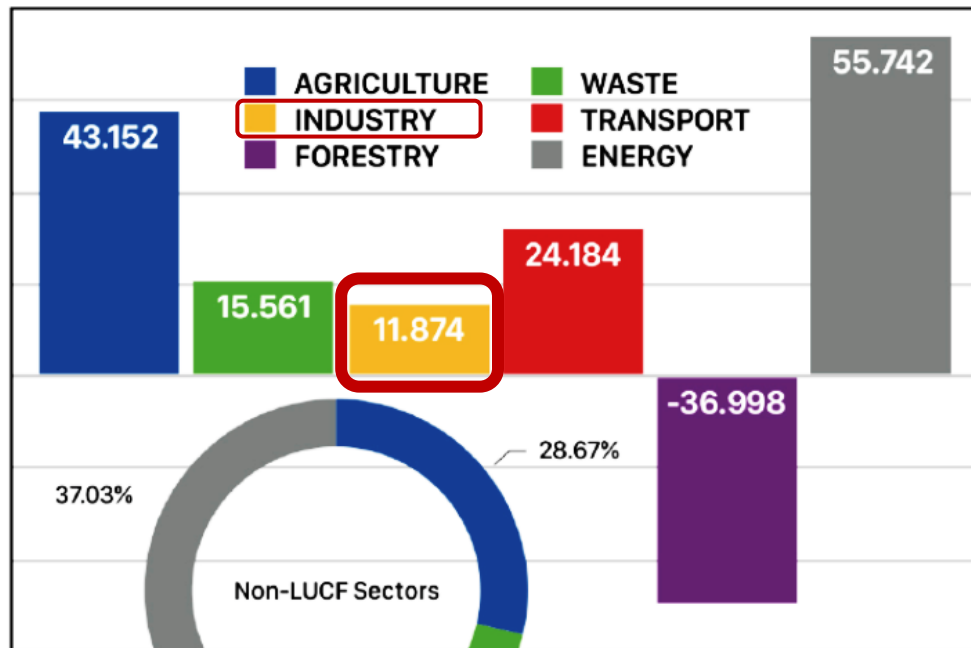
All values are in million metric tons of CO₂ equivalent (Mt CO₂e).

-36.998 Mt CO₂e

LUCF Net Uptake

150.51 Mt CO₂e

Non-LUCF Emissions



Experience from 2010 GHG Inventory

Challenges

Details

Available Data

Incomplete data for use in the data requirements of the 2006 IPCC Guidelines

Data Suitability

Some data are not fully suited to the needs of the GHG inventory.

GHG Inventory team

Inventory is not fully mainstreamed in the regular functions of the Offices.

Activity Data and Emission Factors

No country specific emission factors available for the IPPU and Waste sector.

Lack of data particularly for industrial processes and industrial wastewater.

Use of assumptions and expert judgements in waste sector.

Data Collection/ Consolidation for the 2015 and 2020 GHGI

GHG Inventory Trainings have been conducted for the IPPU and Waste Sector on 17-21 and 25-28 January 2022.

A Memorandum was issued dated 16 February 2022 to kick-start the data collection activity.

Data Collection Matrices have been developed.

[2015&2020 GHGI¥Data Collection Matrix¥IPPU Data Collection Matrix.xlsx](#)

[2015&2020 GHGI¥Data Collection Matrix¥Solid Waste Data Collection Matrix.xlsx](#)

[2015&2020 GHGI¥Data Collection Matrix¥Wastewater Data Collection Matrix.xlsx](#)



Republic of the Philippines
Department of Environment and Natural Resources
Tel Nos. 929-6626 to 29; 929-6633 to 35
926-7041 to 43; 929-6252; 929-1669
Website: <http://www.denr.gov.ph> / E-mail: web@denrgov.ph

MEMORANDUM

TO : **THE DIRECTORS**
Environmental Management Bureau (EMB)
Mines and Geosciences Bureau (MGB)

ALL REGIONAL EXECUTIVE DIRECTORS

REGIONAL DIRECTORS (EMB, MGB)

FROM : **THE UNDERSECRETARY**
Finance, Information Systems, and Climate Change

SUBJECT : **GATHERING AND CONSOLIDATION OF ACTIVITY DATA
FOR THE DEVELOPMENT OF THE 2015 AND 2020 IPPU AND
WASTE SECTOR GREENHOUSE GAS INVENTORY**

DATE : 16 February 2022

This has reference to the Greenhouse Gas (GHG) Inventory Trainings organized by the Climate Change Commission (CCC) for the Industrial Processes and Products Use (IPPU) Sector and Waste Sector on 17-21 January and 25-28 January 2022, respectively.

The training was conducted to support the Department in preparation for the development of National GHG Inventories as officially announced by the CCC on 21 September 2021. The GHG inventories to be prepared for this cycle will cover inventory years 2015 and 2020 as inputs to the Nationally Determined Contribution and Biennial Update Report, and in consideration to the United Nations Framework Convention on Climate Change (UNFCCC) reporting timeframes.

The DENR, particularly EMB has been assigned as the lead agency to conduct, document and monitor GHG emissions of the IPPU and Waste sectors pursuant to Executive Order No. 174, Series of 2014. The EO provides for the institutionalization of the Philippine Greenhouse Gas Inventory Management and Reporting System (PGHGIMRS) that aims to support better planning, archiving, reporting, monitoring and evaluation of GHG emissions and sources and to enable the country to transition towards a climate-resilient pathway for sustainable development.

The gathering and consolidation of data is a critical part in the GHG inventory process. From the experience in developing the 2010 GHG Inventory in 2018, the availability and accessibility of data was identified as a major constraint and at the same time, the biggest area for improvement. In line with this, a rapid data assessment for the IPPU and Waste sector was conducted during the recently concluded trainings to verify the applicability of the IPCC categories, and identify the data needs to be gathered per region. Attached is the data collection matrix to serve as reference and guide in the data collection and consolidation process.



Thank you for your attention.

Insights from Sectoral Consultations on GHG-MRV

Melissa May F. Cardenas
Environweave
For PaSTI



Presentation Outline



01

Policy & Reporting

Monitoring environmental effects from local to global

02

Gathering Insights

Private sector key informant interviews & surveys

03

Designing a Dashboard

You can describe the topic of the section here

04

Data Ecosystem

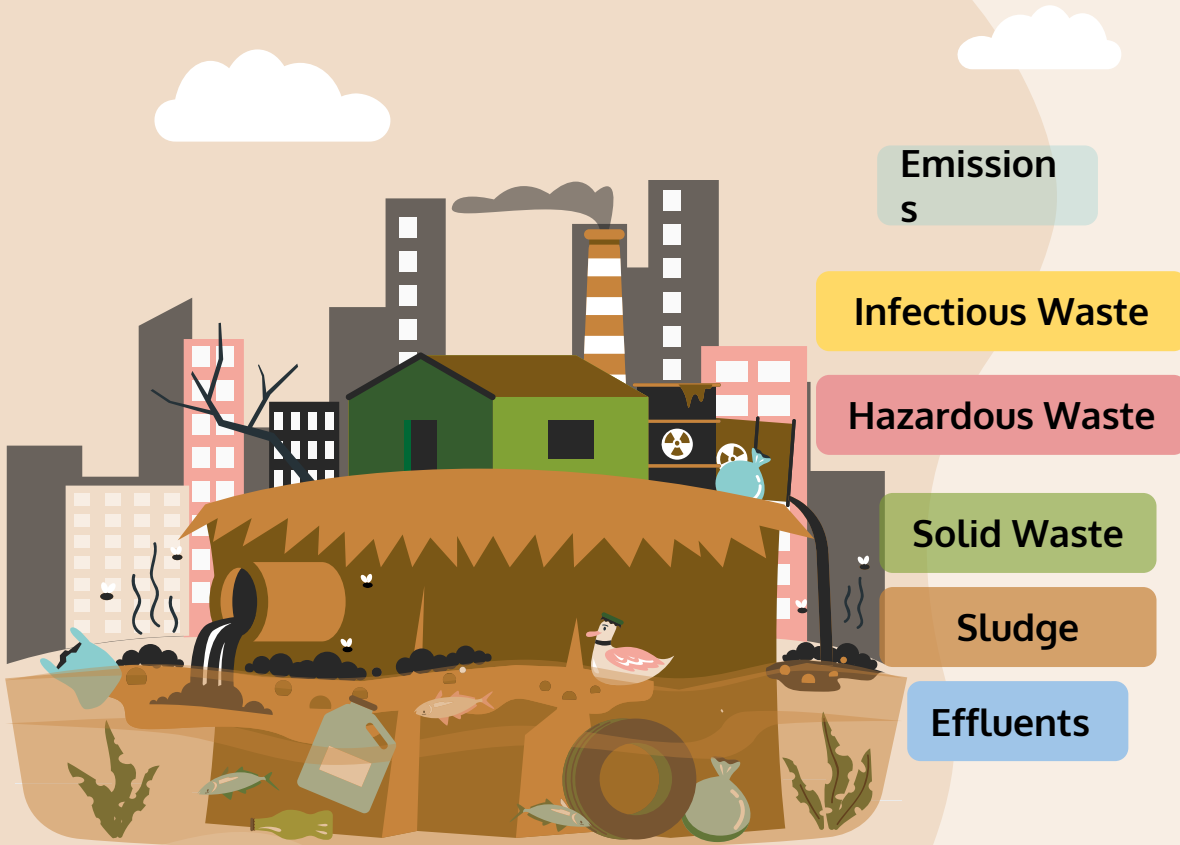
Developing an ecosystem for environmental data

01

Environmental Policy & Reporting Ecosystem



Self Monitoring Reports



Emissions

Infectious Waste

Hazardous Waste

Solid Waste

Sludge

Effluents

RA 8749 (PH Clean Air Act)

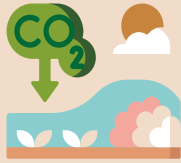
RA 6969 (Toxic Substances and Hazardous and Nuclear Wastes Control)

RA 9003 (Ecological Solid Waste Management Act)

RA 9275 (PH Clean Water Act)

PD 1586 (EIS System)

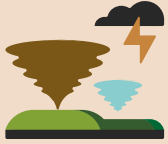
Climate Change



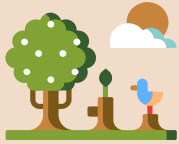
National/ Local Plans Facility-level Reports

SMRs

Disaster RRM



Clean Energy



Land Use



Mun SWM



Marine Litter



Emission
s

Infectious Waste

Hazardous Waste

Solid Waste

Sludge

Effluents

Global Monitoring

GHGs, SLCPs

ODS/ F-Carbons

Hg emissions & waste

Hazardous Waste

POPs

Plastic Pollution

Marine Litter



The background features a light beige color with large, soft-edged organic shapes. On the left, there are clusters of green and brown leaves. On the right, a stylized globe shows green continents and blue oceans. Three white, fluffy clouds are scattered across the scene.

02 Gathering Insights

Private sector
key informant interviews
& surveys

Gathering insights



Sectoral Key Informant Interviews



PaSTI Survey on Greenhouse Gas Measurement, Reporting, and Verification

Good day. This is a survey under the Partnership to Strengthen Transparency for co-Innovation (PaSTI), a collaboration between the governments of the Philippines and Japan.

PaSTI aims to support the private sector and other non-state actors to be fully reflected in national or international efforts. Transparency systems need to be developed to ensure that the private-sector actions are appropriately Measured, Reported and Verified (MRV), both as part of national efforts and to bring credibility to the many international pledges. Accounting every single effort leading to GHG emissions reductions that support NDCs achievement is crucial and should be Measured, Reported and Verified or assessed.

We invite members of the IPPU and waste sectors to participate in this survey. Participants can opt to answer anonymously.

Results will be presented during the Public-Private Sector Dialogue on March 4, 2022, as part of the Philippine-Japan Environmental Week (<https://www.ipsi.co.jp/en/2022oh>)

For further inquiries, please feel free to contact the PaSTI Secretariat at paсти@cecc.or.jp



Online Survey



Discussion points

Data collection

What are your challenges in data collection for greenhouse gas emissions/reduction?

PUSH

Obligations

Do you know of any reports for submitting GHG emissions inventory to government agencies?

Expectations

What are the expectations of the private sector from the government regarding MRV of GHG?



PULL

Voluntary measurement

Are there any ongoing voluntary GHG measurement activities in your company/ facility/ organization?

Increasing engagement

How can the the private sector engage more actively in GHG transparency activities?

Voluntary measurement

Are there any ongoing voluntary GHG measurement activities in your company/ facility/ organization?



No

Yes

Not required by any law re: GHG emissions...

None, but trainings on GHG are encouraged

Not by our local sales offices, but might be done by our factory abroad

... but we are required to report to the city and DENR-EMB regarding our performance and emissions (of concern).

Indirectly, through our facility energy consumption (Module 1 in SMR)...

Yes, but participating in carbon trade was also costly for the company

...and may be converted to equivalent GHG reduction if part of company KPI's

Our institution/ school network has a low-carbon roadmap

Yes, as part of CDM/ JCM etc.

Yes, as part of mother company EHS policy.

Obligations to report

Do you know of any reports for submitting GHG emissions inventory to government agencies?



PUSH

No

Yes

Not required by any law re: GHG emissions...

... We used to, but we delisted so now we no longer submit to SEC

None, but if there is a policy we will comply.

All publicly listed companies (PLCs) are required to report sustainability data to SEC annually in compliance to SEC Memorandum Circular No. 4, Series of 2019.s

Data collection

What are your challenges in data collection for greenhouse gas emissions/ reduction?



Methodology

Management

Analysis

If we knew how, we would.

Provide a framework or baseline methodology/ guidance document

First clarify the standard methodology - where do we start? What to measure for our sector? How do we measure?

Show us the comparison of these methodologies so we can provide more accurate data for computations.

Collecting Scope 3 data especially on Transport

Data collection requires instrumentation based on global standards and a special discipline for recording and reporting

Lack of personnel, equipment, time, funds to start or sustain

accuracy of emission factors used for calculation

Challenge of data cleaning, harmonization

After this, then what?



Expectations of Gov't

What are the expectations of the private sector from the government regarding MRV of GHG?



Policy

Process

Purpose

Industries will comply as long as they understand the purpose and there are clear guidelines.

Wary that operations data will be used to issue a new regulatory policy

If it is a part of regulation, we will comply.

Low GHG as part of product standards

Stratified requirements depending on size of operations

An easy platform for reporting e.g. dashboard, online, app, etc.

We hope it won't be a big burden for us to comply (cost, personnel, time)

A helping hand approach rather than regulatory

Mutual trust and transparency

Communicate that this is for the improvement of the industry or the economy as a whole

As part of overall Good Governance

Harmonization and alignment of environmental policy with economic/ development policy.

Increasing private sector engagement

How can the the private sector engage more actively in GHG transparency activities?



Demands

Incentives

Advocacies

If the market demands it

High cost of electricity and utilities in the PH

If there is a useful tool for easy MRV

Challenge of EPR concept

It is difficult without any incentive

How to measure gains, monetize GHG reduction

Linkage to financial subsidies, grants

Easy adaptation via low-hanging fruits

This is our company's advocacy as well.

If consumers appreciate environmental sustainability as a good investment despite initial cost.

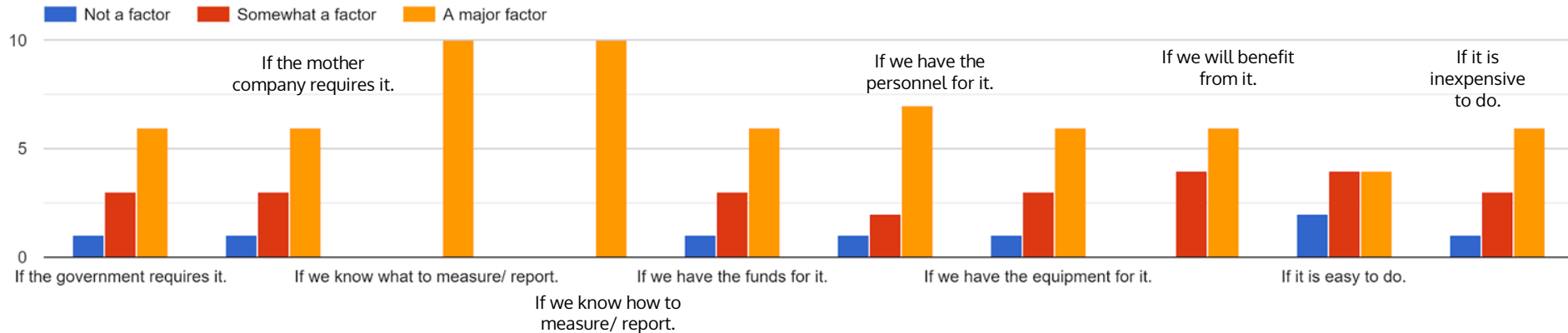
If consumers appreciate our efforts



Key Factors for GHG MRV

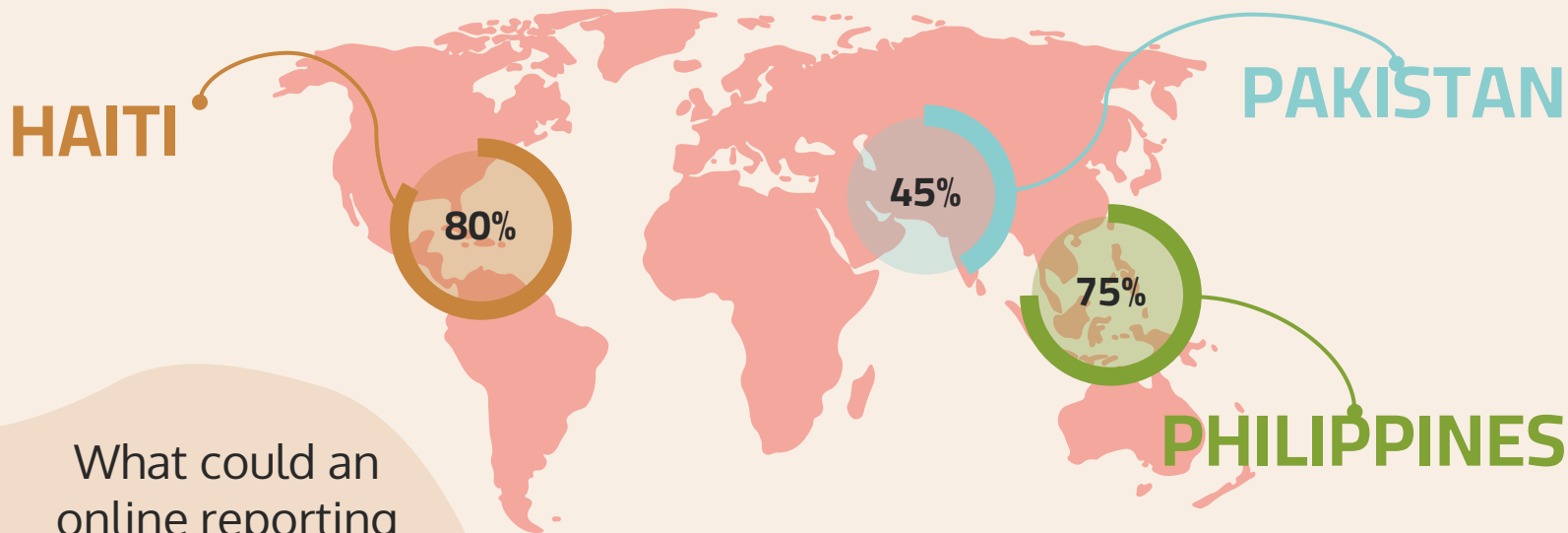
- 1) If we **know what & how** to measure/ report
- 2) If we **benefit** from doing so
- 3) If we have the **resources** to do so
- 4) If we are **required** to do so

For your company/ facility/ organization, which of the following would be key factors in establishing a GHG reporting system?



03

Designing a Dashboard



What could an online reporting system look like?

Evolution of Reporting

01

Paper



02

Digitized



03

Digital



04

Database



Storage



Organization



Processing



National Integrated Climate Change Database Information and Exchange System

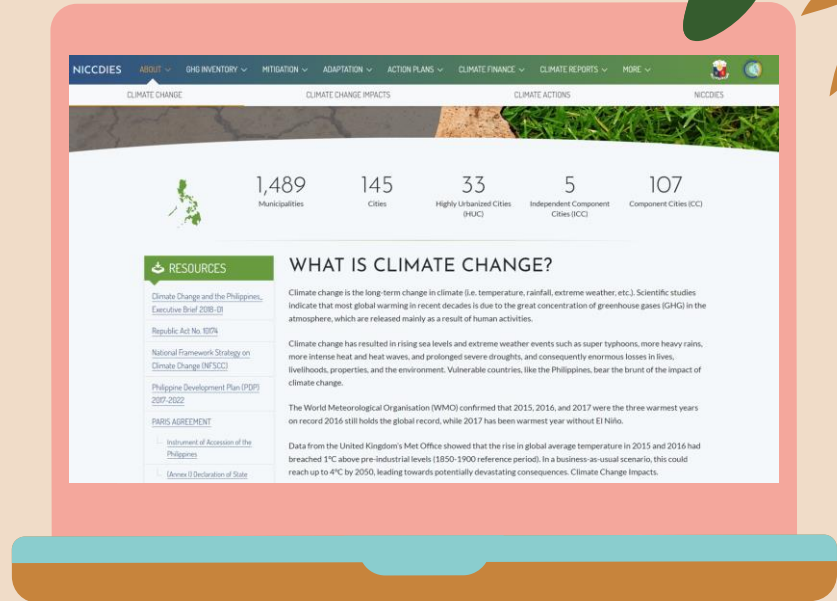


MALACAÑAN PALACE
MANILA

BY THE PRESIDENT OF THE PHILIPPINES

EXECUTIVE ORDER NO. 174

INSTITUTIONALIZING THE PHILIPPINE GREENHOUSE GAS INVENTORY
MANAGEMENT AND REPORTING SYSTEM



NATIONAL INTEGRATED CLIMATE CHANGE DATABASE AND INFORMATION EXCHANGE SYSTEM

ABOUT ▾ GHG INVENTORY ▾ MITIGATION ▾ ADAPTATION ▾ ACTION PLANS ▾ CLIMATE FINANCE ▾ CLIMATE REPORTS ▾ MORE ▾



OVERVIEW

NATIONAL

LOCAL

PRIVATE SECTOR

© Foto-Rabe, pixabay

RESOURCES

[Executive Order 174: Institutionalizing the Philippine GHG Inventory Management and Reporting System \(PGHGIMRS\)](#)

[Philippine Greenhouse Gas Inventory Management and Reporting System \(PGHGIMRS\) Briefer](#)

[Intergovernmental Panel on Climate Change](#)

PRIVATE SECTOR

The Climate Change Commission (CCC) has engaged the private sector in the various activities, with the support of the Low Emission Capacity Building (LECB PHL) Project. The private sector is represented in the: (1) National Steering Committee which acts as the Project Board that provides overall guidance and direction in implementing the project; (2) in the Core Technical Working Group (TWG); and, (3) in the sectoral TWGs established in the different focus sectors of agriculture, waste, industry, transport, forestry and energy (AWIT-FE). The government also partnered with the business sector and enhanced synergies through the annual Business Summits which began in 2013 and has now expanded to include regional Summits starting 2017, with the objective of engage the private sector in climate change adaptation and mitigation activities.

To develop long-term comprehensive climate change strategies with the private sector, private/business sector leaders and partners are encouraged to set corporate-wide greenhouse gas (GHG) reduction goal and inventory their



REPUBLIC OF THE PHILIPPINES
DEPARTMENT OF ENVIRONMENT AND NATURAL RESOURCES
ENVIRONMENTAL MANAGEMENT BUREAU



Environmental Statistics

GAD Corner

News Archive

Sylvatrop Website



Air Quality Management Data



Water Quality Management Data



Solid Waste Management Data



Chemical Management Data



Hazardous Waste Management Data



Environmental Impact Assessment Data



Environmental Laboratories



Status of Applications

DENR-EMB
Website

REGISTERED HAZARDOUS WASTE GENERATORS (HWGs)

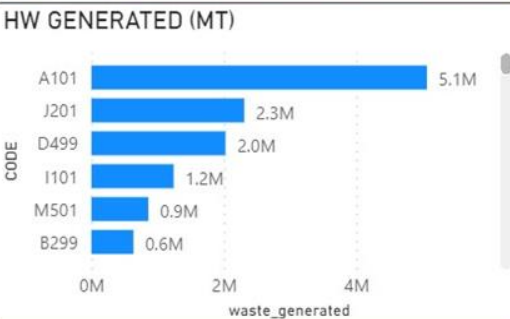
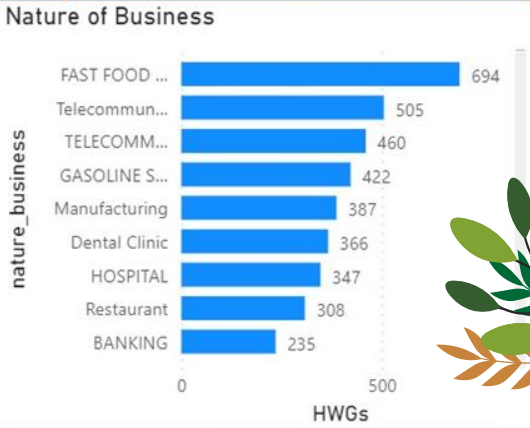
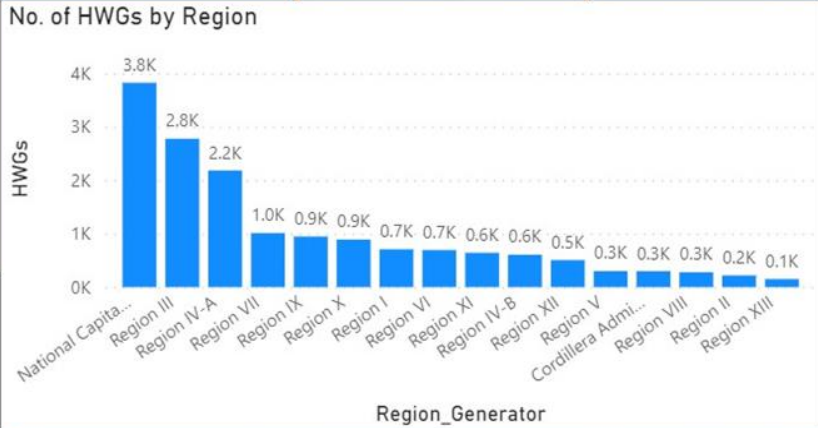


Region:

Date Approved:

HW Code:

16.005K
No. of HWGs



13.76M
GENERATED (MT)

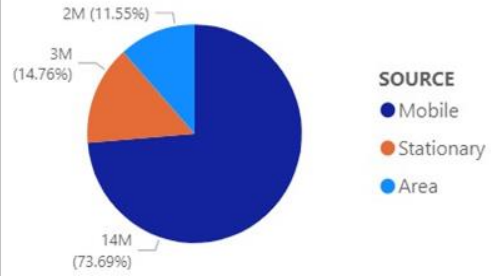
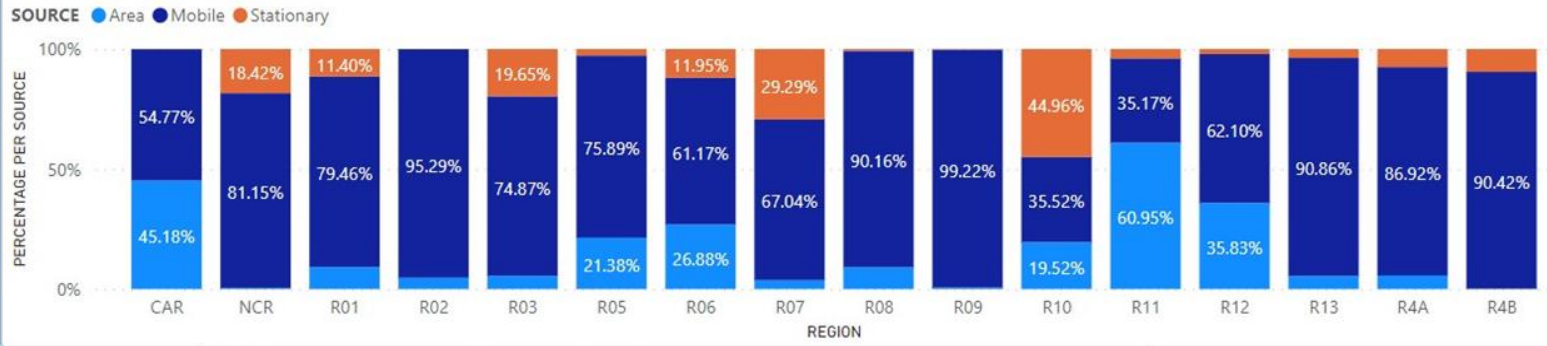
Region	Nature of Business	Nature	HW Code	Details	Sub
Cordillera Administrative Region	Copper Ore Mining	Solid	A101	Granules / pellets (old stock)	NEV
Cordillera Administrative Region	EDUCATIONAL INSTITUTION	Solid	A101	Waste containing cyanide with concentration > 70mg/L in liquid waste	NEV
Cordillera Administrative Region	IMPORTER/ DISTRIBUTOR	Solid	A101	Dust/Soil with cyanide	NEV
Cordillera Administrative Region	Mining	Sludge	A101	Slurry contaminated with Sodium Cyanide	NEV
Cordillera Administrative Region	Mining	Sludge	A101	Wastes with Cyanide; Mill Tailings	NEV
Cordillera Administrative Region	Mining industry		A101	Waste	
Cordillera Administrative Region	Ore Mining	Sludge	A101	ore	

Haz Waste Generators

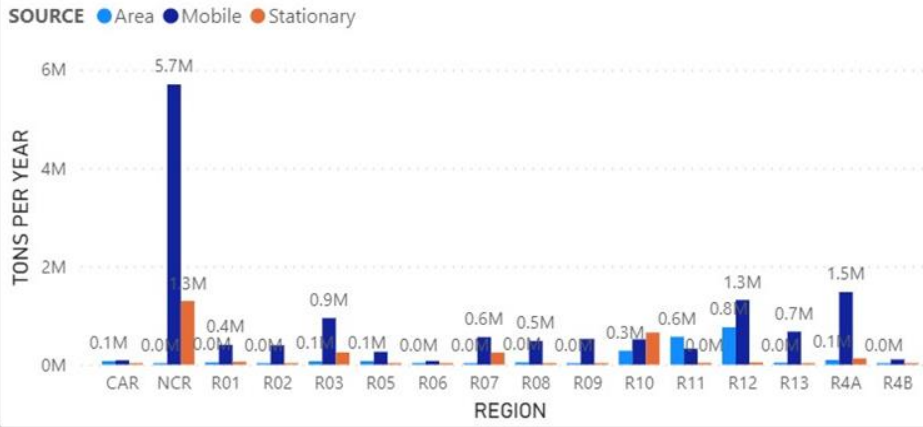
2018 EMISSION INVENTORY

The Environmental Management Bureau (EMB) is required under RA 8749 to conduct an inventory of emissions once every three years. Emissions inventory estimates emissions coming from

PERCENTAGE BY SOURCE



TONS PER YEAR by REGION and SOURCE



SOURCE BY REGION



TONS PER YEAR by PARAMETER

REGISTERED HAZARDOUS WASTE GENERATORS (HWGs)



Region

All

Date Approved

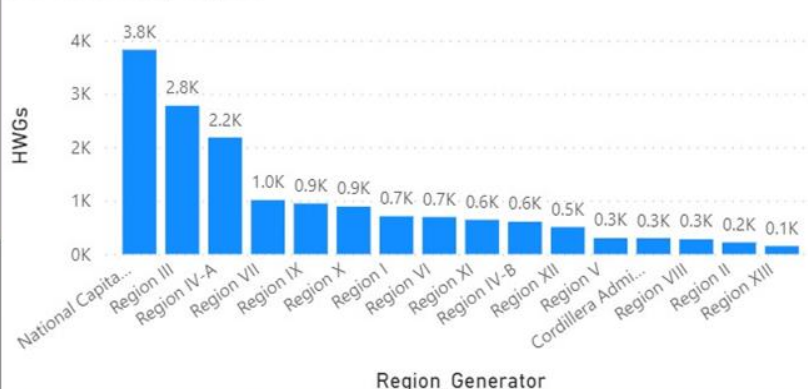
6/9/2020 3/2/2022

HW Code

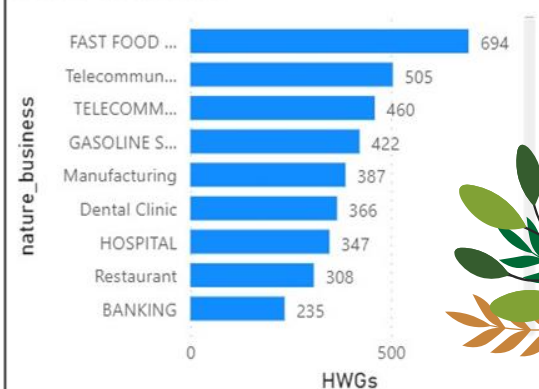
All

16.005K
No. of HWGs

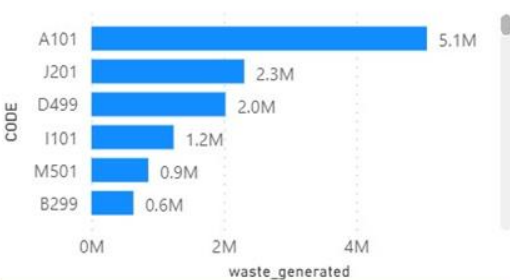
No. of HWGs by Region



Nature of Business



HW GENERATED (MT)



13.76M
GENERATED (MT)

Region	Nature of Business	Nature	HW Code	Details	Sub
Cordillera Administrative Region	Copper Ore Mining	Solid	A101	Granules / pellets (old stock)	NEV
Cordillera Administrative Region	EDUCATIONAL INSTITUTION	Solid	A101	Waste containing cyanide with concentration > 70mg/L in liquid waste	NEV
Cordillera Administrative Region	IMPORTER/ DISTRIBUTOR	Solid	A101	Dust/Soil with cyanide	NEV
Cordillera Administrative Region	Mining	Sludge	A101	Slurry contaminated with Sodium Cyanide	NEV
Cordillera Administrative Region	Mining	Sludge	A101	Wastes with Cyanide; Mill Tailings	NEV
Cordillera Administrative Region	Mining industry		A101	Wastes with cyanide is in the form of tailings.	NEV
Cordillera Administrative Region	Ore Mining	Sludge	A101	ore tailings with cyanide	NEV



Home > Asia and Pacific

Share



Asia and Pacific

Contact Us

Countries | Schools | Measurements - Last 7 Days

Asia and Pacific

About & Contacts

How to implement GLOBE in times of COVID-19

Countries

News

Events

GLOBE Equipment Suppliers

Collaborating Organizations

Documents

19 Countries

- Australia
- Bangladesh
- Bhutan
- Fiji
- India
- Japan
- Maldives
- Marshall Islands
- Micronesia
- Mongolia

Map labels: Turkmenistan, Kyrgyzstan, China, South Korea, Japan, Sea of Japan, East China Sea, Philippines Sea, Philippines, South China Sea, Vietnam, Thailand, Myanmar (Burma), Malaysia, Indonesia, Papua New Guinea, Arafura Sea, Banda Sea, Oman, Iran, Afghanistan, Pakistan, Nepal, India, Bay of Bengal, Arabian Sea, Laccadive Sea, Gulf of Thailand, Vietnam, Philippines, Malaysia, Indonesia, Papua New Guinea, Arafura Sea, Banda Sea.

Map data ©2022 Google, INEGI



Protocol Layers

Solar Noon Temperature Dailies

Contours

Contour Layer Opacity

Choose sphere to explore protocols

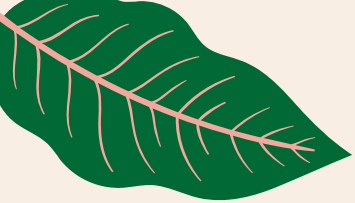
- Atmosphere >
- Biosphere >
- Hydrosphere >
- Pedosphere (Soil) >
Soil Temperature and Moisture
- Pedosphere (Soil) >
Soil Characterization

2022-02-27



Sites on Map: 164

5000 km



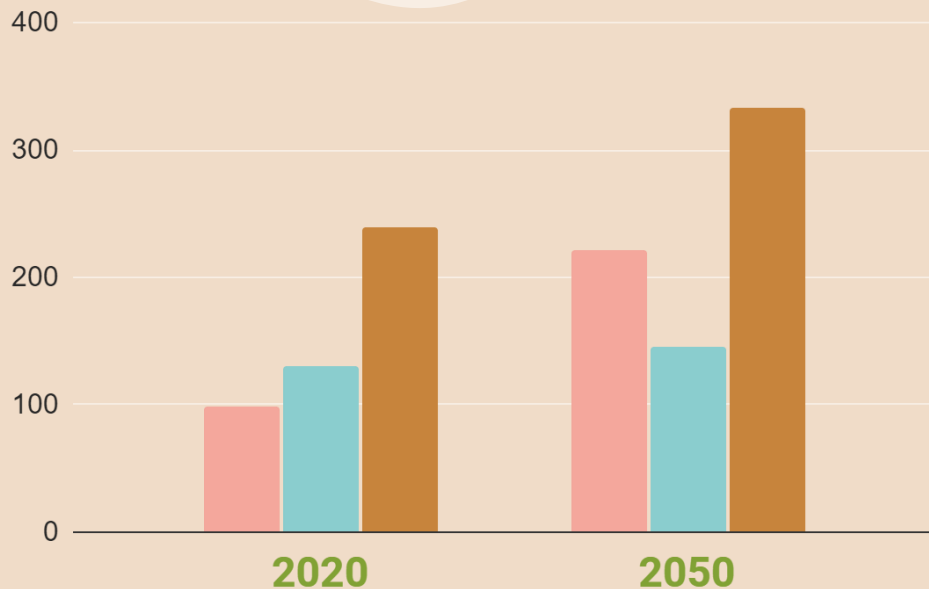
04 Data Ecosystem

60%

35%

45%

Developing an ecosystem for environmental data



Rethinking Reporting

Not just based on **what kind of pollution** is to be monitored

Envtl
Monitoring
Envtl
Accounting



but also the **new kinds**
of **skill sets** needed

Data
Science

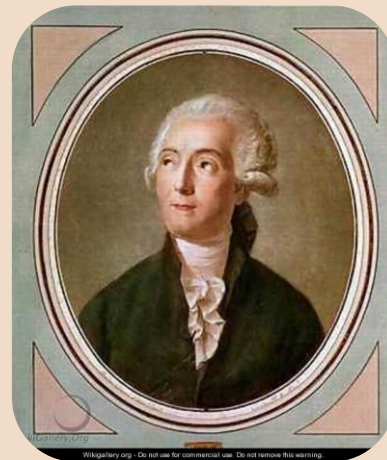
Info
Management

Back to
(mass)
Balancing

— NOTHING —
IS LOST
— NOTHING —
IS CREATED
EVERYTHING
IS
TRANSFORMED



Antoine Lavoisier



ありがとうございました。

චන්ද්‍රා ජයවර්ධන

Do you have any questions?

Melissa May F. Cardenas
mel.cardenas@environweave.com

+63 2 8921-1707

+81 3 4578-0135



CREDITS: This presentation template was created by **Slidesgo**, including icons by **Flaticon** and infographics & images by **Freepik** and illustrations by **Storyset**



AGENDA

March 4, 2022/ Friday 9:30 am PH

01

Opening

Opening Remarks
Objectives of the WS
Introduction of
Participants

02

Plan for Pilot Project 2022

Data for GHG
Inventory 2020
Insights from
Sectoral Interviews
Q&A

03

Public-Private Sector Dialogue

Panel Discussion:
What factors or
elements would
enable a functional
facility-level MRV?

04

Closing

Overview of the
Pilot Project
Q&A
Closing Remarks



Public - Private Sector Dialogue

Capacity Building on MEASUREMENT, REPORTING & VERIFICATION (MRV)
of Climate Change Mitigation - Phase 2

as part of
Philippine-Japan Environmental Week
<https://www.jparsi.go.jp/ew2022ph>

PANELISTS

**Ms. Gretchen
Fontejon-Enarle**



Pollution Control Association of
the Philippines, Inc. (PCAPI)



**Engr. Cesar
Luis Lim**

Phil Society of Ventilating, Air Conditioning,
and Refrigerating Engineers (PSVARE)

Engr. Jeffrey Mijares



Samahan sa Pilipinas ng mga
Industriyang Kimika (SPIK)



Mr. Rolando Abad, Jr.

Climate Change Information and
Technical Support Division
Climate Change Service, DENR

Engr. Voltaire Acosta

UN HABITAT
FOR A BETTER URBAN FUTURE

AGENDA

March 4, 2022/ Friday 9:30 am PH

01

Opening

Opening Remarks
Objectives of the WS
Introduction of Participants

02

Plan for Pilot Project 2022

Data for GHG Inventory 2020
Insights from Sectoral Interviews
Q&A

03

Public-Private Sector Dialogue

Panel Discussion:
What factors or elements would enable a functional facility-level MRV?

04

Closing

Overview of the Pilot Project
Q&A
Closing Remarks



Public - Private Sector Dialogue

Capacity Building on MEASUREMENT, REPORTING & VERIFICATION (MRV) of Climate Change Mitigation - Phase 2

as part of
Philippine-Japan Environmental Week
<https://www.jparsi.go.jp/ew2022ph>

Overview of the Pilot Project

**Mr. Riki
NAKAJIMA**

Overseas
Environmental
Cooperation Center



Outline of the Pilot Project under PaSTI

Riki Nakajima

Researcher, Overseas Environmental Cooperation Center, Japan

4 March 2022



The purpose of the pilot project is to ...

- Facilitate the conduction of **bottom-up** transparency activities with the **involvement of the private sector**,
- Produce **robust GHG accounting** and **consistent with key international standards** (IPCC, GHG Protocol etc.),
- Be **flexible** to sector specific needs and national circumstances,
- Provide **practical suggestions** for policy makers and GHG reporting entities.

The outline of the pilot project

- **Estimated activity period**
Summer 2022
- **Methodologies (TBD)**
sector, scope, accounting GHG emissions
- **Reporting process (TBD)**
- **Useful tools**
reporting formats, online workshops

The outline of the pilot project

- **Estimated activity period**
Summer 2022

- **Methodologies (TBD)**
sector, scope, accounting GHG emissions

- **Reporting process (TBD)**

- **Useful tools**
reporting formats, online workshops

Conclusions and suggestions of today's panel discussion and other ideas obtained from Key-informant interviews and desktop study will be taken into consideration.

Thank you for your attention!



The PaSTI Secretariat

Email: pasti-sec@oecc.or.jp

WEB: <https://www.oecc.or.jp/en/pasti/index.html>



Wrap-up of the PaSTI WS

CLOSING REMARKS





THANKS

pasti-sec@oecc.or.jp

Visit our website

<https://bit.ly/PaSTIWebsite>

Visit our YouTube Channel

<https://bit.ly/PaSTIYouTube>

CREDITS: This presentation template was created by **Slidesgo**, including icons by **Flaticon** and infographics & images by **Freepik**

