



Good food, Good life

Kasambuhay for good for planet and people





KASAMBUHAY
—FOR— *Good*

Our Purpose

We unlock the power of food to enhance quality of life for everyone, today and for generations to come.

**Creating Shared Value
in the Philippines**



NESTLÉ'S NET ZERO ROADMAP

Our path to regeneration for future generations

Solving the problem means identifying the problem. We found Nestlé emitted 92 million tonnes of greenhouse gas emissions in 2018*. Now we know the extent, we know the road ahead.

*Total GHG emissions were 113 million tonnes (CO₂ equivalent) in 2018, 92 of which are in scope of our UN 1.5°C pledge.

Companies and their emissions grow over time. That's why we're promising to be net zero based on our 2018 baseline, no matter how much our company grows.

— Path to zero emissions by 2050
- - Business as usual

Emissions by operation
(million tonnes of CO₂e, 2018)

65.6	Sourcing our ingredients
7.0	Manufacturing our products
11.0	Packaging our products
7.5	Managing logistics
0.8	Travel and employee commuting

Moving faster

We're excited to hit the soil running. We're accelerating our work in manufacturing, packaging and carbon-neutral brands. We're also investing CHF 1.2 billion to help spark regenerative agriculture across our supply chain, as part of a total investment of CHF 3.2 billion by 2025.

Our milestones

- 100% deforestation free for primary supply chain by 2022
- Switch our global car fleet to lower emission options by 2022
- 100% certified sustainable palm oil by 2022
- 100% renewable electricity in all our sites by 2025
- We expect 95% of our packaging to be recyclable or reusable by 2025 but remain committed to 100%
- 100% certified sustainable cocoa and coffee by 2025
- Source 20% of key ingredients through regenerative agricultural methods by 2025
- Cut virgin plastic in our packaging by a third by 2025
- Plant 20 million trees a year
- Nestlé Waters becomes carbon neutral by 2025

By 2025, we will reduce our emissions by 20%

Scaling up

Further down the greener path, we will invest in new technologies and fundamental changes to our products and businesses around the globe.

- Use more renewable thermal energy in our manufacturing
- Source 50% of key ingredients through regenerative agricultural methods by 2030
- Plant 200 million trees by 2030

By 2030, we will reduce our emissions by 50%

Delivering our promise

Advanced agricultural techniques will deliver a regenerative food system at scale, supported by zero emission logistics and company operations. We will balance any remaining emissions through high-quality natural climate solutions that benefit people and the planet.

By 2050, we will reach

net zero

2018

2021

2025

2030

2050

Nestlé PH pioneering initiatives are geared towards mitigating the impacts of climate change and fulfilling our net zero commitment.



Plastic Collection & Diversion



Packaging Innovation



Renewable Electricity

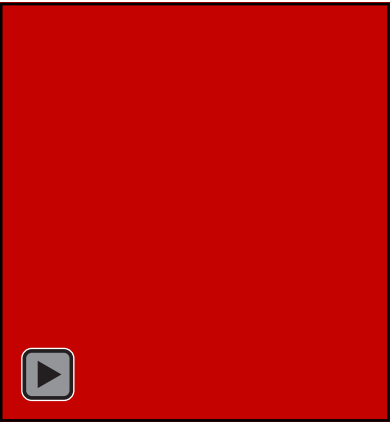


Social Behavior Change



Regenerative Agriculture

We play a leading role in tackling plastic waste through packaging innovations.



Fit for Purpose



Lighter color



Designed for Recycling



Stretch film elimination



Switch to Paper bands

Your favorite brands are now produced with 100% renewable electricity.

Angat para sa Kalikasan!

 Gumagamit ng 100% renewable electricity



STRICTLY FOR HEALTHCARE PR



100% Renewable Electricity

- **100% renewable electricity** across all sites, achieving our commitment 2 years ahead of target.
- **1st large scale company** under Green Energy Option to power facilities in Mindanao with renewable electricity.

2024 GHG Reduction Projects

- **Boiler Condensing Economizer**



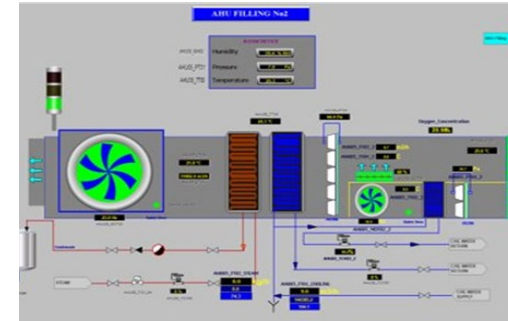
Heat Recovery flue gas

- **MILO Band Dryer Vacuum Improvement**



Vacuum System Improvement.

- **High Efficiency Air Conditioning**



Wet & Dry Air Handling System

- **Biomass Boiler**



Shift to Biomass Fuel

- **Shift to Electric Air Heater**



Maximize use of Renewable Electricity

- **Digitalization in Industrial Services**



Project Horizon, DMO Energy and JARV-IS GHG

Expanding our initiatives to supply chain



825/15

