

Realizing SDGs through the fusion of knowledge

About Us About Products

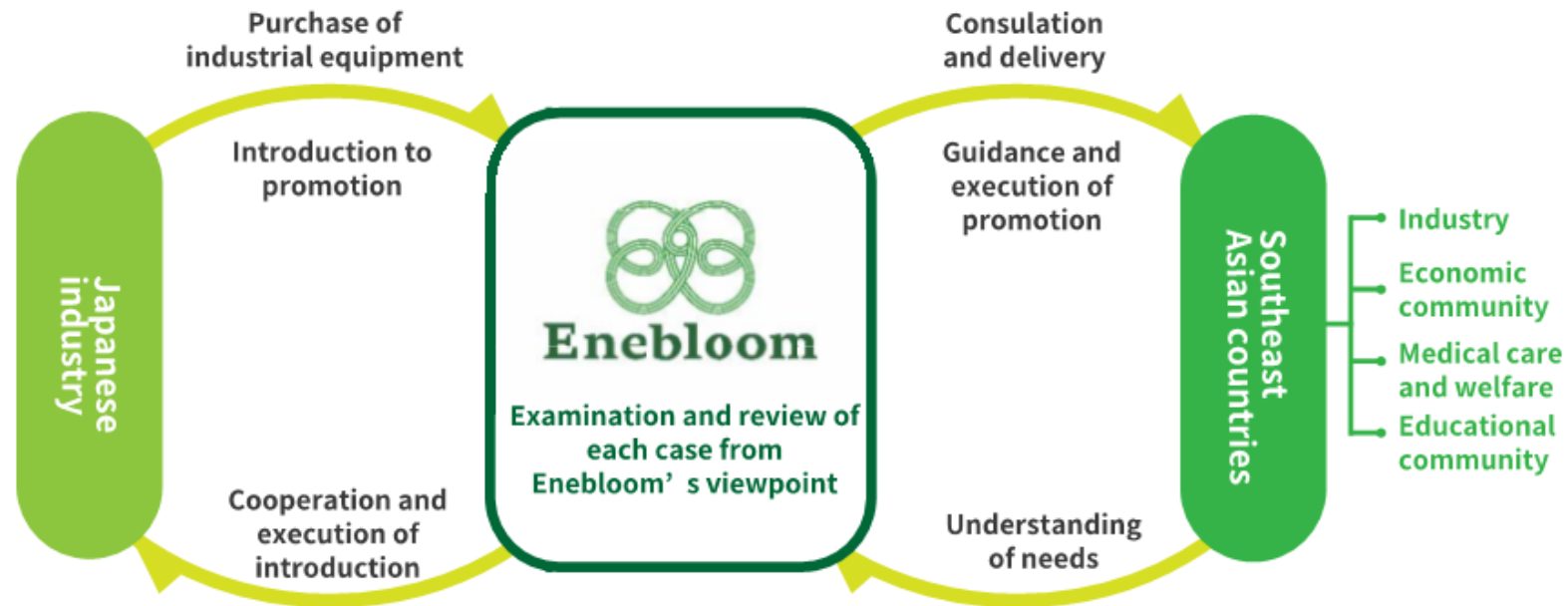
Connecting Southeast Asia and Japan through the Energy of Thoughts



Business Vision

We deliver superior products of high quality to Southeast Asia.

Japan has many excellent products of industrial equipment.
They are products of superior quality, superior SDGs, and low environmental impact.
Such equipment and machines are essential for the future development of the industry in Southeast Asian countries.
Enebloom selects Japanese products that are truly suitable for Southeast Asian countries,
and further selects and delivers only the best products suitable for each specific country.



Export of industrial products

Products and Services for SDGs Society.

No chemicals are used, and none are harmful to the human body or the environment.
Therefore, it is a practical product with low environmental impact
and friendly to both the machine and the environment. So it is easy to maintain and lasts for a long time.

< Products >

1. Cooling pipe cleaning system
2. Cooling tower descaling system
3. Heat exchanger ball cleaning system
4. UV-LED sterilization equipment
5. Energy-saving boilers/pumps/compressors

Cooling pipe cleaning system for molding

No chemicals are used and electrolyzed water is used for cleaning,
so it is safe and secure, and has low running cost!
We are confident of the cleaning effect!

This device uses a proprietary electrolysis technology to generate molecular clusters of water to clean cooling pipes and other equipment.
It can be used not only for molds, but also for cleaning water pipes of under-hoppers of injection molding machines,
oil coolers, temperature controllers, chillers, etc.

► Product overview

The system generates molecular clusters of water (activated water) using own proprietary electrolysis technology and performs cleaning of cooling pipes, etc. using activated water with citric acid added (700-900g).

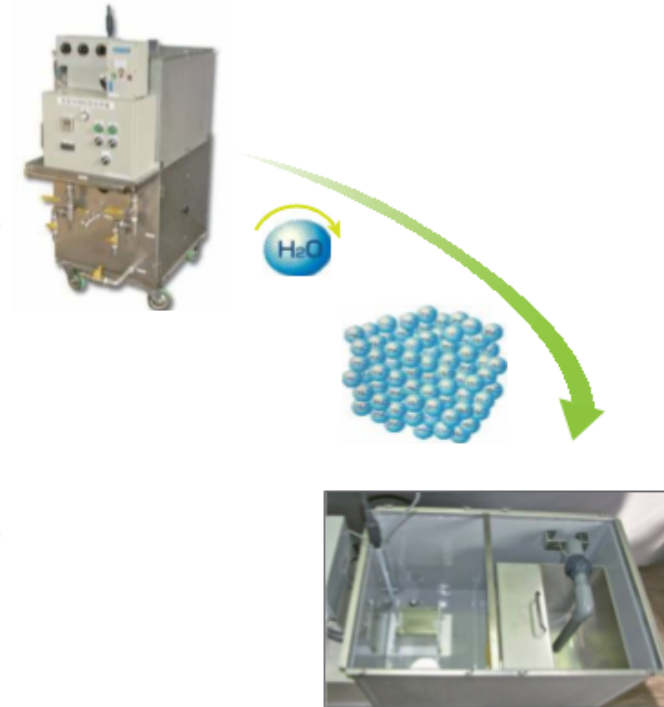
► Features

It can be used not only for mold cleaning but also for water pipe cleaning in molding machine' s under-hopper areas, oil coolers, temperature controllers, chillers, etc.

- The embedded flowmeter allows the user to check the flow rate at the beginning of cleaning and any increase in the flow rate during and after the cleaning.
- The caster wheels allow for easy mobility.

► Effect

Increased productivity. After 6 hours of mold water tube cleaning, the time of cooling was reduced from 17 sec to 13 sec (23% improvement).

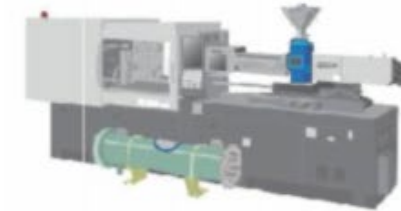
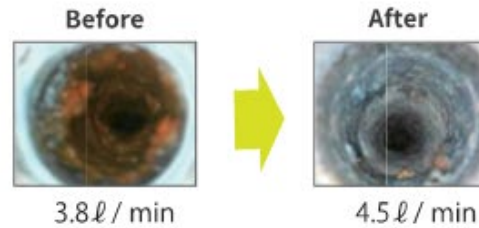


Cooling pipe cleaning system

► Examples of cleaning locations and effects

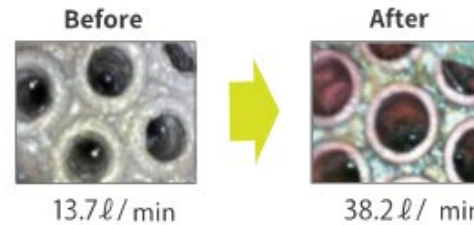
Example of cleaning an under-hopper area

Even though the pipe under the hopper was bent at a right angle, it was possible to remove the rust by cleaning.



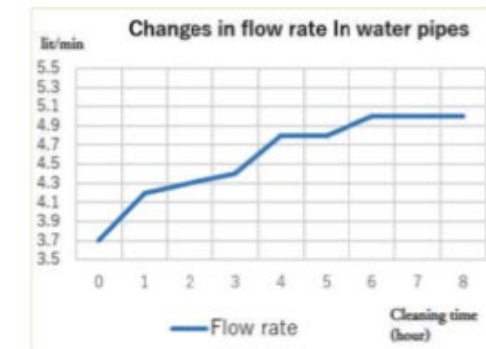
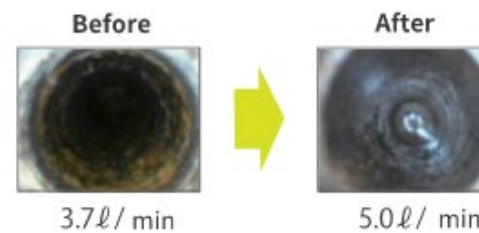
Example of oil cooler cleaning

13.7 lit/min --> 38.2 lit/min
The flow rate increased by 24.5 lit/min after 14 hours of cleaning.



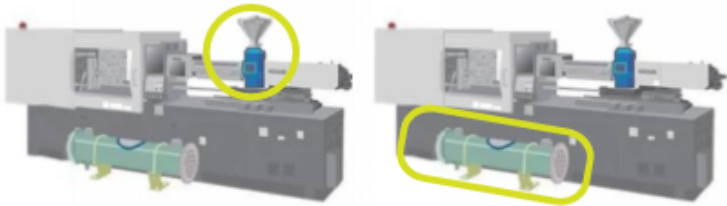
Example of mold water pipe cleaning

Rust bumps are removed.
As can be seen from the graph, the flow rate increased and became stable after 6 hours. Only 6 hours of cleaning is sufficient.



Cooling pipe cleaning system

► Main cleaning points



Under-hopper area, Oil cooler



Mold water pipe

Temperature controller



Air Compressor



Air Dryer



Water Cooled Air Conditioning Unit

FAQ

Q What is the size and weight of the system?

A 91 cm (W) × 53 cm (D) × 128 cm (H)

150 kg without tank water, 230 kg with tank water

Q Can we clean pipes other than mold water pipes?

A You can clean pipes of molds, chillers, heat exchangers, oil coolers, molding machine' s under-hopper areas, temperature controllers, etc

Q Can any water be used for cleaning? How much citric acid do we have to add?

A Any water, such as industrial water or tap water, can be added to the wash tank.

Add 700-900 g of citric acid to an 80-liter tank of water

Q Can we drain the used water as it is?

A You can drain the water as it is, only on one condition that it is diluted by adding citric acid.

Q How long does it take to clean each unit?

A It takes 6 to 8 hours, depending on how clogged the pipes are

Q Is it possible to remove silica and rust clumped together?

A It is possible to remove clumped silica and rust.

Cooling tower descaling system

**Safe and secure because it is cleaned with electrolysis water.
Furthermore, maintenance costs can be significantly reduced.**

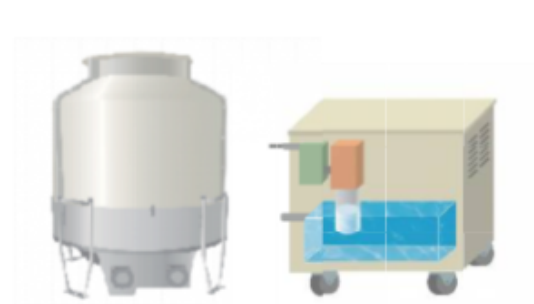
When oxidized water is reduced by electrolysis, the molecular clusters of water are subdivided, increasing its surface area.
This makes it easier to dissolve substances.
This effect is used to remove scale and other contaminants in pipes and heat exchangers.

► Product Overview

This system reduces oxidized water by electrolysis, so that the molecular clusters of water are subdivided. This results in an increase in surface area and makes the substance easier to dissolve. The system utilizes this effect to clean the inside of pipes. It also removes scale and other stains in heat exchangers.

You can check the effects of the system visually, reduce the amount of chemicals used, save a great deal of water, and reduce cooling tower maintenance costs significantly.
As a result, the investment will pay off in a short period of time.

Main Installation Location



Cooling tower

chillers

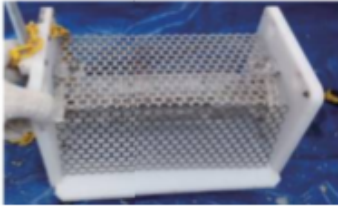
Equipment used (For standard equipment)



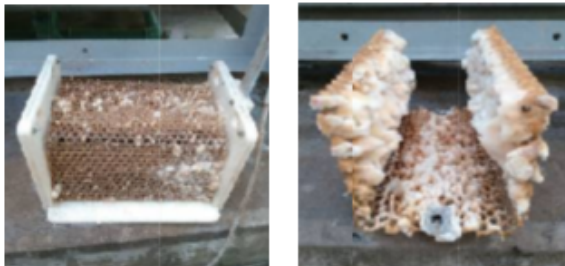
Electrode filter and controller

Cooling tower descaling system

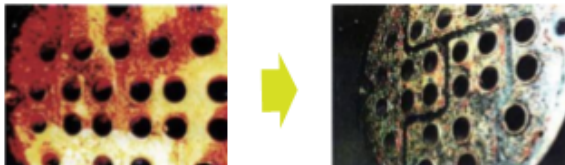
► Example of descaling effect



↓ A month later



You can see that the scale adhering to the inside of the electrode cover has been removed.
(@Pilippines)



Removes red rust and stops the progression of red rust.

FAQ

Q What is the principle behind this system?

A Water is decomposed into hydrogen (H₂) as well as anions (OH⁻) by using high-frequency electrolysis to form antioxidant water, which removes red rust.

Q What differentiates this system from those involving chemical injections?

A Chemicals injected into cooling towers are said to make scale less likely to adhere mainly due to the formation of a film of chemicals. But in reality, scale does adhere. There are also problems with the cost of chemical injection and the environmental impact of wastewater.

Q Is it safe during electrolysis?

A It is safe to put hands in the water during electrolysis. Moreover, the electrolysis does not affect other computer equipment.

Q Can the system recover the scale?

A When the scale is dissolved from the piping into water by electrolysis, the scale adheres to and recrystallizes on the electrode cover, which functions as a negative electrode. This allows scale's recovery.

Q How often should the electrode cover be cleaned?

A It should be cleaned once a month.

Q Is it easy to peel off the scale on the electrode cover?

A It can be easily removed using a spatula.

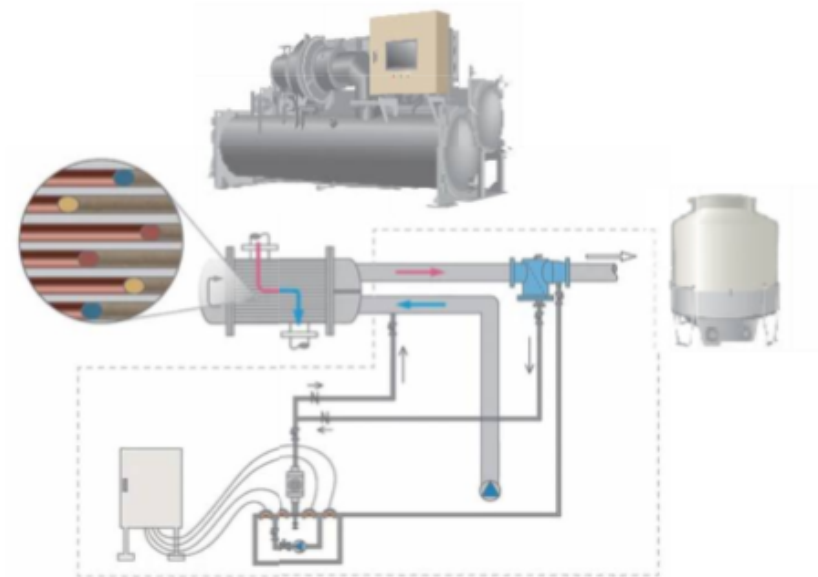
Heat exchanger ball cleaning system

**Cleaning with sponge ball. So it shows high cleaning effect.
And because it is automatic, no maintenance is required!**

How the ball cleaning system works is simple! The system uses sponge balls to physically and automatically clean the equipment, resulting in high cleaning power, energy savings, and extended equipment life.

► Product Overview

The mechanism of the ball cleaning system is simple. The system passes sponge balls through the tubes of a shell-and-tube heat exchanger to physically clean the tubes. The tubes can be cleaned repeatedly while the system is in operation. Therefore, the tubes can always stay clean. As a result, energy savings, extended equipment life, and effective maintenance are expected.



► Features

Automatic cleaning eliminates maintenance effort.

The system prevents adhesion of dirt whenever the target machine is in operation, thereby preventing the deterioration of machine operating efficiency or problems associated with the corrosion of tubes.

Physical cleaning using sponge enables highly effective cleaning.

No environmental impact because no chemicals are used. No equipment damage caused by chemical cleaning.

This prolongs the life of the equipment.

The only maintenance required is the replacement of natural rubber sponge balls. This results in low running costs.

XAC-way : Automatic cleaning

Cleaning balls clean tubes up **without stopping** chillers.

XAC can tube-cleaning everyday, every time.



Your chiller can **constantly** perform well !!

- Conventional way : Manual cleaning

You have to stop your chillers for tube-cleaning.



You can not clean up frequently even if tubes are becoming dirty.



The loss of energy is causing from your chillers!!



You can **always** keep clean them with XAC-way

Energy Saving

The former and latest machinery cleaning always keeps cleaning repeatedly, but it still results in dirt accumulation and low performance while the machine is waiting for the next cleaning. Therefore, XAC installation can cleaned up the heat exchanger automatically while the machine is running. XAC installation can reduce dirt accumulation, low performance, and energy saving.

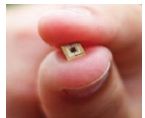







UVLED Sterilizer

From product life to environmental impact, deep UV LEDs offer many advantages



Deep UV LED



Emission wavelength 	Life time ※1 	warm up 	Equipment 	environmental burden 	Stakeholders Impact on Stakeholders
Heat and ozone rays Including	Approx. Around 8,000 hours	5-15 min.	Difficult to miniaturize	High (mercury use)	Relationships .May have a negative impact
Any Single wavelength	10,000~20,000 Hours or more (35,000 hours for DWM) (Low running cost)	Immediate lighting	Miniaturization is possible	Low (mercury-free)	Contribute to building good relationships (Switching from mercury lamps to LEDs is a PR factor)

Adopted in over 8,500* medical facilities in Japan

There is a reason that Aeroclear is used in medical facilities.

High power air disinfection device

Aeroclear specializes in purifying and deodorizing air utilizing deep UV-LED technology developed by medical device manufacturer NIKKISO with a Nobel Prize awarded professor in Physics. Solid evidence has led to it being adopted at more than 8,500 medical institutions. Aeroclear M is a high power model that is particularly suitable for large spaces.

*As of April 30, 2023

Aeroclear is used in various places, such as:

- medical facilities
- airports
- educational institutions
- offices
- reception rooms

Product lineup by flow rate




Product Portfolio

					
Model	PearlAqua Micro™ A	PearlAqua Micro™ B & C	PearlAqua Deca 30C™	DWM Series	PearlAqua Tera™ & Kilo™
Flow Rate	1.2~2.0L/min	1.2~8.0L/min	1~15L/min	50~200L/min	>10,000L/min
Application	Water Dispenser	<ul style="list-style-type: none"> • Water Dispenser • Water Heater 	<ul style="list-style-type: none"> • Residential • Industrial 	<ul style="list-style-type: none"> • Fisheries • Industrial 	<ul style="list-style-type: none"> • Municipal • Process Water

Energy-saving Product Line up In Japan

★Boiler

SAMSOLUTION **SAMSOLUTION BOILER SYSTEM**
For a sustainable future of energy and food **SE Series** 

Made in **JAPAN**
since 1945



★Vacuum Pumps

ORION
冷熱と真空でイノベーション
Innovating with Thermal Control and Vacuum

**Oil-Free Vacuum Pumps
and Vacuum Filter System**



★Air Compressor (Screw Type)

HITACHI OIL-FREE SCREW COMPRESSOR

HITACHI
Inspire the Next

OIL FREE SCREW

SINGLE STAGE / TWO STAGE



★Boiler & Air Compressor (Turbo Type)

Creating Friendly Products for Users and the Environment

IHI Packaged Boiler

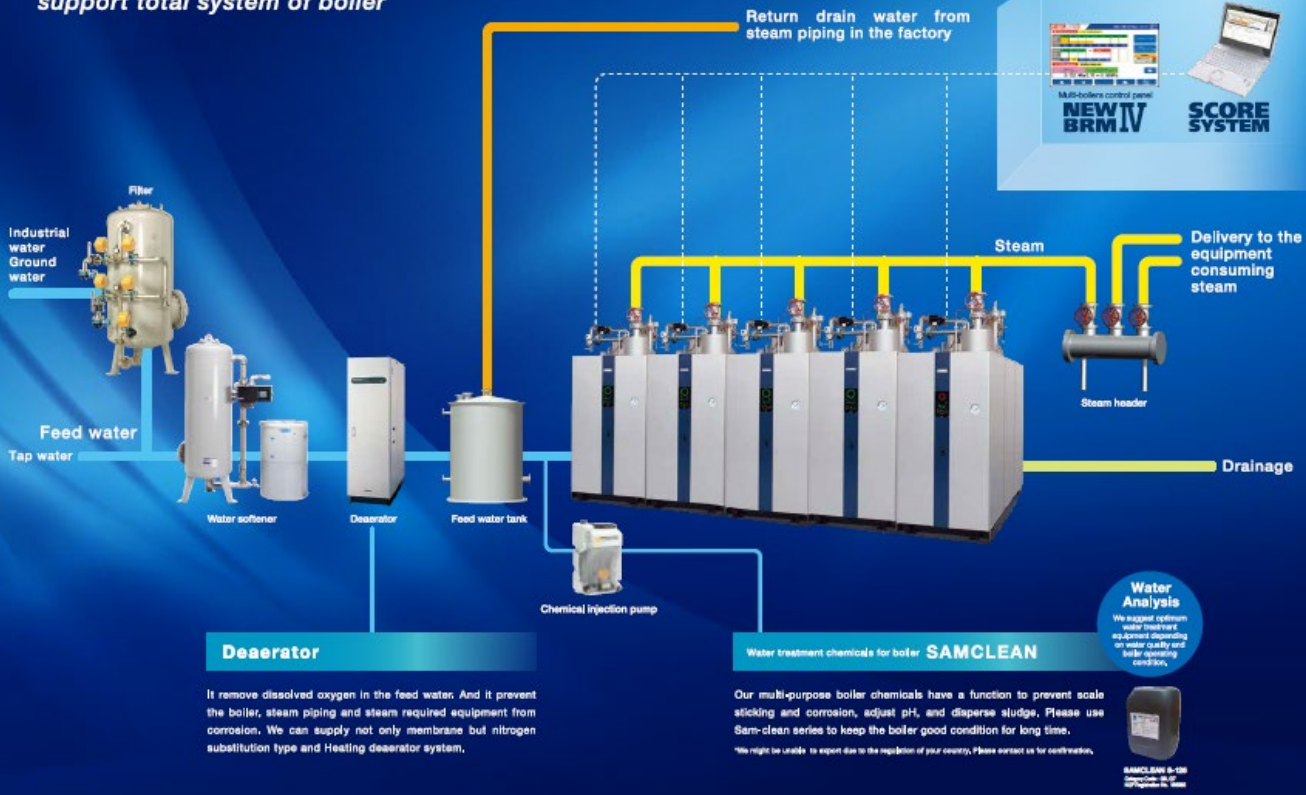
IHI
Realize your dreams



SAMSON Boiler

SYSTEM FLOW

We, SAMSON propose and support total system of boiler



Fuel cost comparison(LPG vs Diesel)

Fuel prices are skyrocketing in the Philippines, especially diesel prices

Fuel cost reduction by using once-through :
Approx. **3,450,000** PHP/year



Calculation conditions:
Steam volume: 2.0t/h, Gas unit price 75PHP/kg
Diesel unit price 80PHP/L
Operation time: 5hours/day, 250days/year,
Boiler efficiency: 90%

*Fuel consumption is catalog value

Saving space by close placement

Efficient space by close placement.
Save more space with big capacity 3t/h boiler.

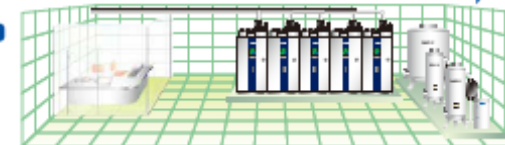
• Saving space close placement

BEFORE
20t/h x 5units



46% space saving
compared to old model.

AFTER
20t/h x 5units



ORION Vaneless Pumps

Inverter Models that Offer Even Higher Energy Savings

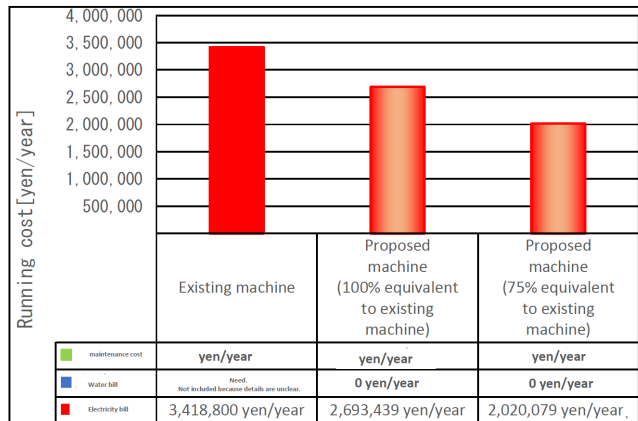
KCE INVERTER MODEL Air-Cooled Series

Introducing the Vastly Improved KCE-F Series
Improved Scalability for Centralized Vacuum Systems



Built-In

eco speed control
Energy saving mechanism that works by automatically adapting motor speed to changes in air consumption.



APPLICATION

ORION Offers Users a Comfortable Vacuum / Blower Environment.

Electronic Parts Factory / Can Manufacturing Factory

Vacuum pumps are used to vacuum-transport ICs to be mounted onto PCBs.
A centralized vacuum system reduces workplace air conditioning loads and also offers effective power savings provided by the inverter, plus multi-unit control.



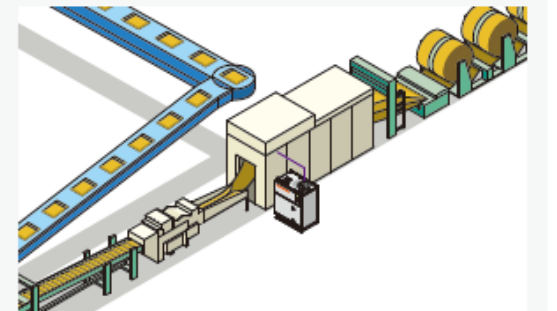
Vacuum Forming Equipment

Forming by vacuum-bonding to the mold.
Improves the working environment by reducing electricity consumption, preventing oil-smoke, and lowering noise levels.



Bag Manufacturing and Paper Processing

Vacuum pump used as a vacuum source for bag manufacturing machines and cardboard punching machines. Energy savings can be achieved by centralizing smaller individual decentralized pumps.



HITACHI Air Compressor 22~240kW

DSP NEXT II series

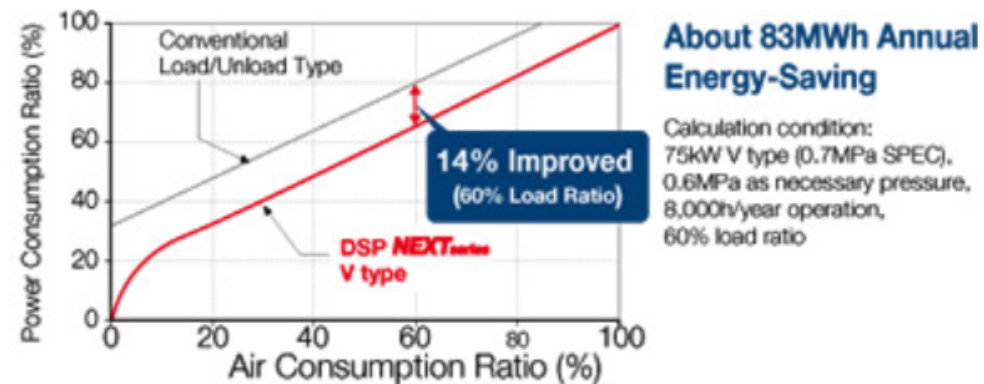
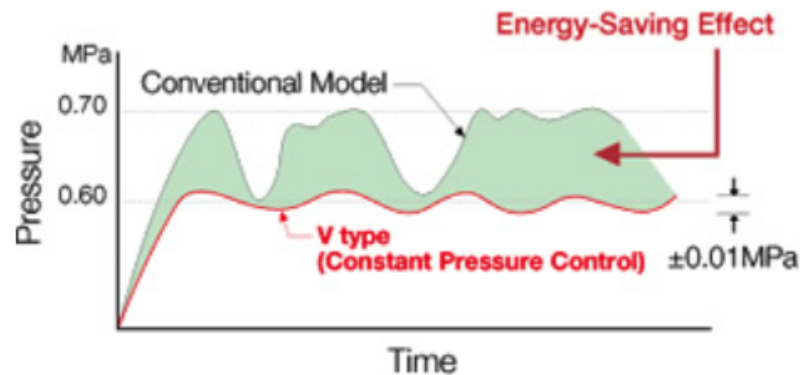
-HITACHI Latest Technology of Oil-free Screw, featured by High-Level of Energy-Saving, Outstanding Reliability, and Easy-To-Use.



Energy-Saving

Constant Pressure Control (V type)

Since Constant Pressure Control allows highly precise pressure control within range of ± 0.01 MPa, supply of compressed air at necessary pressure is possible with high efficiency.

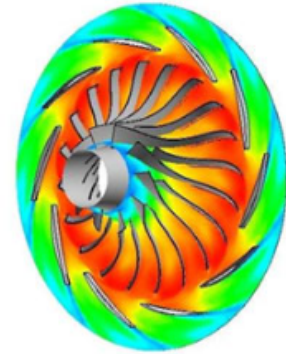
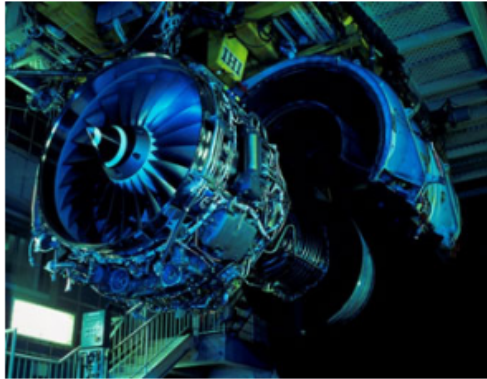


IHI Air Compressor 125~2,000kW

Energy saving by user customization

IHI Rotating Machinery Engineering, as one of the leading rotating machinery manufacturers, is proud to present to you our internationally renowned rotating machinery technologies that has been similarly applied in different fields such as jet engines, turbochargers and compressors.

One of the main feature of IHI centrifugal compressors is "User customization". IHI centrifugal compressor can offer optimal designs to meet the fluctuating air demands of your plant by combining more than 1,500 design of aero parts which is developed using Computational Fluid Dynamics (CFD) methods drawing from IHI's extensive experience. IHI Rotating Machinery Engineering will always offer "your best compression solution".



T2
Range:125-230kW
168-308hp [Learn more](#)



TRA™
Range:180-600kW
241-805hp [Learn more](#)



TRE
Range:300-1060kW
402-1421hp [Learn more](#)



T3
Range:400-1400kW
536-1877hp [Learn more](#)



TRX
Range:710-2000kW
952-2682hp [Learn more](#)

▶About us

Company name	:	Enebloom Inc.
Head office address	:	854-1, Kawamukou-cho, Tsuzuki-ku, Yokohama, Kanagawa,224-0044, Japan
Phone	:	042-771-7454 (Sales Office)
Representative	:	Masayoshi Ito
Business and Intellectual Property Counsel (Japanese Patent Attorney)	:	Kenji Suzuki
Established in	:	Year 2021
Business description	:	Industrial equipment wholesaling, marketing, overseas human resources consultation
Main banks	:	The Bank of Yokohama,Ltd., Yokohama Shinkin Bank

▶Local subsidiary in the Philippines

Company name	:	Enebloom Philippines Inc.
Head office address	:	303 NARRA BLD, 2276 CHINO ROCES AVE. MAKATI CITY,NCR, PHILIPPINE
Phone	:	+63-49-537-9745 (Sales Office) +63-917-175-4646 (Mobile)
Representative	:	Masayoshi Ito
Established in	:	March, 2024
Business description	:	Maintenance service
Main banks	:	BDO Unibank, Inc.

E-mail : info@enebloom.co.jp

<https://www.enebloom.co.jp/en>