



SOWA Lining Pond

# NON-EVAPO SYSTEM



Clean water for your domestic uses.



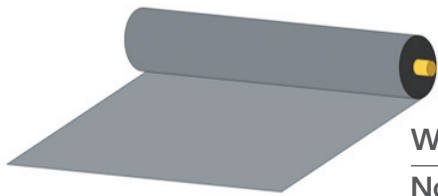
**SHIBATA OGURA**  
**WORLDWIDE ALLIANCE**

# NON-EVAPO SYSTEM

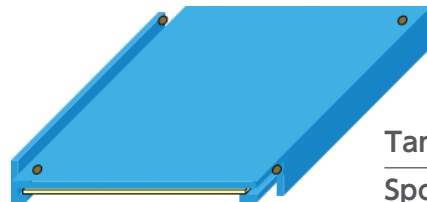
We mostly see ponds in Cambodia just dug only or used with concrete. However, they cannot prevent water from infiltration and evaporation. Since water is important to life even during dry season or drought period, we expect everyone has enough water through our system.

Our SOWA Lining Pond "NON-EVAPO SYSTEM" is consisted of Lining sheet and floating lid.

## MATERIALS



Waterproof sheet  
Non-Woven Fabric



Tarpaulin sheet  
Sponge sheet

Lining sheet prevent the water from infiltrating into the ground.

Floating lid to prevent from evaporation.

## CONSTRUCTION PROCESS



1  
Digging



2  
Lining Fabric



3  
Fabric Completion



4  
Lining Waterproof Sheet



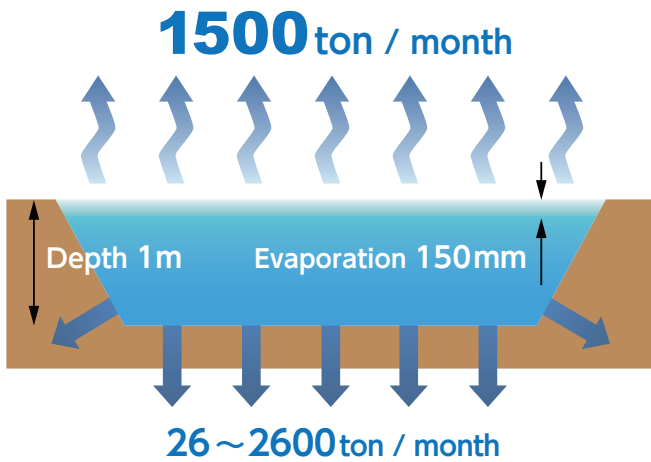
5  
Waterproof Sheet Completion



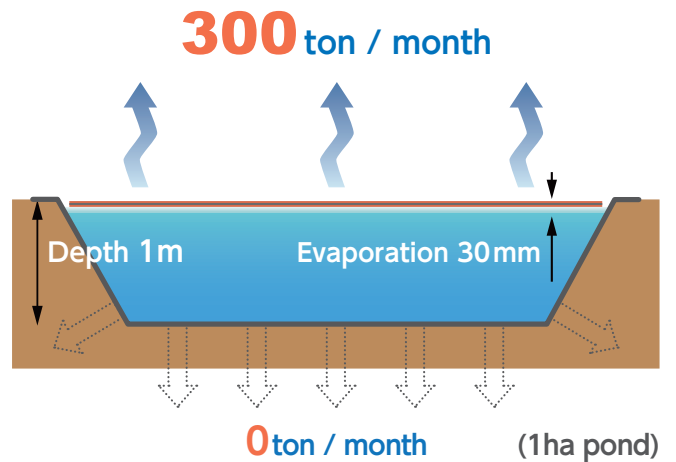
6  
Floating Lid Installation

## COMPARISON

Without NON-EVAPO SYSTEM



With NON-EVAPO SYSTEM



## EFFECT OF FLOATING LID

Our floating lid restrained deterioration of water quality and keep well transparency. Uncovered tank had a sludge in the water.

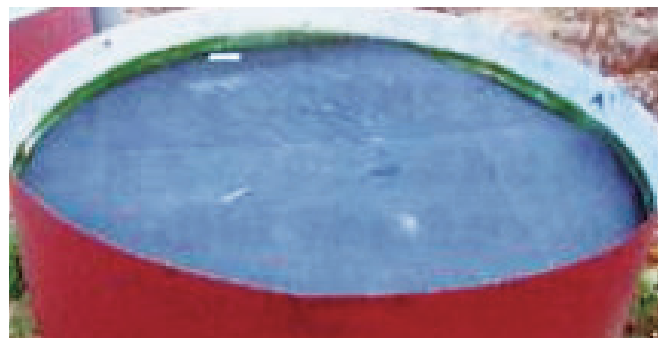
Without floating lid



4months ↓ later



With floating lid



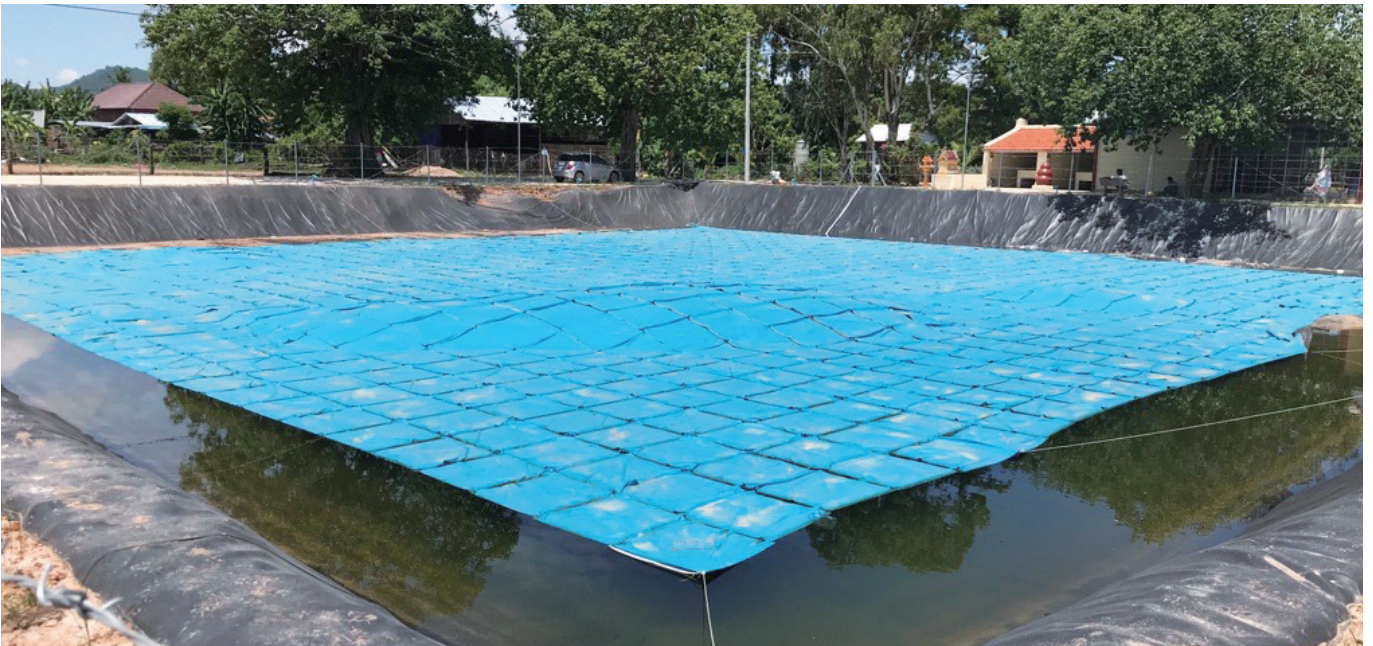
4months ↓ later



## In Takeo Province



## In Kampong Chhnang Province



**SHIBATA OGURA**  
**WORLDWIDE ALLIANCE**

**Shibata Ogura Worldwide Alliance Co., Ltd.**

Address : #09 A1A2,3rd Floor,Street163,Sangkat Tuol Svay Prey1,Khan Chamkar Morn,Phnom Penh,Cambodia

T E L : +855-98-701-129(KH/EN) +855-70-628-777(JP/EN)

M a i l : info@sowakh.com