

Corporate Profile

潤  
い  
あ  
る  
未  
来  
へ

Creating  
the Future of Water

## MISSION STATEMENT

Contribute to Sustainable Society and Community with our Extensive Expertise and Local-oriented Services.

---

### Leading Consultant in the Water Sector

Nihon Suido Consultants (NSC) has been contributing to various business solutions and sustainable growth in the field of water supply and sewerage systems in Japan and over 70 countries as a leading engineering consulting firm since its incorporation in 1959. Our advantage lies in over 60 years of experience and know-how in the water sector to develop local and sustainable solutions.

### Our Mission

As a leading water sector consultant, our mission is to provide sustainable and comprehensive services to a local community by providing effective water and wastewater infrastructure and ensuring its proper maintenance. Furthermore, we believe that it is an important role for us to ensure sustainable takeover, operation and maintenance of infrastructure assets to the next generation.

### Commitment to the SDGs

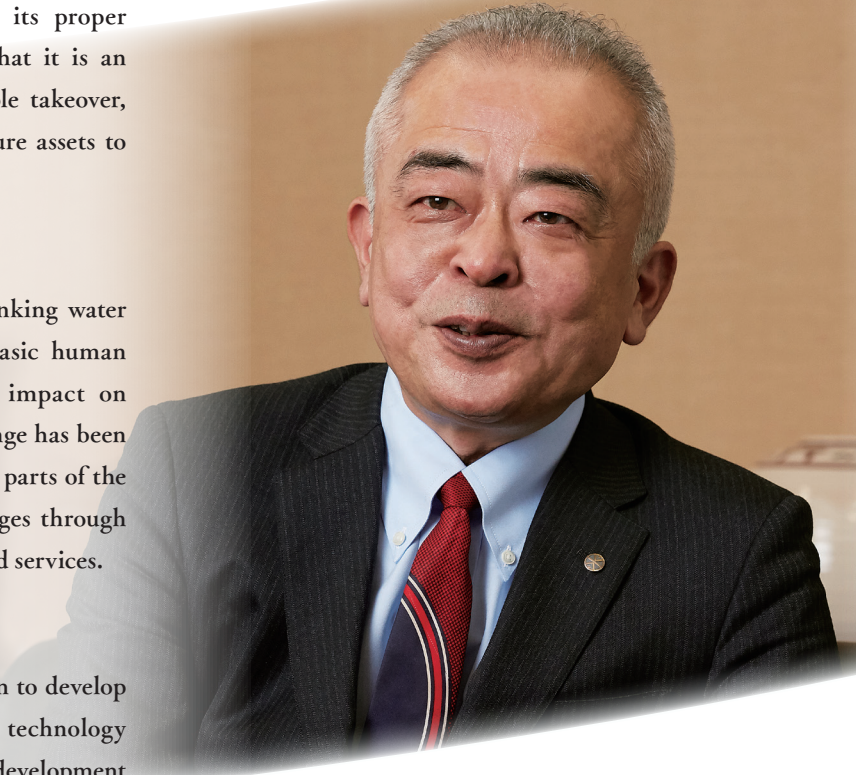
As shown in the SDGs, ensuring safe drinking water and adequate sanitation is one of the basic human needs, provision of which has a great impact on improving the quality of life. Climate change has been exacerbating the natural disasters in many parts of the world. We solve the water related challenges through our technical capabilities and local-oriented services.

### Our Innovation

We have committed to an Open Innovation to develop an innovative solution and digitalized technology through a collaborative research and joint development with partners in the world. We also offer a wide range of engineering solutions as a comprehensive service provider through new business and management models including Design Build and Concession.

I hope that our extensive and comprehensive engineering consulting services can contribute to a sustainable society and community.

Addressing  
Global Water Challenges  
through our Extensive  
Experience and Expertise.



**MAYAMA Kazunori**

President

Nihon Suido Consultants Co., Ltd.

## VISION

### LEAD Public Private Partnership

Develop relationships with water and wastewater utilities based on mutual trust,  
Offer a One-stop Full-service as an expert in the water sector,  
Evolve comprehensive and local-oriented services pertaining to water and wastewater utilities.

### MANAGE Global Water Utilities

Deploy advanced and extensive expertise duly accumulated over a period of time in Japan and over 70 countries,  
Develop high-quality water and sewerage infrastructure around the world,  
Strengthen internal organizational structure and partnership with business partners.

### CHALLENGE New Business Ventures

Promote R&D to develop innovative solutions and digital technologies,  
Work with business partners to develop and sell technologies,  
products and business models.

To achieve our vision, we have committed to undertake "human resources development" through capacity building and training activities duly respecting the diversity of our staff. We have adopted well-planned, long-term programs that enable improvement of human resources in the entire company. We have also created a comfortable workplace that allows the employees to function at their full potential under a secure environment, as well as achieve a proper work-life-balance.

## HISTORY

1959 Incorporation of Nihon Suido Consultants Co., Ltd. in Minato-ku, Tokyo

1962 Establishment of Mission Statement

1963 Relocation of Head office to Shinjuku-ku, Tokyo

1965 Establishment of Group Company: Suikou Service Co., Ltd.

1994 Relocation of Head office to Shinjuku Square Tower, Tokyo  
Opening of Indonesia Representative Office

1998 Certification of ISO 9001 (Quality Management System)

2001 Certification of ISO 14001 (Environmental Management System)

2006 Opening of Korea Representative Office

2007 Opening of Vietnam Representative Office

2009 Certification of ISO 27001 (Information Security Management System)

2011 Establishment of Group Company: NSC Tech Co., Ltd.

2012 PT DACREA Design and Engineering Consultants in Indonesia become our group company  
Establishment of Group Company: Io Co., Ltd.

2013 Sabo Engineering Co., Ltd. become our group company

2014 Opening of India Representative Office

2015 Certification of ISO 55001 (Asset Management System)

2016 Certification of Construction Business License by Tokyo Metropolitan Government

2018 Certification of Construction Business License by Minister of Land, Infrastructure, Transport and Tourism  
Opening of Philippine Branch  
Opening of Singapore Branch

2019 Introduction of ISO Integrated Management System

2021 Opening of China Representative Office

### No.1 Leading Company

NSC is proud to be a pioneer in water consultancy specializing in water supply and sewerage systems since its incorporation in 1959. We are No.1 in sales in our field of expertise in Japan. Besides Japan, we have past and present work experience in over 70 countries all over the globe. We cover all aspects of water infrastructure, including rivers and water environment. We work with ministries, local municipalities, water and wastewater utilities, private companies, and bi-lateral and multi-lateral international funding agencies in Japan and around the world. Over the years, we have earned the respect and trust of our Clients worldwide.

### Our Extensive Expertise

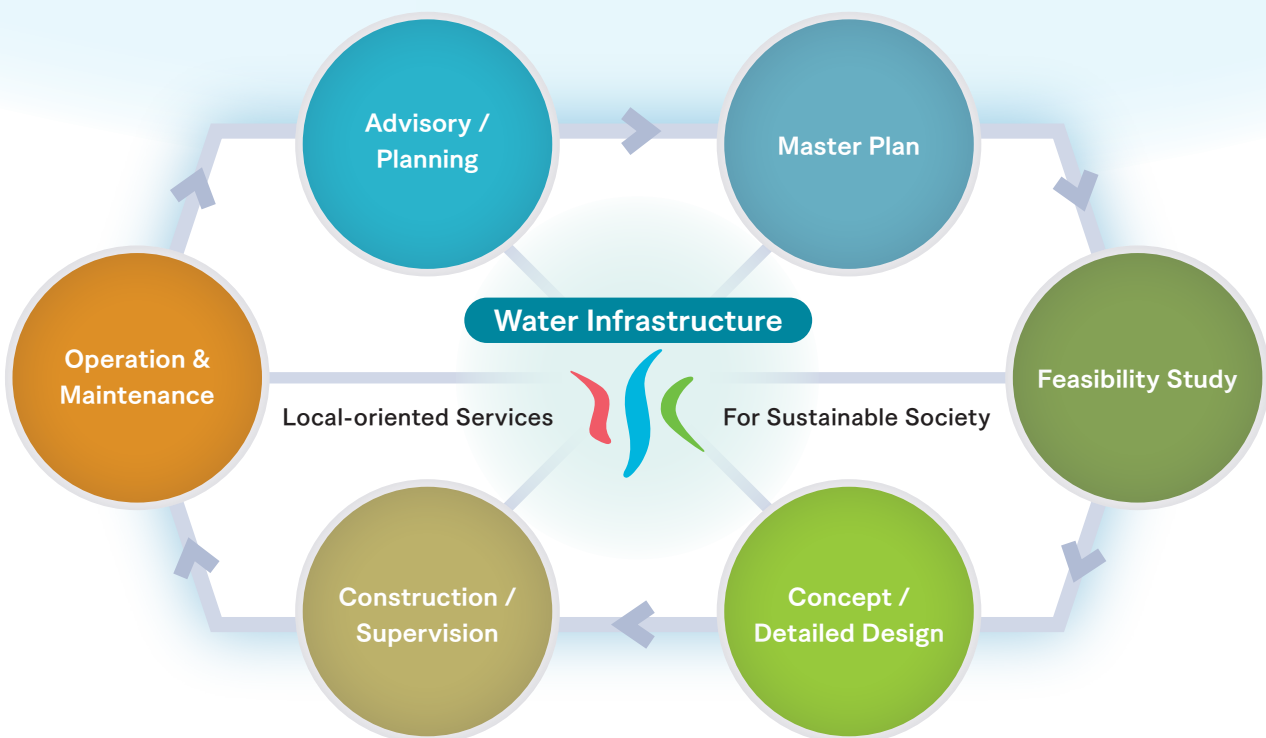
NSC is a consulting firm specializing in the water sector. This is of a great advantage to us as we are able to bring in extensive and comprehensive engineering consulting services on every component of a project life cycle from master plan, feasibility study to concept and detailed design, construction supervision, and operation and maintenance. Most of our projects include a component on capacity building, training and technology transfer. We also provide advisory services on any aspect pertaining to water infrastructure. We provide our services by integrating and utilizing sophisticated knowledge and technologies tailored to give local and sustainable solutions.

### Global Business

We have worked in over 70 countries around the world. We have rendered our consulting services for improvement and augmentation of water supply and sewerage systems in developing countries where people do not have access to safe water and adequate sanitation. We have also provided comprehensive solutions for sustainable management of water and wastewater utilities all over the world. We address the global water related challenges through our extensive expertise and local-oriented services.

### Water for Life

Water is essential for life. Sometimes water causes disasters and accidents, such as floods, droughts, water contamination. NSC contributes to a safe and healthy living environment for many people through our extensive and comprehensive engineering consulting services for water infrastructure. NSC also contribute to a resilient and sustainable society to mitigate the impact of climate change and pandemics.



# As a leading company in the water industry, we evolve local-oriented water service provider and address water

We evolve our consultancy services in survey, planning, design, construction supervision and maintenance of water supply facilities but also in new business and management models such as PPP and DBO as an advisory consultant or primary contractor.

We contribute to sustainable operation and management of water utilities through our extensive expertise.

Master plan and design for water supply facilities including risk management, mitigation and adaptation for climate change, earthquake-resistance, asset management, efficient water treatment, disaster management.

## River

Our extensive expertise in river management covers the entire watershed from water source to estuaries and coastal areas. We use our wide range of advanced skills for flood control, water resources management and water environment conservation.

River infrastructure development projects, including planning and design of river embankment, river front, dam and reservoir, flood and water quality simulation, master plan for water environment conservation, river maintenance planning.

## Water Supply



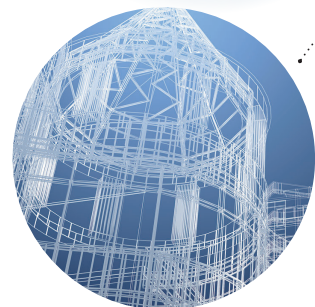
## Environment



## Digital Transformation



## Structural Design



We contribute to develop a low-carbon society through planning and design of waste management and water cycle management.

Survey, planning and design for waste disposal and recycling, sewage sludge management, water quality conservation and renewable energy.

We provide leading cutting-edge consulting services for digital water solutions through our proven information technologies.

Development and operation of digital solutions for efficient, preventive, safe and resilient water management.

Cloud-based asset management system with GIS for water and sewer pipelines [Blitz GIS]

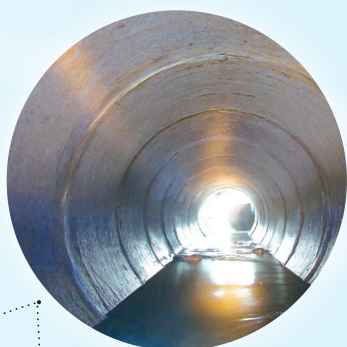
Cloud-based asset management system for water supply and sewerage facilities [Blitz GROW]

# to a comprehensive and related challenges.

We provide sophisticated planning and design of sewerage facilities as well as construction supervision, maintenance, project finance and business management.

We also evolve our consultancy services for new business and management models such as PPP and DBO as an advisory consultant or primary contractor.

Master plan and design for sewerage facilities, including optimization of wastewater treatment process, risk management, mitigation and adaptation for climate change, earthquake-resistance, asset management, runoff and flood analysis, disaster management.



*Sewerage*



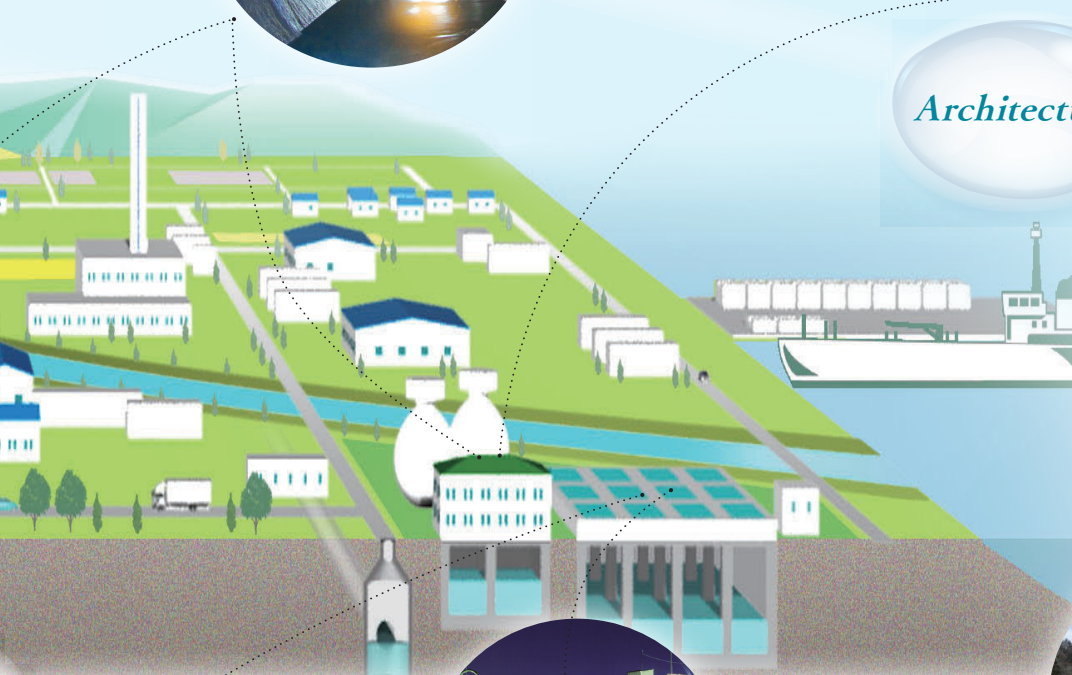
*Overseas*



*Architecture*

We use leading cutting-edge technologies for the infrastructure architectural design in harmony with the local climate, landscape and environment.

Design of a suitable architectural space for water supply and sewerage facilities, analysis/update of architectural functions.



*Machinery,  
Electricity,  
Plant*

We provide an optimized structural design to meet diverse needs based on our extensive experiences, utilizing advanced design technology such as FEM analysis.

Integrated analysis for structures and grounds related to water supply and sewerage facilities, earthquake-resistance analysis and design.

We provide consultancy services for survey, planning and design of mechanical and electrical equipment to meet diverse duties and design lives based on our extensive experience and understanding of equipment performance.

Development of plant systems for water supply and sewerage facilities with disaster prevention, energy saving and renewable energy.



*Construction*

We evolve our consultancy services for new business and management models such as PPP and DBO.

Construction business license for civil engineering works and other 14 industry sectors.

We have been rendering consulting services for water supply and sewerage systems in developing countries.

We also provide comprehensive solutions for the sustainable management of water and wastewater utilities all over the world.

We have branch offices in Philippines and Singapore, and representative offices in Korea, China, Vietnam, Indonesia, and India.

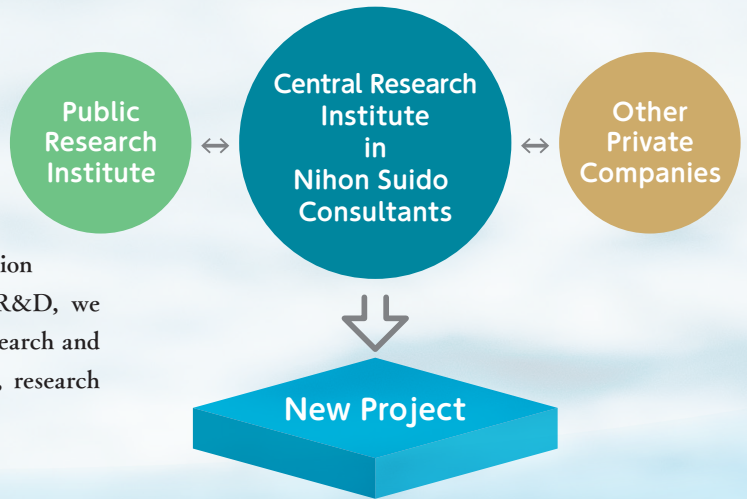
Master plan, feasibility study, concept and detailed design, construction supervision, training for operation and maintenance, technical transfer through Japanese ODA and other international donors.

## Innovation for Water

### Research and Development

The Central Research Institute of NSC leads our Research and Development (R&D) for an innovative solution and digitalized technology. In order to accelerate the R&D, we commit to an Open Innovation through a collaborative research and joint development with domestic and foreign universities, research institutes and other private companies.

NSC invests 1% of the company's annual budget in R&D.



### In-house Training

We conduct seminars and study sessions to deepen and expand the expertise, explore business opportunities and exchange information and ideas.

The main training activities include:

#### World Incubator (WIN) Department

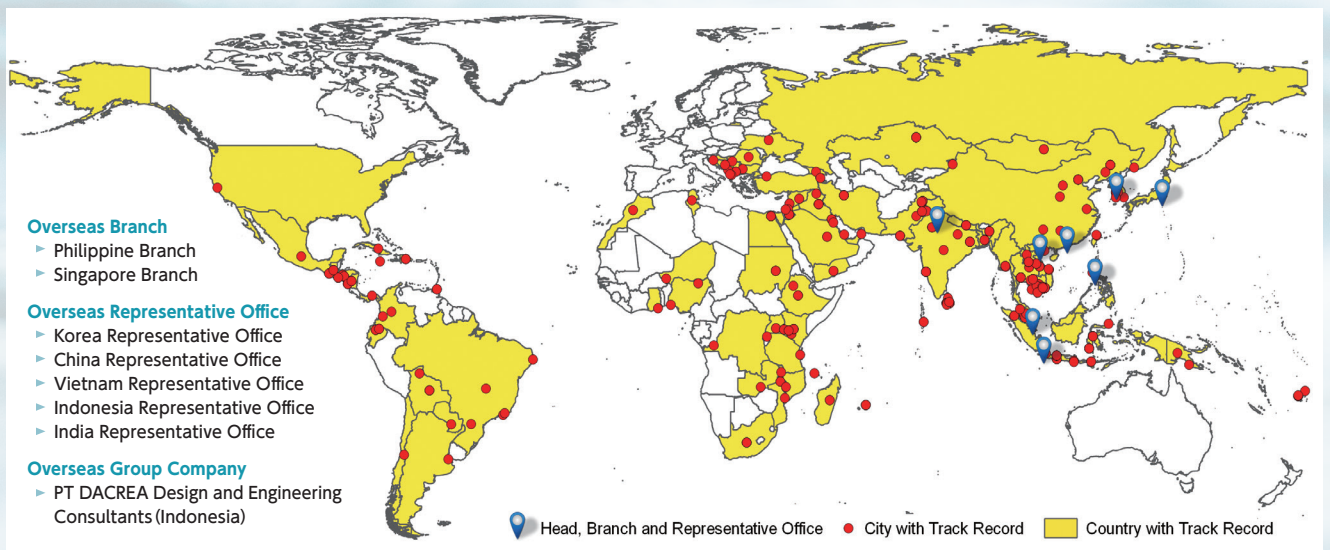
Some young professionals of NSC belong to the WIN Department and attend some seminars, workshops and on-job trainings periodically to enhance their knowledge on international project implementation and their English communication capability.

#### NSC Symposium

The NSC symposium is an annual event with a specific theme to promote better understanding of the company's business, to generate new ideas and to deepen exchanges among employees. Students from universities are also invited to the event.



### Our Presence in the World





Shinjuku Square Tower 6-22-1 Nishi-Shinjuku, Shinjuku-ku,  
Tokyo 163-1122 Japan

TEL +81-3-5323-6200 FAX +81-3-5323-6480

<http://en.nissuicon.co.jp/>

