

Corporate Profile

潤
い
あ
る
未
来
へ

Creating
the Future of Water

MISSION STATEMENT

Contribute to Sustainable Society and Community with our Extensive Expertise and Local-oriented Services.

Leading Consultant in the Water Sector

Nihon Suido Consultants (NSC) has been contributing to various business solutions and sustainable growth in the field of water supply and sewerage systems in Japan and over 70 countries as a leading engineering consulting firm since its incorporation in 1959. Our advantage lies in over 60 years of experience and know-how in the water sector to develop local and sustainable solutions.

Our Mission

As a leading water sector consultant, our mission is to provide sustainable and comprehensive services to a local community by providing effective water and wastewater infrastructure and ensuring its proper maintenance. Furthermore, we believe that it is an important role for us to ensure sustainable takeover, operation and maintenance of infrastructure assets to the next generation.

Commitment to the SDGs

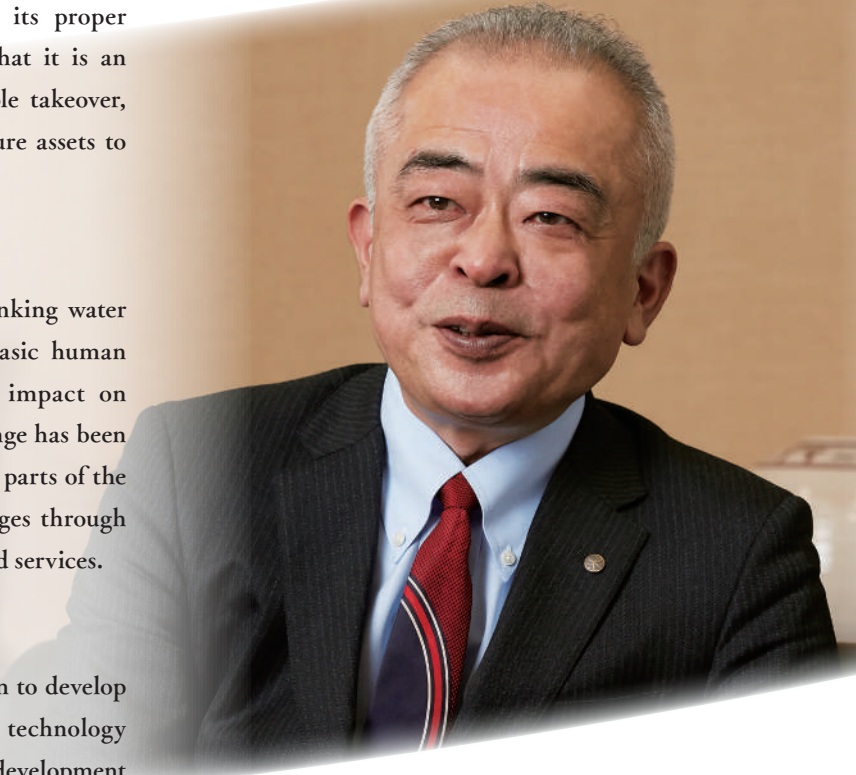
As shown in the SDGs, ensuring safe drinking water and adequate sanitation is one of the basic human needs, provision of which has a great impact on improving the quality of life. Climate change has been exacerbating the natural disasters in many parts of the world. We solve the water related challenges through our technical capabilities and local-oriented services.

Our Innovation

We have committed to an Open Innovation to develop an innovative solution and digitalized technology through a collaborative research and joint development with partners in the world. We also offer a wide range of engineering solutions as a comprehensive service provider through new business and management models including Design Build and Concession.

I hope that our extensive and comprehensive engineering consulting services can contribute to a sustainable society and community.

Addressing
Global Water Challenges
through our Extensive
Experience and Expertise.



MAYAMA Kazunori

President

Nihon Suido Consultants Co., Ltd.

VISION

LEAD Public Private Partnership

Develop relationships with water and wastewater utilities based on mutual trust,
Offer a One-stop Full-service as an expert in the water sector,
Evolve comprehensive and local-oriented services pertaining to water and wastewater utilities.

MANAGE Global Water Utilities

Deploy advanced and extensive expertise duly accumulated over a period of time in Japan and over 70 countries,
Develop high-quality water and sewerage infrastructure around the world,
Strengthen internal organizational structure and partnership with business partners.

CHALLENGE New Business Ventures

Promote R&D to develop innovative solutions and digital technologies,
Work with business partners to develop and sell technologies,
products and business models.

To achieve our vision, we have committed to undertake "human resources development" through capacity building and training activities duly respecting the diversity of our staff. We have adopted well-planned, long-term programs that enable improvement of human resources in the entire company. We have also created a comfortable workplace that allows the employees to function at their full potential under a secure environment, as well as achieve a proper work-life-balance.

HISTORY

1959 Incorporation of Nihon Suido Consultants Co., Ltd. in Minato-ku, Tokyo

1962 Establishment of Mission Statement

1963 Relocation of Head office to Shinjuku-ku, Tokyo

1965 Establishment of Group Company: Suikou Service Co., Ltd.

1994 Relocation of Head office to Shinjuku Square Tower, Tokyo
Opening of Indonesia Representative Office

1998 Certification of ISO 9001 (Quality Management System)

2001 Certification of ISO 14001 (Environmental Management System)

2006 Opening of Korea Representative Office

2007 Opening of Vietnam Representative Office

2009 Certification of ISO 27001 (Information Security Management System)

2011 Establishment of Group Company: NSC Tech Co., Ltd.

2012 PT DACREA Design and Engineering Consultants in Indonesia become our group company
Establishment of Group Company: Io Co., Ltd.

2013 Sabo Engineering Co., Ltd. become our group company

2014 Opening of India Representative Office

2015 Certification of ISO 55001 (Asset Management System)

2016 Certification of Construction Business License by Tokyo Metropolitan Government

2018 Certification of Construction Business License by Minister of Land, Infrastructure, Transport and Tourism
Opening of Philippine Branch
Opening of Singapore Branch

2019 Introduction of ISO Integrated Management System

2021 Opening of China Representative Office

No.1 Leading Company

NSC is proud to be a pioneer in water consultancy specializing in water supply and sewerage systems since its incorporation in 1959. We are No.1 in sales in our field of expertise in Japan. Besides Japan, we have past and present work experience in over 70 countries all over the globe. We cover all aspects of water infrastructure, including rivers and water environment. We work with ministries, local municipalities, water and wastewater utilities, private companies, and bi-lateral and multi-lateral international funding agencies in Japan and around the world. Over the years, we have earned the respect and trust of our Clients worldwide.

Our Extensive Expertise

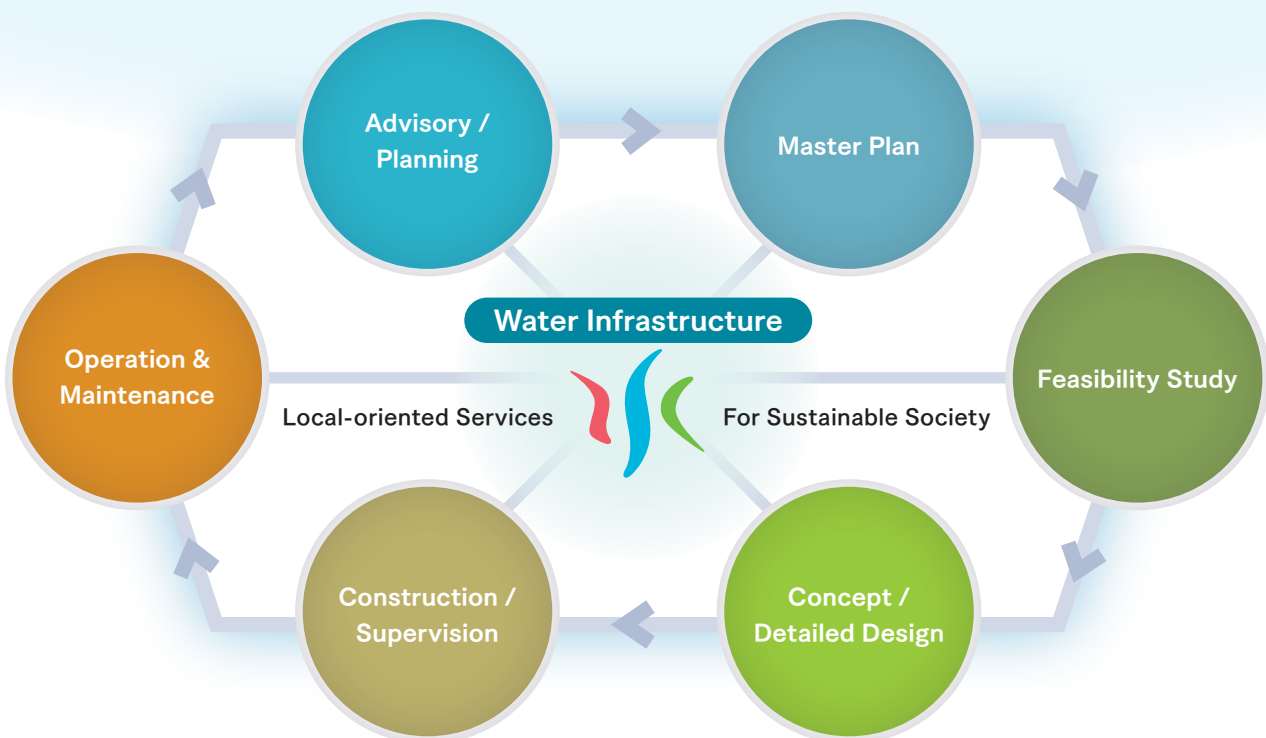
NSC is a consulting firm specializing in the water sector. This is of a great advantage to us as we are able to bring in extensive and comprehensive engineering consulting services on every component of a project life cycle from master plan, feasibility study to concept and detailed design, construction supervision, and operation and maintenance. Most of our projects include a component on capacity building, training and technology transfer. We also provide advisory services on any aspect pertaining to water infrastructure. We provide our services by integrating and utilizing sophisticated knowledge and technologies tailored to give local and sustainable solutions.

Global Business

We have worked in over 70 countries around the world. We have rendered our consulting services for improvement and augmentation of water supply and sewerage systems in developing countries where people do not have access to safe water and adequate sanitation. We have also provided comprehensive solutions for sustainable management of water and wastewater utilities all over the world. We address the global water related challenges through our extensive expertise and local-oriented services.

Water for Life

Water is essential for life. Sometimes water causes disasters and accidents, such as floods, droughts, water contamination. NSC contributes to a safe and healthy living environment for many people through our extensive and comprehensive engineering consulting services for water infrastructure. NSC also contribute to a resilient and sustainable society to mitigate the impact of climate change and pandemics.



As a leading company in the water industry, we evolve local-oriented water service provider and address water

We evolve our consultancy services in survey, planning, design, construction supervision and maintenance of water supply facilities but also in new business and management models such as PPP and DBO as an advisory consultant or primary contractor.

We contribute to sustainable operation and management of water utilities through our extensive expertise.

Master plan and design for water supply facilities including risk management, mitigation and adaptation for climate change, earthquake-resistance, asset management, efficient water treatment, disaster management.

River

Our extensive expertise in river management covers the entire watershed from water source to estuaries and coastal areas. We use our wide range of advanced skills for flood control, water resources management and water environment conservation.

River infrastructure development projects, including planning and design of river embankment, river front, dam and reservoir, flood and water quality simulation, master plan for water environment conservation, river maintenance planning.

Water Supply



Environment



We contribute to develop a low-carbon society through planning and design of waste management and water cycle management.

Survey, planning and design for waste disposal and recycling, sewage sludge management, water quality conservation and renewable energy.

Digital Transformation



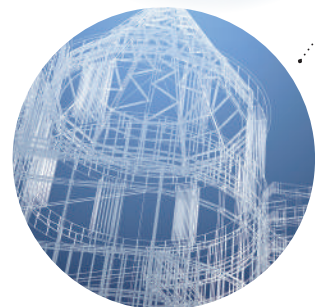
We provide leading cutting-edge consulting services for digital water solutions through our proven information technologies.

Development and operation of digital solutions for efficient, preventive, safe and resilient water management.

Cloud-based asset management system with GIS for water and sewer pipelines [Blitz GIS]

Cloud-based asset management system for water supply and sewerage facilities [Blitz GROW]

Structural Design

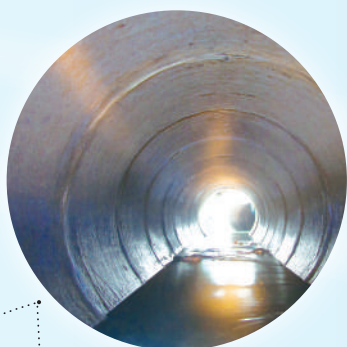


to a comprehensive and related challenges.

We provide sophisticated planning and design of sewerage facilities as well as construction supervision, maintenance, project finance and business management.

We also evolve our consultancy services for new business and management models such as PPP and DBO as an advisory consultant or primary contractor.

Master plan and design for sewerage facilities, including optimization of wastewater treatment process, risk management, mitigation and adaptation for climate change, earthquake-resistance, asset management, runoff and flood analysis, disaster management.



Sewerage



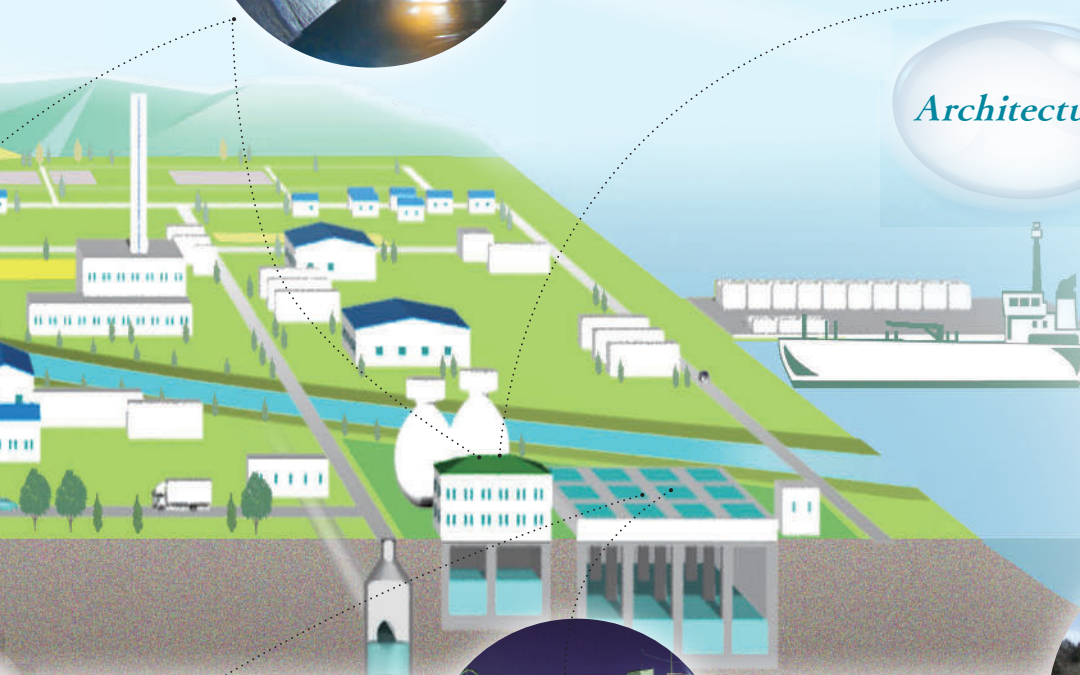
Overseas



Architecture

We use leading cutting-edge technologies for the infrastructure architectural design in harmony with the local climate, landscape and environment.

Design of a suitable architectural space for water supply and sewerage facilities, analysis/update of architectural functions.



Machinery, Electricity, Plant

We provide consultancy services for survey, planning and design of mechanical and electrical equipment to meet diverse duties and design lives based on our extensive experience and understanding of equipment performance.

Development of plant systems for water supply and sewerage facilities with disaster prevention, energy saving and renewable energy.



Construction

We evolve our consultancy services for new business and management models such as PPP and DBO.

Construction business license for civil engineering works and other 14 industry sectors.

We provide an optimized structural design to meet diverse needs based on our extensive experiences, utilizing advanced design technology such as FEM analysis.

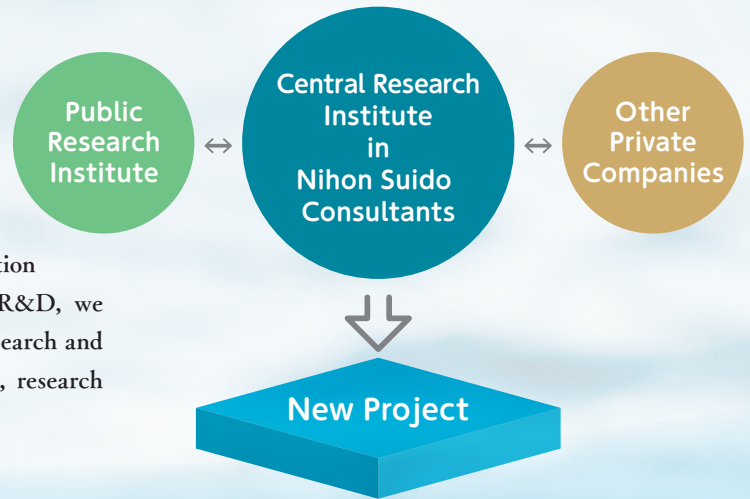
Integrated analysis for structures and grounds related to water supply and sewerage facilities, earthquake-resistance analysis and design.

Innovation for Water

Research and Development

The Central Research Institute of NSC leads our Research and Development (R&D) for an innovative solution and digitalized technology. In order to accelerate the R&D, we commit to an Open Innovation through a collaborative research and joint development with domestic and foreign universities, research institutes and other private companies.

NSC invests 1% of the company's annual budget in R&D.



In-house Training

We conduct seminars and study sessions to deepen and expand the expertise, explore business opportunities and exchange information and ideas.

The main training activities include:

World Incubator (WIN) Department

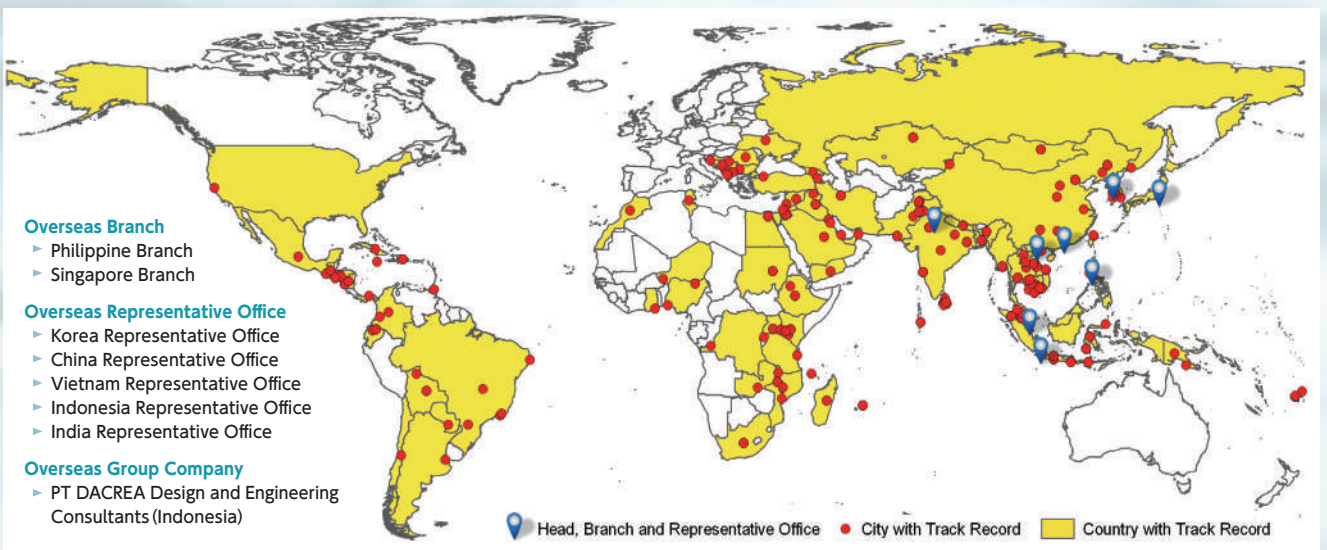
Some young professionals of NSC belong to the WIN Department and attend some seminars, workshops and on-job trainings periodically to enhance their knowledge on international project implementation and their English communication capability.

NSC Symposium

The NSC symposium is an annual event with a specific theme to promote better understanding of the company's business, to generate new ideas and to deepen exchanges among employees. Students from universities are also invited to the event.



Our Presence in the World





Shinjuku Square Tower 6-22-1 Nishi-Shinjuku, Shinjuku-ku,
Tokyo 163-1122 Japan

TEL +81-3-5323-6200 FAX +81-3-5323-6480

<http://en.nissuicon.co.jp/>



◆ Outline of NSC

- **Establishment** 25th May 1959
- **Capital** 100,000,000 Japanese Yen (Authorized Capital 400,000,000 Yen)
- **Number of Employees** 634 (incl. Directors and Officers)

◆ Directors and Officers

- Chairman: Yoshikazu NOMURA
- President: Kazunori MAYAMA
- Director: Nobuaki KOISHIKAWA
- Director: Shinji NAKANISHI
- Independent Director: Tsukasa SATO
- Independent Director: Kenichi OGAWA
- Director/Corporate Auditor: Koichiro HARU
- Independent Director/Corporate Auditor: Hirohisa TAKADA
- Independent Director/Corporate Auditor: Yuki MATSUDA
- Vice President: Kyogo NOMURA
- Managing Director/Corporate Officer: Naohito TANEICHI
- Managing Director/
- Corporate Officer: Michio SUGI
- Corporate Officer: Kazuyuki SAKAI
- Corporate Officer: Daigo YOSINARI
- Corporate Officer: Kazuhiro KONNO
- Corporate Officer: Masaharu DOMICHI
- Corporate Officer: Masaru TSURIYA
- Corporate Officer: Masayuki ANEZAKI
- Corporate Officer: Masaru FUKUHARA
- Corporate Officer: Seiji YAMAMOTO
- Corporate Officer: Katsutoshi MIYAMOTO
- Corporate Officer: Taro KOMINAMI
- Corporate Officer: Tetsuya ASAHINA
- Corporate Officer: Tetsuro MAKITA
- Corporate Officer: Takehiko OGA

◆ Field of Activities

- Water Supply, Sewerage, and Sanitation
- Flood Control, River Engineering
- Lake, Pond, Coastal Water Environment
- Industrial Wastewater and Solid Waste
- Urban and Regional Development

◆ Office Address

- **Head Office**
22-1 Nishi-Shinjuku 6-Chome, Shinjuku-ku, Tokyo 163-1122, Japan
TEL: +81-3-5323-6261 FAX: +81-3-5323-6487
URL : <https://en.nissuicon.co.jp/>
E-mail : webmaster@nissuicon.co.jp
- **Central R & D**
22-1 Nishi-Shinjuku 6-Chome, Shinjuku-ku, Tokyo 163-1122, Japan
- **Philippine Branch**
26F Twenty-Four Seven McKinley, 24th Street corner 7th Ave., Bonifacio Global City, PHILIPPINES
URL: <http://www.nissuicon.co.jp/philippine/>
- **Singapore Branch**
#02-03, Singapore Water Exchange, PUB Water Hub 84 Toh Guan Road East, Singapore 608501
- **Indonesia Representative Office**
Mutiara Building 4th Floors suite 403, Jl. Mampang Prapatan Raya No. 10, Jakarta Selatan, DKI Jakarta 12790, INDONESIA
- **Vietnam Representative Office**
2nd Floor, Kim Hoan Building, 19 Duy Tan Street, Cau Giay District, Hanoi City, VIETNAM
- **China Representative Office**
Metro Plaza 26th Floor Room 2614, No.183 Tianhebei Road, Tianhe District, Guangzhou, Guangdong Province, China

◆ Subsidiary Companies

- NSC Tech Co., Ltd.
- IO Co., Ltd.
- SABO-Engineering Co., Ltd.
- P.T. DACREA, Indonesia

◆ Scope of Services

- Reconnaissance and Diagnosis
- Research and Study
- Planning(M/P, F/S)
- Basic Design, Detailed Design
- Construction Supervision and Management
- O&M Improvement
- Water Quality Analysis
- Environmental Assessment
- Economic and Financial Analysis

◆ Number of Staff with Registered Qualifications

Qualified License		No	Qualified License	No
Ph.D.	• PhD in Engineering	16	• 1st-Class Architect / Building Engineer	27
Professional Engineer (P.E.Jp)	• Civil Engineering	71	• 1st-Class Architect (Structural Design)	1
	• Water Supply & Sewerage	284	• 1st-Class Architect (Building Facility Design).	2
	• Agriculture	1	• Building Mechanical and Electrical Engineer	8
	• Environmental Engineering	8	• Certified Environmental Measurer	10
	• Electrical and Electronics Engineering	12	• Certified Surveyor	45
	• Environment	6	• Concrete Maintenance Engineer	17
	• Mechanical Engineering	1	• 1st-Class Civil Engineering Works Execution Managing Engineer	48
	• Information Engineering	3	• 1st-Class Plumbing work operation and management engineer	14
	• Industrial Engineering	3	• 1st-Class electrical work operation and management engineer	15
	• Comprehensive Technical Management	106	• 1st-Class building operation and management engineer	4
	RCCM (Registered Civil Engineering Consulting Managers)	• River, Coastal and Ocean Engineering	15	• Qualified Person for Energy Management
• Water Supply and Industrial water Supply		18	• 2nd Grade Chief electrical engineer	2
• Sewerage		16	• 3rd Grade Chief electrical engineer	16
• Irrigation, Drainage & Rural Engineering		11	• 1st Grade Water Pollution Control Manager	24
• Soil Mechanics and Foundation		4	• Integrated Sewer Pipeline Management Engineer	10
• Material and Structures		3	• River Maintenance and Management Engineer	3
• Environmental Assessment & Management for Construction		8	• Water Utility Management Engineer(1st-Class Water Facility)	16
• Electric Power Applications		6	• Water Utility Management Engineer(1st-Class Pipe Facility)	5
• Waste		1	• Value Engineer Leader	27
• Construction Planning, Construction Equipment, and Cost Estimation		2	• Value Engineering Specialist	2
• Geological		1	• APEC Engineer (Civil)	5
• Mechanical		2	• Information Technology Engineer (IT Strategist)	1
• Road		1	• Executive Professional Civil Engineer	4
			• Certified Asset Management Assessor(CMMA)	10
			• METI Registered Management Consultant	1

◆ ISO Registration

- ◆ QC18J0029(ISO9001:2015) ◆ EC18J0028 (ISO14001:2015)
- ◆ IC18J0472(ISO27001:2013) ◆ AS14J0001(ISO55001:2014)



NIHON SUIDO CONSULTANTS CO., LTD.
22-1, Nishi-Shinjuku 6-chome, Shinjuku-ku, Tokyo, Japan

CERTIFICATE

Certificate No.: QC18J0029

ISO 9001:2015 · JIS Q 9001:2015

Consulting services (strategy, survey, study, planning, design, construction supervision, operation and maintenance of facilities, diagnosis, and water examination) for domestic and overseas projects, related financial and economic analysis, and information system development and sales in the following sectors:
 (1)Water Supply, Sewerage and Industrial Water Works
 (2)Flood Control, Water Utilization, Environmental Management for Rivers, Lakes and Coastal Lines
 (3)Disposal of Industrial Waste Water, City Waste
 (4)Architectural, Urban and Regional Development
 (5)Agricultural Development

Our organization certifies the organizations described in attached Appendix to be complied with the requirement of indicated above management system.

Registration Date :30Nov/1998	Japan Audit and Certification Organization for Environment and Quality
Recertification Date:30Oct/2022	2-2-19 Akasaka, Minato-ku, Tokyo, Japan
Issue Date :26Oct/2022	
Certificate Expiry :29Oct/2025	President & CEO <i>H. Onodera</i>
(Transfer Date:29Mar/2019)	

To be used in conjunction with attached Appendix



NIHON SUIDO CONSULTANTS CO., LTD.
22-1, Nishi-Shinjuku 6-chome, Shinjuku-ku, Tokyo, Japan

CERTIFICATE

Certificate No.: EC18J0028

ISO 14001:2015 · JIS Q 14001:2015

Consulting services (strategy, survey, study, planning, design, construction supervision, operation and maintenance of facilities, diagnosis, and water examination) for domestic and overseas projects, related financial and economic analysis, and information system development and sales in the following sectors:
 (1)Water Supply, Sewerage and Industrial Water Works
 (2)Flood Control, Water Utilization, Environmental Management for Rivers, Lakes and Coastal Lines
 (3)Disposal of Industrial Waste Water, City Waste
 (4)Architectural, Urban and Regional Development
 (5)Agricultural Development

Our organization certifies the organizations described in attached Appendix to be complied with the requirement of indicated above management system.

Registration Date :30Oct/2001	Japan Audit and Certification Organization for Environment and Quality
Recertification Date:30Oct/2022	2-2-19 Akasaka, Minato-ku, Tokyo, Japan
Issue Date :12Oct/2022	
Certificate Expiry :29Oct/2025	President & CEO <i>H. Onodera</i>
(Transfer Date:29Mar/2019)	

To be used in conjunction with attached Appendix



NIHON SUIDO CONSULTANTS CO., LTD.
22-1, Nishi-Shinjuku 6-chome, Shinjuku-ku, Tokyo, Japan

CERTIFICATE

Certificate No.: IC18J0472

ISO/IEC 27001:2013 · JIS Q 27001:2014

Consulting services (strategy, survey, study, planning, design, construction supervision, operation and maintenance of facilities, diagnosis, and water examination) for domestic and overseas projects, related financial and economic analysis, and information system development and sales in the following sectors:
 (1)Water Supply, Sewerage and Industrial Water Works
 (2)Flood Control, Water Utilization, Environmental Management for Rivers, Lakes and Coastal Lines
 (3)Disposal of Industrial Waste Water, City Waste
 (4)Architectural, Urban and Regional Development
 (5)Agricultural Development

Statement of Applicability:ISMS-01 Integrated Version 1

Our organization certifies above organization to be complied with the requirement of indicated above management system.

Registration Date :30Mar/2009	Japan Audit and Certification Organization for Environment and Quality
Recertification Date :30Oct/2022	2-2-19 Akasaka, Minato-ku, Tokyo, Japan
Issue Date :14Oct/2022	
Certificate Expiry :29Oct/2025	President & CEO <i>H. Onodera</i>
(Transfer Date:15Mar/2019)	

To be used in conjunction with attached Appendix



NIHON SUIDO CONSULTANTS CO., LTD.
22-1, Nishi-Shinjuku 6-chome, Shinjuku-ku, Tokyo, Japan

CERTIFICATE

Certificate No.: AS14J0001

ISO 55001:2014 · JIS Q 55001:2017

Consulting services (strategy, survey, study, planning, design, construction supervision, operation and maintenance of facilities, diagnosis, and water examination) for domestic and overseas projects, related financial and economic analysis, and information system development and sales in the following sectors:
 (1)Water Supply, Sewerage and Industrial Water Works
 (2)Flood Control, Water Utilization, Environmental Management for Rivers, Lakes and Coastal Lines
 (3)Disposal of Industrial Waste Water, City Waste
 (4)Architectural, Urban and Regional Development
 (5)Agricultural Development

Our organization certifies the organizations described in attached Appendix to be complied with the requirement of indicated above management system.

Registration Date :27Feb/2015	Japan Audit and Certification Organization for Environment and Quality
Recertification Date:30Oct/2022	2-2-19 Akasaka, Minato-ku, Tokyo, Japan
Issue Date :17Oct/2022	
Certificate Expiry :29Oct/2025	President & CEO <i>H. Onodera</i>

To be used in conjunction with attached Appendix