

## AVALUABLE ENVIRONMENT FOR THE FUTURE

“

Fulfilment of corporate social responsibility and contribution to the welfare of humankind while increasing the corporate value through the performance of excellent technologies to meet the challenges associated with the global environment, national land protection and infrastructure development in local areas.

”



[www.ejec.ej-hds.co.jp/en](http://www.ejec.ej-hds.co.jp/en)

 **Eight-Japan Engineering Consultants Inc.**

📍 Nakano 2-24-11, Nakano-ku, Tokyo, Japan 164-8601


☎ +81-3-5341-5155 📠 +81-3-5385-8510 ✉ [overseas@ej-hds.co.jp](mailto:overseas@ej-hds.co.jp)

● **INTERNATIONAL DEPARTMENT**

**INFRASTRUCTURE  
SOLUTION  
CONSULTING  
COMPANY**

**CORPORATE BROCHURE** ●

**Planning and Design**




**Road, Bridge & Transport**  
Roads, bridges, flyovers, tunnels, urban transport facilities, road transportation and mobility planning, road lighting, underground structures, etc.



**River & Port**  
Rivers and river banks, erosion control, ports, river-side and coastal facilities, agricultural civil engineering, tsunami simulation and analysis, etc.



**Urban Planning & Environment**  
Urban/regional development planning, urban regeneration, parks/green spaces, city/area-scaled disaster mitigation plans, environmental impact assessment, public architecture, etc.




**Waste Management & Energy**  
Planning, F/S, transaction advisory, design and construction supervision, operation monitoring of waste management facilities such as Waste-to-Energy, recycling facility, sanitary landfills, etc.


**Engineering Technology and Survey**




**Infrastructure Maintenance**  
Inspection & survey and health check, service life extension plans, maintenance plans, design of maintenance and repair work, etc.



**Geology & Geotechnical Engineering**  
Geological surveys, various types of exploration, in-situ testing, soil and groundwater surveys, road disaster prevention, landslide disaster prevention, etc.



**Seismic Resistant & Disaster Prevention**  
Disaster scenario and disaster response plan, business continuity plan (BCP), aseismic reinforcement, traffic vibration control measures, disaster information networks, etc.



**ICT-based Survey & Compensation**  
3D measuring technology, aerial surveying, land surveying, monitoring equipment system, measurement management, all aspects of compensation work, etc.



**PROJECT MAP** ●

Akashi Kaikyo Bridge, Kobe, Hyogo Prefecture (Japan)

World map showing countries where EJEC has implemented projects (over 70 countries, focusing on Asia and Africa)

## ROAD, BRIDGE & TRANSPORT

Takaosan Interchange, Tokyo, Japan

Flyover at Tazara Intersection, Dar es Salaam City, Tanzania

Nagdhunga Tunnel construction, Kathmandu, Nepal

Transportation planning • road traffic planning • mobility study • roads, bridges, viaduct, underpass design and construction supervision • tunnel design • lighting • urban transportation • underground structures • inspection, measurement and diagnosis • long life extension • repair design • research, planning, and design related to maintenance and management • etc.

Umihotaru Parking Area, Tokyo, Japan

## WASTE MANAGEMENT & ENERGY

Izumo Energy Center, Izumo City, Japan

Semi-aerobic landfill site, Tak Province, Thailand

Kasumidai Clean Center, Mirai, Omitama City, Japan

Municipal solid waste management • 3R promotion • master plan for local government • study, procurement advisory, construction supervision and operation monitoring of waste treatment facility (Waste-to-Energy, biomass power plant, material recycle facility, sanitary landfill) • life-prolonging plan and dismantling advisory of waste treatment facility • advisory for industrial / radioactive waste treatment • EIA, etc.

Planning of an incineration plant (Waste-to-Energy) within an Eco-Industrial Town in the outskirts of Bangkok, Thailand

## ENVIRONMENT & ECOLOGY

Planning and design of an eco-park network within an Eco-Industrial Town in the outskirts of Bangkok, Thailand

Millennium Hope Hills, Iwanuma City, Japan

Applying AI to analyze rare raptors' activities

Environmental impact assessment (EIA) • strategic environmental assessment (SEA) • environment survey (air/water quality, noise, etc.) • biodiversity survey • environmental mitigation planning • landscape design • public park maintenance and management • municipal environmental policy-making • decarbonization planning • etc.

Proposal of a Central Eco-Park in Thu Duc City within Ho Chi Minh City, Vietnam

## URBAN PLANNING & DESIGN

Urban and regional planning • urban renewal • park and green space planning • disaster prevention town development • landscape planning and design • land readjustment project • architectural planning and design • etc.

Planning of an Eco-Industrial Town in the outskirts of Bangkok City, Thailand

Smart Eco-town proposal in Ho Chi Minh City, Vietnam

Best design award for a pedestrian bridge in Kobe City, Japan

Planning & landscape design proposal for Han River Corridor, Da Nang City, Vietnam

## DISASTER RISK MANAGEMENT

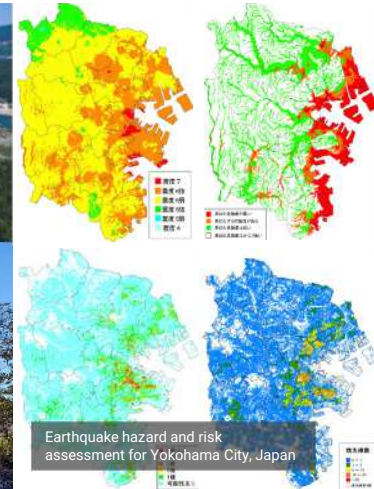
Disaster risk assessment • seismic resistance plan • BCP formulation • soundness survey • infrastructure life extension plan • seismic reinforcement and maintenance design • management of lifeline stock • flood countermeasure • Remote monitoring & operation of flood gate and sluice gate • warning system • disaster information network • etc.

Rachihama Green Space for Disaster Prevention, Fukushima Prefecture, Japan

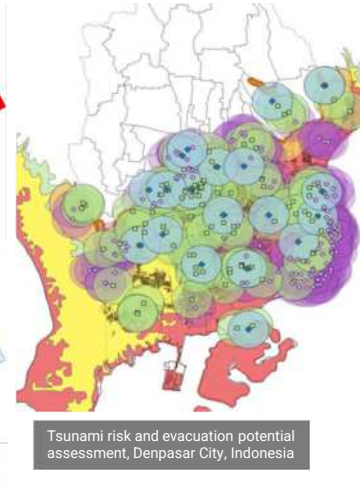


Land readjustment for post-earthquake reconstruction, Yamada Town, Japan

Earthquake reconstruction plan for Kahramanmaraş Metropolitan Municipality, Turkey



Earthquake hazard and risk assessment for Yokohama City, Japan



Tsunami risk and evacuation potential assessment, Denpasar City, Indonesia

## WATER SUPPLY & SEWERAGE

Development of water supply facilities • water intake • sedimentation basin • slow sand filter • clear water reservoir • water transmission system • elevated tank • disinfection equipment • water distribution system • public tap • private connection • water quality control • operation & maintenance training • water tariff system • etc.

Project for Establishment of Rural Water Supply System in Kambia Town, Sierra Leone

Safe water supply in Pyanj town, Khatlon Region, Tajikistan

Training on disinfection equipment, Khatlon Region, Tajikistan

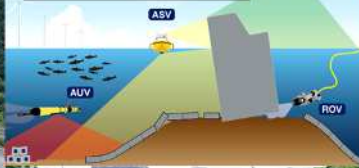
A new elevated tank as part of the water supply system in Pyanj town, Khatlon Region, Tajikistan

## RIVER & PORT

River planning and design • ports and coastal facilities • flood control • tsunami simulation analysis • tsunami and storm surge prevention • erosion control and sediment management • nature restoration • waterfront improvement • water conservancy facilities planning and design

Ryoishi District Coastal Conservation Facility, Iwate Prefecture, Japan

Underwater survey using ASV (Autonomous Surface Vehicle) and AUV (Autonomous Underwater Vehicle)



Nanase River two-tiered waterway, Kyoto City, Japan

## SDGs NEW BUSINESS

Strawberry Farm Co., Ltd.

## Summer strawberry

## GEOLOGY & GEO-TECHS

3D and other advanced measurement techs • aerial survey • Geological survey and test • landslide measurement • physical and statistical analysis • road disaster prevention • ground deformation and fracture analysis • excavation and fracture proximity effect analysis • liquefaction flow analysis and countermeasures • proximity effect analysis • etc.

Futaenotoge Tunnel, Kumamoto Prefecture, Japan

Higher grounds relocation work, Higashimatsushima City, Japan

Akatani River No. 3 erosion control dam construction, Gojo City, Japan

## Forest Materials Circulation

NAKAWOOD Co., Ltd.

## PROJECT MANAGEMENT

Public facilities operation, management and monitoring • Feasibility study (PPP, PFI) • Design and construction supervision • Operation advisory • Building Life Extension Plan • Business Survey • etc.

Nagahama Junior High School renovation project (BTO type), Ozu City, Japan

Improvement & Operation (PFI) of Date-Rekishi - no-mori Shokuiju Center, Date City, Japan

Northern school lunch center (DBO type), Matsusaka City, Japan

Wood board

Deco wood

Signature product



MOKUFUN (Wood flour) & products using wood flour

Outdoor/Exterior wood

Indoor/Interior wood

Rachihama Green Space for Disaster Prevention, Fukushima Prefecture, Japan

## Social Sustainability

### Resilience in risk management

EJEC considers the development of an emergency response system for disasters to be an important risk management issue and acquired resilience certification in 2016 while formulating and operating the business continuity policy (BCP). \*Under the business certification scheme, a business operator actively pursuing the continuity of its business is certified as "an organization contributing to Japan's national resilience."

### A company fully aware of Corporate Social Responsibility (CSR) while continually pursuing sustainable growth and creating shared value

EJEC contributes to solve the various social problems and social development through its core businesses such as an emergency response to disasters and assistance for reconstruction, active infrastructure consulting in developing countries and development of new projects to facilitate the regeneration of local areas as a general construction consultancy firm.

"Millennium Hope Hills" Disaster Prevention Park, Iwanuma City, Japan



## Environmental Sustainability

### Promotion of integrated ecological development via interdisciplinary approach

With a strong interdisciplinary approach, our related technical fields such as urban planning and urban design, transportation and mobility, waste management and energy, environment and ecology, landscape and architectural design, disaster management, and more join forces to tackle new emergent types of projects that require an interdisciplinary approach toward a common sustainable urban future. Together, we innovate and provide sustainable technical solutions that address both current and future challenges.



Planning of a smart, eco-urban center in Kanto Region, Japan

### Trade name

Eight-Japan Engineering Consultants Inc.

### Representatives

Representative Director and Chairperson: KOTANI Yuji  
Representative Director and President: KIN Seikan

### Corporate Headquarters

Tsushima-Kyomachi 3-1-21, Kita-ku, Okayama City Okayama,  
Japan 700-8617  
☎ +81-86-252-8917

### Tokyo Headquarters

Nakano 2-24-11, Nakano-ku, Tokyo, Japan 164-8601  
☎ +81-3-5341-5155 ✉ overseas@ej-hds.co.jp

### Start of Business

1st March, 1955  
31st May, 1957 (incorporated)  
1st June, 2009 (merged and reorganized)

### Capitalization

Paid-in capital: JPY 2,056,880,000

### Personnel Composition (as of 1st June 2024)

- Number of employees: 1058
- Technical staff: 874
- Administrative staff: 184

### Certified Persons (as of 1st June 2024)

- Professional engineer: 444
- Professional engineer (general tech. supervision): 94
- RCCM: 209
- Ph.D. holder: 28
- First class architect: 15
- Second class architect: 11
- Surveyor: 159
- Certified Environmental Measurer (Noise, Vibration): 3
- Certified Environmental Measurer (Concentration): 4
- First class construction managing engineer: 224
- Second class construction managing engineer: 20
- First class landscape managing engineer: 31
- Geological survey engineer: 81
- Soil Contamination Investigation Technical Manager: 7
- VE leader: 52
- APEC engineer: 2
- Compensation manager: 126
- Concrete diagnosis and maintenance engineer: 39
- Civil Structure Inspector: 9
- Road Bridge Inspector: 42

### Certified Persons

- River Maintenance Engineer: 8
- River Inspection Technician: 31
- Japan Society of Civil Engineers (Executive Professional Civil Engineer): 3
- Japan Society of Civil Engineers (Senior Professional Civil Engineer): 12

### Registered Businesses

- Registered Construction Consultant No. 01-116
- Registered Geological Surveyor No. 04-367
- Registered Surveyor No. (15)-263
- Registered First Class Architect Office Governor of Tokyo: No. 55520, Governor of Okayama: No. 1855, Governor of Oosaka: No. 25984
- Registered Compensation Consultant: No. 31-0687
- Registered Instrumentation and Certification Business Sound Pressure Level: Okayama No. 7-11 Vibration Acceleration Level: Okayama No. 8-7
- Registered Designated Investigation Institution under the Soil Contamination Countermeasures Act: No. 2003-8-2007
- Registered Specified Labor Dispatch Business: No. 33-300498
- Construction Company Permit No. 5-5545 (General) No. 5-5545 (Special)

### Registered Construction Consultant

Rivers/erosion control/coasts/ocean; ports and airports; roads; railways; sewerage; agricultural engineering; forest engineering; fisheries engineering; waste; landscaping; urban and regional planning; geology; soil and foundations; steel structures and concrete; tunnels; construction plans, construction equipment and cost estimation; construction environment; electrical and electronics

### Registered Compensation Consultant

Land surveying; land appraisal; properties; machine works; compensation for business and special compensation; business loss; compensation-related matters; general compensation

### International Standards

- ISO9001 certified and registered
- ISO14001 certified and registered (Tokyo Regional Office, Urban Environment, Waste, and Management Department)
- ISO55001 certified and registered (Asset Management Strategy Group)

### Others

Resilience Certificate certified and registered