



無限の可能性

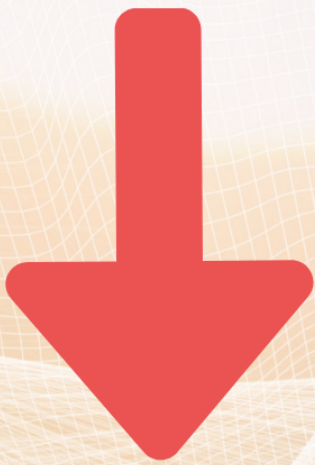
3RD YEAR

10EVENTS 1GRANT

1 CONTEST

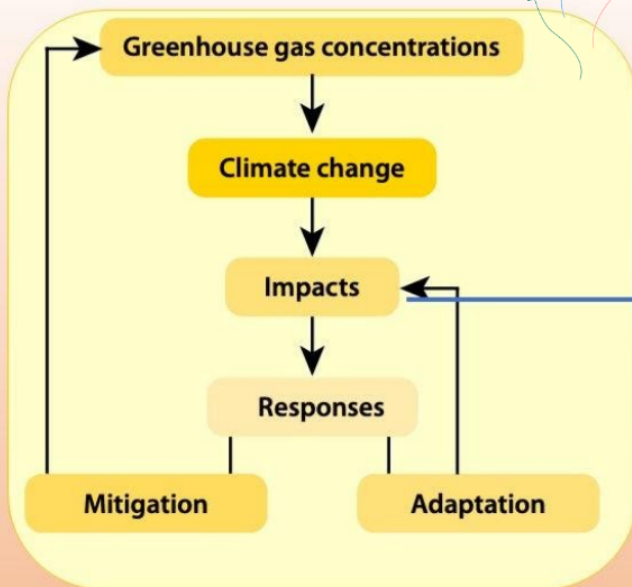
365 DIALOGUE

365 CITED PR



COP28 Japan

Pavilion



VISION

Ownership

MISSION

equity

Empower

Incubate

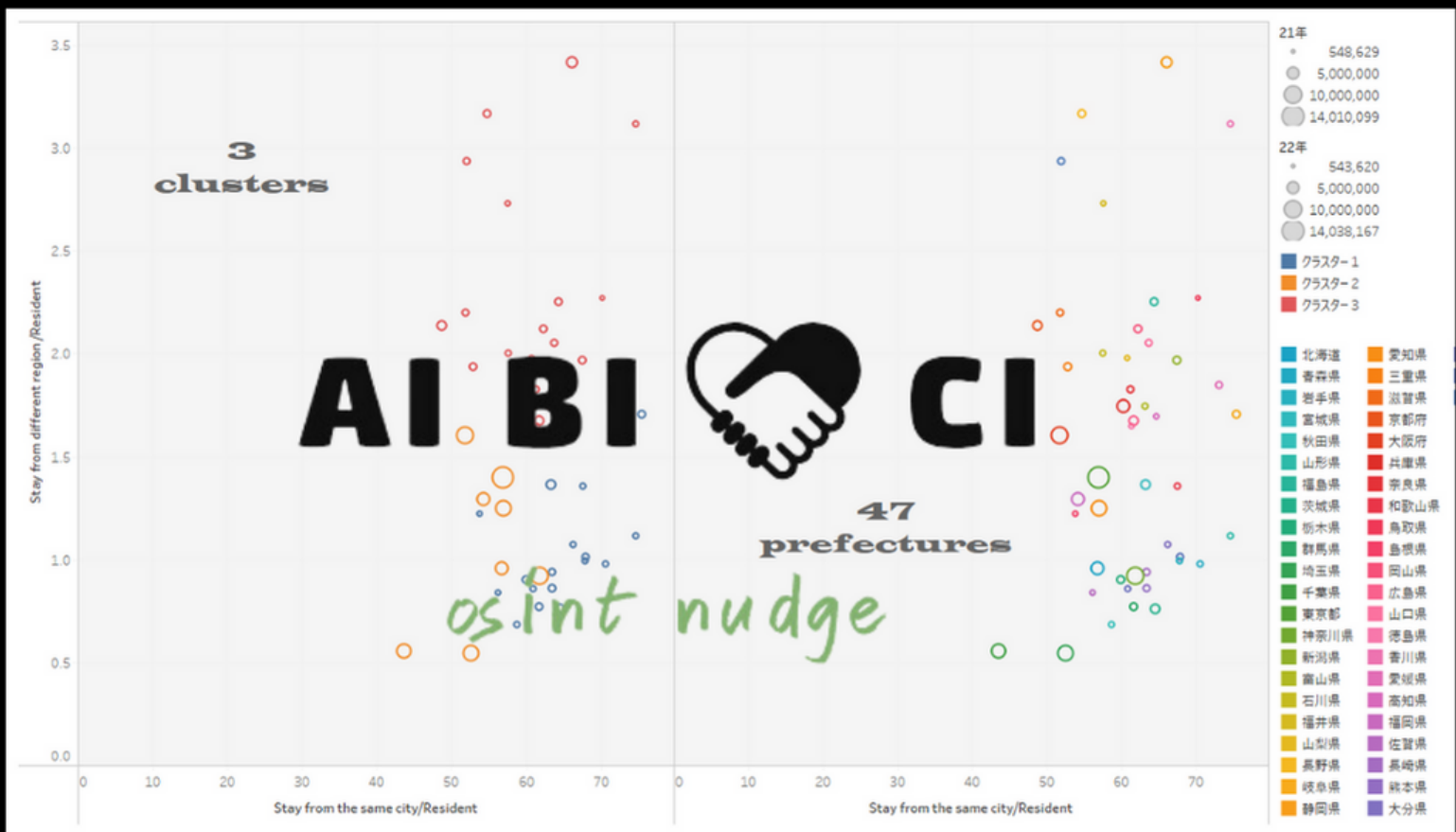


About Circular In-finity



SERVICE 1 EABOC

ENHANCED LOGIC AND DATA WITH AI/BI/OSINT AS DEEP COMMUNICATION.



<https://www.geospatial.jp/ckan/dataset/mlit-ikm-fromto>

VARIABLE: Capacity(Electricity)(Gas)w/o CCS Value: 37.02 UNIT: GW MODEL: IEEJ_Japan 2017

Scenario Simulator

SCENARIO	2005	2010	2015	2020	2025	2030	2035	2040	2045	2050
16by30+80by50_Def										
26by30+70by50_Def										
26by30+80by50_Def										
26by30+80by50_HighInt										
26by30+80by50_HiImp										
26by30+80by50_HiVRE										
26by30+80by50_LimNuc										
26by30+80by50_LoDem										
26by30+80by50_LoDem										
26by30+80by50_LoDem										
26by30+80by50_LoDem										
26by30+80by50_LoInt										
26by30+80by50_LoSstor										
26by30+80by50_LoVRE										
26by30+80by50_LoVRE										
26by30+80by50_NoCCS										
26by30+80by50_NoNuc										
36by30+80by50_Def										

Scenario Controller

Condition	Baseline	Condition			
	NULL	16by30 80by50	26by30 70by50	80by50	36by30 80by50
Def					
HIVREpot					
LoVREpot					
LoVREcost					
HighInt					
LoInt					
LoDem					
LoDemMid					
LoDemInd					
LoDemTra					
HiImpTra					
LimNuc					
NoNuc					
NoCCS					
LoStorageCost					

LCCE 標準必要電容量
 LTO 寿命課金
 LCOS 標準化前夜
 VALCOE コスト
 VRE (包括調整済み) LCCE
 交差性再生可能エネルギー

Let's play

遊び方
 1. 上に4つの小さなエリアがあります。変数とモデルは好きなものを選びましょう。2. 値と単位が勝手に決まります。
 3. シミュレーターに色が付きます。
 4. シナリオコントローラーで見た目の箇所だけ取り出せます。

https://github.com/UTokyo-mip/JMIP_dataset/tree/master



KNOWLEGE IS POWER. DATA IS DOLLAR. BOTH NEED MANNER.

https://github.com/UTokyo-mip/JMIP_dataset

case study

底辺Vtuberが
メタバースを
占領する!

Copyright © 2021 studiof All Rights Reserved.

Hikikomori(Social Isolation)

Service2.
NSS

Navigation
of
Sustainability
by sharing
culture and
information



case study



Specified Skilled Worker

whatever you
want, we'll
navigate
Japanese
culture and
info.

CIRCULAR IN-FINITY



case study

女性アスリートのキャリアを支援する

Next-One

DEPORTE, Ltd.

Female Athletes
2nd Career

CI Announces the COPilot to 2030 Initiative: Pioneering a Sustainable Future Through Japanese Insights

Invites of educators and nonprofits to a unique, year-long exploration of Japan's untapped potential, fostering data-driven insights and empathetic connections

SAITAMA, JAPAN, November 14, 2023 /EINPresswire.com/ -- Circular In-finity (CI), a proponent of sustainable development and [educational innovation](#), has launched the COPilot to 2030 initiative. This year-long program is designed to support a select group of five projects each year, chosen for their potential to leverage CI's unique resources towards achieving global Carbon Neutrality by 2050. The booth launched on 7th Nov at Japan Pavilion online in COP28. The website is proudly introduced on "Platform for Net-Zero and Well-Being in Life" (<https://www.g7life.org/>) with its launch on 13th Nov.



Equity for Everyone of
Education and
Empowerment on the Earth"
Founder of Circular In-finity

CI's COPilot to 2030 initiative grants access to the "EABOC" (with Fig. "Scope of the World") service, which provides a detailed mapping of Japan's multifaceted dimensions. This analytical tool uncovers the breadth of the country's resources, from its economic prowess to its cultural heritage, aimed at enhancing global understanding.

Simultaneously, CI's NSS (With Fig. "State of Mind") service offers an introspective look at the psychological and sociological aspects driving Japan's innovative spirit and community ethos. This initiative is geared towards fostering an empathetic approach to education and non-profit activities, understanding that the mindset of individuals is a crucial factor in driving change.

By restricting the program to five carefully selected projects, CI ensures each initiative receives a high level of attention and resources, thereby maximizing the impact of the collaboration. This approach allows CI to provide not only data and analysis tools but also mentoring and guidance to ensure each project's success.

The COPilot to 2030 initiative reflects CI's commitment to transformative education and the empowerment of non-profit organizations. It is an invitation to explore the lesser-known aspects of Japan and to utilize this knowledge in the quest for a more sustainable and understanding world.

Circular In-finity is dedicated to sharing Japan's hidden data and fostering connections that empower and enlighten. As we look toward the milestones of 2030 and the vision of Carbon Neutrality by 2050, CI stands as a guiding light for organizations ready to make a lasting impact.

For more information on the COPilot to 2030 initiative and to apply, please visit:

[\[https://jprsi.go.jp/en/member/532\]](https://jprsi.go.jp/en/member/532)

SHINICHI SATO

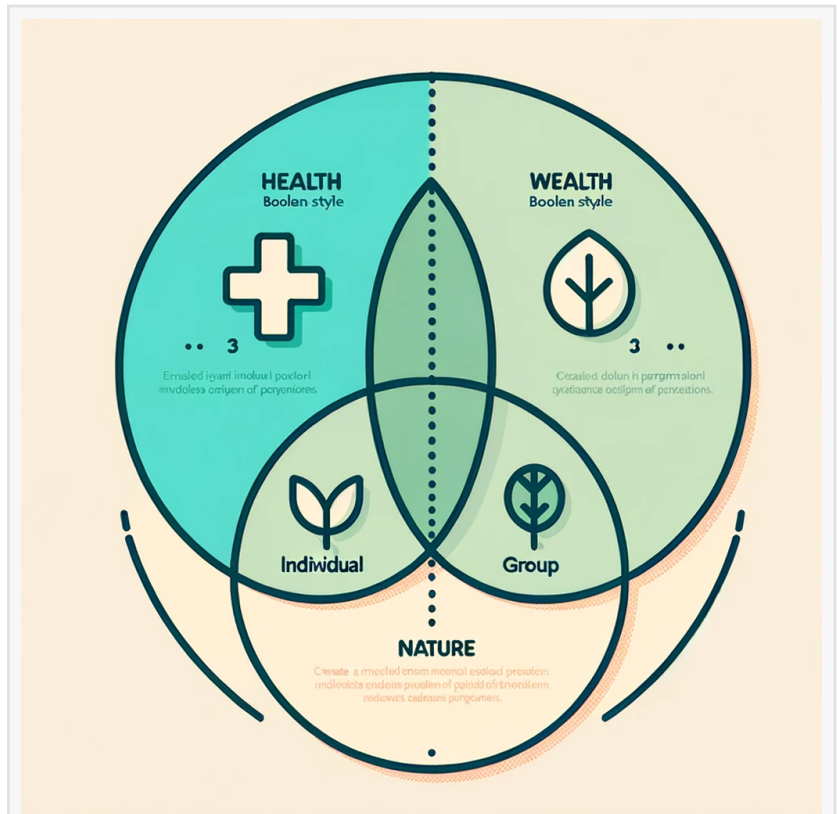
CO to 2030

shinichi@2030-oo.net

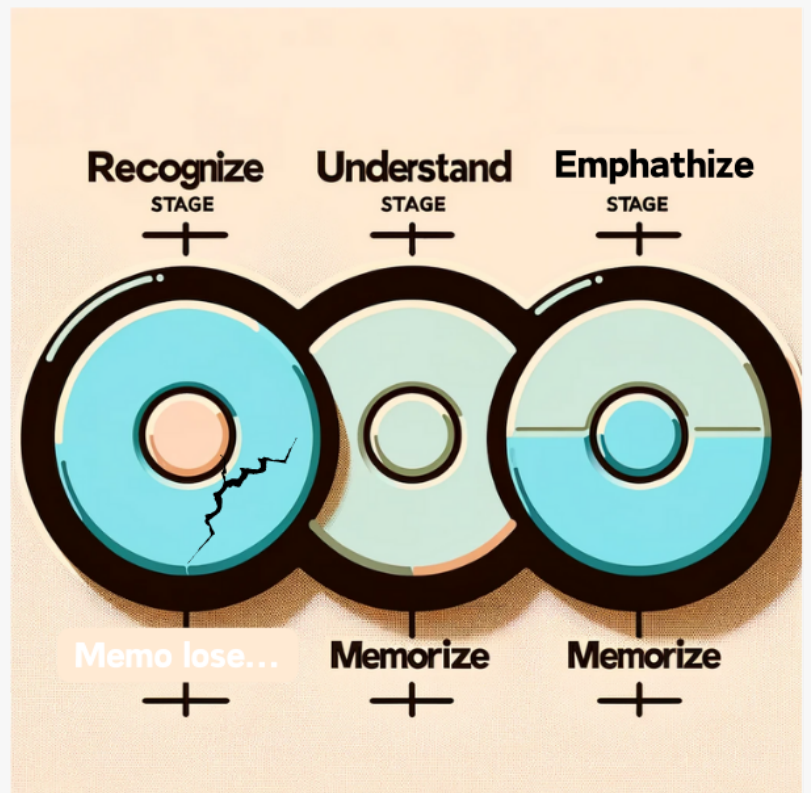
Visit us on social media:

[LinkedIn](#)

[TikTok](#)



Physical model of entity with 3 binary parameter.



Psychological model of trigger with 4 states.

EIN Presswire's priority is source transparency. We do not allow opaque clients, and our editors try to be careful about weeding out false and misleading content. As a user, if you see something we have missed, please do bring it to our attention. Your help is welcome. EIN Presswire, Everyone's Internet News Presswire™, tries to define some of the boundaries that are reasonable in today's world. Please see our Editorial Guidelines for more information.

© 1995-2023 Newsmatics Inc. All Right Reserved.