

Towards a brighter future for all

# Expo 2025

## Osaka, Kansai, Japan



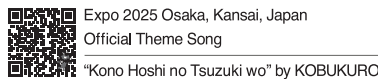
Period: **Sunday, 13 April to Monday, 13 October, 2025**

Venue: **Yumeshima Island, Osaka** Opening Hours: 09:00 to 22:00

Theme: Designing Future Society for Our Lives

Expo 2025 Osaka, Kansai, Japan will be an opportunity for the world to come together in one place under the theme of "Life." We hope that the Expo will foster the exchange of diverse values from around the world, encourages new connections and creations, overcome global challenges, safeguard each and every life, and by reflecting on the essence of life and how we live, we hope to make it an Expo that presents a vision of hope for the future.

**Expo 2025 Osaka, Kansai, Japan Official Website**



**Expo 2025 Osaka, Kansai, Japan Official Social Media**



This pamphlet was produced with the support of the subsidy project of JKA (Japan Keirin Autorace foundation), <http://jka-cycle.jp> CYCLE-KA Social Action

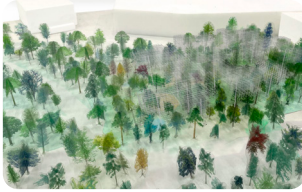


# Signature Project (Brilliance of Life Project)

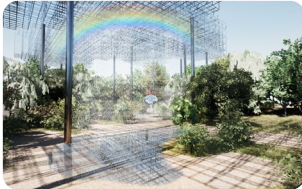


## Signature Pavilions

Creative pavilions led by eight producers who play active roles at the forefront of their fields. This is a place where every visitor can explore life and update their understanding of it.



©SANAA



©SANAA

**Theme** "Resonance of Lives"

### Better Co-Being

"Resonance of Lives" is a pavilion without a roof or walls. It aims to be a place where nature, which changes with the seasons, weather, and time of day, resonates with visitors, creating a shared journey towards the future. Experience various forms of resonance, including an installation where you can create a rainbow together.



**MIYATA Hiroaki**  
Professor, Keio University



©FUTURE OF LIFE / EXPO2025



©FUTURE OF LIFE / EXPO2025

**Theme** "Amplification of Lives"

### Future of Life

Half a century has passed since the Japan World Exposition Osaka 1970—we believe that human life in the future will be designed by human beings themselves. "Life" supported by technology, designed by technology. "Life" within technology (robots). Amplifying possibilities in "life".



**ISHIGURO Hiroshi**  
Professor, Osaka University  
Visiting Director, ATR Hiroshi Ishiguro Laboratories



©steAm Inc. & Tetsuo Kobori Architects All Rights Reserved



©steAm Inc. & Tetsuo Kobori Architects All Rights Reserved

**Theme** "Invigorating Lives"

### Playground of Life: Jellyfish Pavilion

This project aims to create relationships with a variety of worlds and totally transform what it means to learn, play, create, and "live", not only during the Expo but before and after it. This is a journey to explore an inclusive "co-creation" (democratisation of creativity) society for the future filled with playfulness and hope.



**NAKAJIMA Sachiko**  
Musician, mathematician and STEAM educator



©2024 Yoichi Ochiai / 設計+NOIZ / Sustainable Pavilion 2025 Inc. All Rights Reserved.



©2024 Yoichi Ochiai / WOW All Rights Reserved.

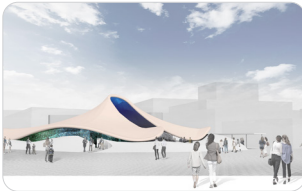
**Theme** "Forging Lives"

### null<sup>2</sup>

This giant structure shifts and transforms the surrounding scenery and people, creating a new and unknown visual experience. Visitors will experience their bodies being digitalised, transformed organically, and moved autonomously within the pavilion. These two experiences are the first-ever rediscovery of the mirror in recorded history.



©Ninagawa Mika  
**OCHIAI Yoichi**  
Media Artist



© DYNAMIC EQUILIBRIUM OF LIFE / EXPO2025



© DYNAMIC EQUILIBRIUM OF LIFE / EXPO2025

**Theme** "Quest of Life"

### DYNAMIC EQUILIBRIUM OF LIFE

Life exists in the grand flow that begins from a single cell. At our pavilion, we would like to hand over our philosophy to redefine life for a better society and future of the Earth. It will shake your view of life to its very core and rediscover the meaning of life and hope.



**FUKUOKA Shin-ichi**  
Biologist, Professor, Aoyama Gakuin University



© 2024 Shoji Kawamori/Office Shogo Onodera, All rights reserved.



© 2023 Shoji Kawamori / Vector Vision All rights reserved.

**Theme** "Totality of Life"

### LIVE EARTH JOURNEY

We express the ephemeral, precious, powerful, loving, beautiful brilliance of life, and the connections between all life that dwells in the universe, the oceans, and on land. We strive towards a paradigm shift from the human-centred to the life-centred, and appealing to the importance of protecting and nurturing life.



**KAWAMORI Shoji**  
Animation Director, Mechanic Designer,  
Vision Creator



© EARTH MART / EXPO2025



© EARTH MART / EXPO2025

**Theme** "Cycle of Lives"

### EARTH MART

Thinking about life through food. In an ambiance reminiscent of a shopping experience in a supermarket, you can have an opportunity to rethink what you may have taken for granted about food while sharing the joy, importance, and gratitude of "sharing a meal" with people from all over the world, within the limited resources of the Earth.



**KOYAMA Kundo**  
Broadcast writer, Vice President of  
Kyoto University of the Arts



© Naomi Kawase / SUO, All Rights Reserved.



© Naomi Kawase, All Rights Reserved.

**Theme** "Embracing Lives"

### Dialogue Theater — sign of life —

People create boundaries between one another due to their differences. However, people are emotional beings that can communicate with each other. Accepting one another through communication and changing ourselves will lead to a better future. Communication from our hearts will take place in this forest-like theater.



©LESLIE KEE  
**KAWASE Naomi**  
Filmmaker



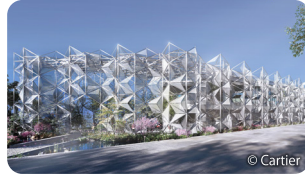
## Domestic Pavilions



Courtesy of the Ministry of Economy, Trade and Industry

### Japan Pavilion

With the theme of "Between Lives," the exhibition provides an opportunity for visitors to realise that they are alive through connections and circulation with other life, and that they are part of the lattice of life that is Earth.



### Women's Pavilion in collaboration with Cartier

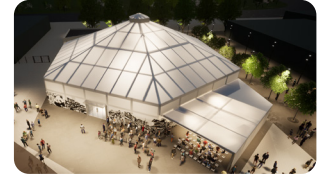
Based on the concept of "When women thrive, humanity thrives - towards a future where we live and shine together," we aim to use the experiences and perspectives of women to create an opportunity to form a world where all people can live truly equally, respect each other, and walk together in harmony while demonstrating their abilities.



Courtesy of the EXPO 2025 Osaka Pavilion Association

### Osaka Healthcare Pavilion

With the theme of "REBORN," this exhibition will provide an experience that allows both children and adults to enjoy experiencing the possibilities of Future Osaka from the perspectives of life and health.



Courtesy of the UNION OF KANSAI Governments

### KANSAI PAVILION

The nine prefectures of Shiga, Kyoto, Hyogo, Nara, Wakayama, Tottori, Tokushima, Fukui, and Mie will exhibit under the theme, "The Brilliance of Kansai's Rich History and Its Present Day," creating their own unique exhibition spaces to showcase diverse attractions such as the history, culture, and sights of the Kansai region.



## Pavilions for the Private Sectors



Sponsor: NIPPON TELEGRAPH AND TELEPHONE CORPORATION

### NTT Pavilion "Natural"

Using the next-generation infrastructure "IOWN," we will show you the shape of communication in the future, which will enable you to share space and sensations with people and things far away, transcending physical distance and psychological barriers.



Sponsor: The Federation of Electric Power Companies of Japan

### Electric Power Pavilion - Eggs of Possibilities

Like no other in the world, the "egg-shaped portable device" is created specifically for you and is looking forward to your visit. Let's move and feel the light and sound together! You will touch the energy technologies that are pioneering the future.



Sponsor: Sumitomo EXPO2025 Promotion Committee

### Sumitomo Pavilion

In order to help people maintain an interest in the social and environmental issues we face, we will provide interactive experiences in which they can encounter various "stories of life" in the forest, as well as the experience of planting trees.



Sponsor: Panasonic Holdings Corporation

### Panasonic Group Pavilion "NOMO NO KUNI"

Here at "The Land of NOMO" we will provide each child with an experience that will change their mindset, giving them the power to believe in themselves and the courage to take a step forward.



Sponsor: Mitsubishi General Committee for Expo 2025 Osaka, Kansai, Japan

### Mitsubishi Pavilion

The Mitsubishi Pavilion is like a mother ship sitting on the ground. It will take you on an epic journey through life, from the unknown deep sea to the distant universe.



Sponsor: YOSHIMOTO KOGYO

### YOSHIMOTO Pavilion waraii myraii

Our dream is for "waraii" (smiles) to become a global language, spreading new possibilities for laughter, demonstrating its power to connect children around the world with smiles, transcending both language and culture.



Sponsor: Pasona Group Inc.

### PASONA NATUREVERSE

The various exhibits on the theme of "Body, Mind, and Bonds" allow visitors to learn about the history of life, experience human knowledge and designs for future society, and convey gratitude for life.



Sponsor: ZERI Japan

### BLUE OCEAN DOME

The theme is "Revitalization of the Ocean." Through this dramatic visual experience, we hope to inspire behavioural change towards the Earth and the ocean, raise awareness of sustainable use of the ocean, and work to realise the "Osaka Blue Ocean Vision."



Sponsor: Bandai Namco Holdings Inc.

### GUNDAM NEXT FUTURE PAVILION

The spectacular world of Gundam is filled with new technologies and possibilities that have yet to be realised. Gundam provides an opportunity to spark an interest in new technology and space.



Sponsor: Tamayama Digital Tech Co., LTD

### TECH WORLD

Based on the concept of "Connecting the World, Creating Better Future Lives," we use digital technology to perform and realize a vision of a future society in which we coexist with nature and connect with people, for a brilliant life.



Sponsor: The Japan Gas Association

### GAS PAVILION OBAKE WONDERLAND

Based on the concept of "Bakero - Shape Our Future!", this pavilion talks about future technologies aimed at achieving carbon neutrality. Come enjoy the thrilling and exciting experience of transforming into the future together with "OBAKE (friendly shapeshifter)"!



Sponsor: Iida Group Holdings Co., Ltd.

### Joint Pavilion Iida Group Holdings x Osaka Metropolitan Univ.

The Moebius shape draped in Nishijin textiles expresses the hope that all "living" beings can live happily. Here, you can experience the future community that is realised through the fusion of tradition and evolution.



Sponsor: Osaka Restaurant Management Association

### ORA Gaishoku Pavilion 『～ UTAGE ～』

By making 『～ UTAGE ～』 known worldwide, we aim to bring hospitality, food experiences, new frontiers, excitement, and the development of the dining industry through 『～ UTAGE ～』.



## Future Society Showcase



Sponsor: NIPPON TELEGRAPH AND TELEPHONE CORPORATION

### Digital

Personal Agent for Visitors

We provide an Expo Site information app to help everyone get around the Expo Site without stress, supporting an efficient Expo experience.



Automatic Translation System

We provide various tools equipped with a purely domestic translation engine to create a futuristic communication environment free of "language barriers."



Sponsor: NTT

### Virtual

Virtual Expo Site

The Yumeshima Island site will be reproduced using 3DCG in an online space, and users will be able to walk around the virtual site using an avatar. At the physical Yumeshima Island site, visitors can also enjoy AR content.



Sponsor: Research Institute of Innovative Technology for the Earth (RIITE), OSAKA GAS CO., LTD

### Green

Carbon Recycle Factory

Able to see demonstration facilities for technologies that will contribute to the realization of a carbon-neutral society, such as technology that captures CO2 directly from the atmosphere (DAC) and methanation that synthesizes e-methane from CO2 and H2.



Sponsor: The Kansai Electric Power Company, Incorporated, OSAKA METRO CO., LTD.

Electric Buses

The Buses that automatically is charged electric power by themselves while in motion. You could get experience to ride in it and enjoy as it takes you around the Expo Site.



Sponsor: Iwatani Corporation

Hydrogen Ship

This provides a smarter, cleaner means of transportation for visitors travelling to the Expo Site by sea.



## Official Participants' Pavilion

Over 160 countries, regions, and international organisations will showcase their latest technologies and unique cultures. Experience each country's diverse lifestyles, technological innovations, traditions, and future-oriented initiatives.



**Australia**  
Chasing the Sun



**Republic of Austria**  
Austria. Composing the Future



**Kingdom of Belgium**  
Water



**Canada**  
Regeneration



**People's Republic of China**  
Building a Community of Life For Man And Nature  
— Future Society of Green Development —



**Czechia**  
Talent and Creativity for Life



**French Republic**  
A hymn to Love



**Federal Republic of Germany**  
Wal Germany



**Republic of Indonesia**  
Thriving in Harmony: Nature, Culture, Future



**Ireland**  
Creativity Connects People



**Italy**  
Art regenerates Life



**Republic of Korea**  
With Hearts : Connecting Hearts,  
Lives in Bloom



**State of Kuwait**  
Visionary Lighthouse



**Grand Duchy of Luxembourg**  
Doki Doki – The Luxembourg Heartbeat



**Principality of Monaco**  
Take Care of Wonder



**Kingdom of the Netherlands**  
Common Ground



**Sultanate of Oman**  
Earth, Water, and Humanity



**Republic of Poland**  
Poland. Heritage that drives the future



**Portuguese Republic**  
Ocean, the blue dialogue



**State of Qatar**  
Bridging Cultures, Shaping Futures



**Kingdom of Saudi Arabia**  
Together for a Better Future



**Republic of Singapore**  
Where Dreams Take Shape



**Kingdom of Spain**  
KUROSHIO



**Swiss Confederation**  
Life, Planet, Augmented Human



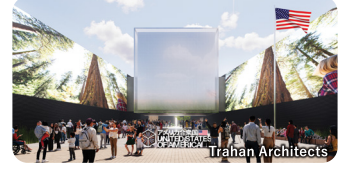
**Kingdom of Thailand**  
Thailand Connecting Lives for Great Happiness



**Turkmenistan**  
Inspiring a Better Tomorrow



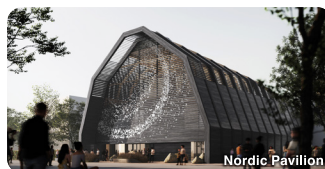
**United Kingdom of  
Great Britain and Northern Ireland**  
Come Build the Future



**United States of America**  
Imagine What We Can Create Together



**Republic of Uzbekistan**  
Garden of Knowledge



**Nordic Pavilion**  
(Iceland, Sweden, Denmark, Norway, Finland)  
Nordic Circle



\*This page contains images and themes of some Official Participants' Pavilions that have released perspective images as of June 2024. The Official Participants' pavilions are listed in alphabetical order.



## One World, One Planet.

TBD

If the world were one country (planet)

Scheduled to be held every day after sunset during the Expo



In a wishful moment that unites the hopes of people from around the world, the Expo site's sound and video systems, as well as the devices carried by visitors, synchronise and light up like the cells of a single large organism.

## THE HUMAN ORCHESTRA

TBD

The future orchestra in which every person's individuality plays

Scheduled to be held in the EXPO Hall for about 8 days from the opening day of the Expo



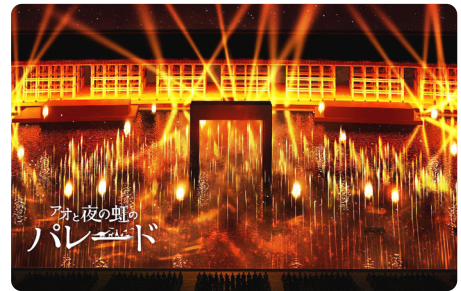
Each individual, with their diverse personalities, plays their own unique and original sound, and by recognising and resonating with each other's differences, they become one beautiful orchestra of the future.

\*Note: The above two are currently preliminary plans for the main events (proposals). Further details will be announced separately.

## A Spectacular Show of Water and Air "Under the Midnight Rainbow"

This water show takes place on the "Water Plaza," the water inside the Grand Ring, and combines water, air, light, fire, images, and music. On the water, a huge stage space will be created approximately 200 metres wide, approximately 60 metres deep, and with a show area of approximately 8,800 square metres.

Scheduled to be held daily at the Water Plaza after sunset during the Expo (184 days)



(Sponsored and images provided by: Suntory Holdings Limited, Daikin Industries, Ltd.)

## National Days, Special Days and Other Events



National Days (for countries and regions) and Special Days (for international organisations) are days to honour the participation of the Official Participants. They will be held to deepen the understanding of the culture of the Official Participants and contribute to the promotion of international goodwill. On these days, distinguished guests from Japan and abroad will be invited by the Official Participants to attend ceremonies and cultural events.

A diverse array of events will be held every day, designed to be thrilling and exciting while also providing opportunities for learning and discovering new things.



- Events where you can experience and interact with diverse international cultures
- Events where you can experience the theme of the Expo, Designing Future Society for Our Lives
- Events led by children and young people who will shape the future
- Events showcasing Japan's traditional and modern culture
- Events promoting Japan's regional highlights and attractions
- Events where you can experience cutting-edge science, engineering, new digital technologies,

and more

## Future Society Showcase

The Expo Site will serve as a showcase of future society, incorporating cutting-edge technologies and systems to realise a glimpse of what that future holds.



### Future-Life Future City

The Future City will present its vision, "To the city of happiness." A pavilion that allows you to virtually experience a representation of "the city of happiness" on a grand scale brought to life through a variety of innovations.



## Smart Mobility

### Advanced Air Mobility (AAM)

At the Mobility Experience, we aim to provide a vertiport within the Expo Site and enable the flying of AAM vehicles between it and a vertiport outside the Expo Site.



### Future-Life

#### Future Life Village (Future Life Experience & "TEAM EXPO Pavilion")

Here, you will experience future lifestyles and actions for the future, as well as think together and co-create what future society will look like.

### Gallery WEST

Rotating exhibitions featuring anime, fashion, and more will be displayed here during the Expo.

Exhibition area: Approx. 600 m<sup>2</sup>

### Pop-Up Stage West

### West Gate Bus Stop



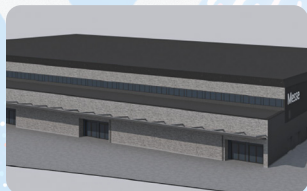
### EXPO Arena "Matsuri"

For holding outdoor events, such as large-scale live performances, video screenings, and festivals.

Capacity: 16,000 max  
Covered stage and large video displays

### Green Sustainability Dome

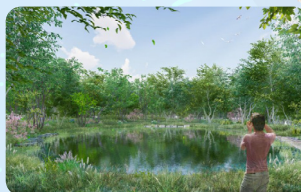
Featuring exhibitions, experiences, educational programmes, and tours of the venue on topics such as SDGs, climate change, resource recycling, and more.



### EXPO Exhibition Center "WASSE"

This is a centre for dialogue events and business exchanges aimed at solving global issues, as well as exhibitions and trade fairs.

Building area: Approx. 4,900 m<sup>2</sup>  
Capacity: Approx. 3,000



### Forest of Tranquility

The Forest of Tranquility is an especially peaceful and relaxing spot amidst the hustle and bustle of the Expo Site.

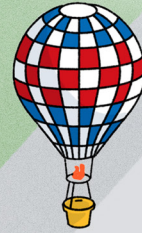
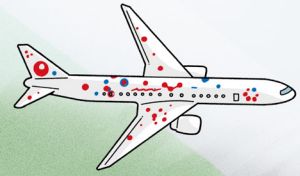
### Signature Pavilions

### Water Plaza



### The Grand Ring

When completed, this will be one of the world's largest wooden structures, with a total circumference of approximately 2 km, a building area (horizontal projection area) of approximately 60,000 m<sup>2</sup>, a height of 12 m (20 m on the outside), and an inner diameter of approximately 615m. From various locations on the roof of the Grand Ring, you can enjoy panoramic views of the entire Expo Site. If you look outside the Grand Ring, you can appreciate the appeal of the Expo Site, surrounded by sea and sky, including the abundant nature of the Seto Inland Sea and a view bathed in the light of the setting sun.



Pop-Up Stage  
North

Pop-Up Stage  
Inner East

Pop-Up Stage  
Outer East

Domestic Pavilions /  
Pavilions for Private Sectors

East Gate,  
Yumeshima Station,  
Osaka Metro Chuo Line

Official Participants' Pavilion



#### EXPO Hall "Shining Hat"

For theatrical events such as music, drama, performing arts, and futuristic entertainment.

Capacity: Approx. 1,900  
Hall with central stage and large video display



#### EXPO National Day Hall "Ray Garden"

For National Day and Special Day ceremonies, as well as other theatrical events.

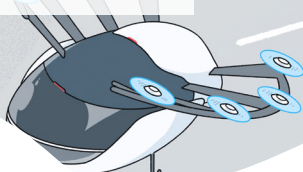
Seating capacity: Approx. 500

Pop-Up Stage  
South

#### Gallery EAST

Rotating exhibitions featuring anime, fashion, and more will be displayed here during the Expo.

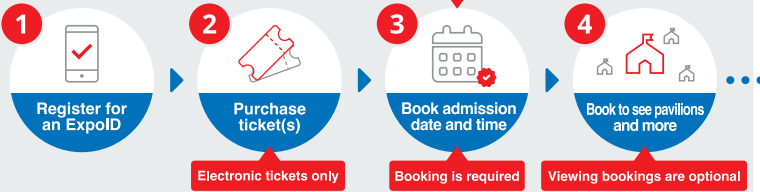
Exhibition area: Approx. 300 m<sup>2</sup>





## Advance tickets are a great deal!

First-come, first-served basis, starting six months prior to your desired admission date



### Pavilion & Event Entry Slot Lottery Application / Available Slot Application

Up to five choices can be made for each lottery \*Maximum of one slot per win

### Same-Day Registration

25 September to 6 October, 2024	3 to 2 Months Before the Day Before Your Visit	1 Month to 8 Days Before Your Visit	3 Days to 1 Day Before Your Visit	On the Day (inside the Expo site)
<b>Exclusive Bonus for Purchasing Super Early Bird One-Day Tickets</b> Pavilion & Event Lottery Application Period (with reservation) Winners announced gradually from 7 to 12 Oct.	<b>First Lottery</b> Pavilion & Event Lottery Application Period Winners announced 2 months prior	<b>Second Lottery</b> Pavilion & Event Lottery Application Period Winners announced 7 days prior	<b>Available Slot Reservation</b> (first-come, first-served) 1 slot can be reserved	<b>After 1 slot is used, a new slot can be reserved</b>

## Sales Available from the Advance Sales Period

Ticket Information		Adult (18 y/o+)	Junior (12 - 17 y/o)	Child (4 - 11 y/o)
<b>Opening Ticket</b>	One entry allowed from 13 to 26 Apr., 2025	4,000 JPY	2,200 JPY	1,000 JPY
<b>First-Half Period Ticket</b>	One entry allowed from 13 Apr. to 18 Jul., 2025	5,000 JPY	3,000 JPY	1,200 JPY
<b>Super Early Bird One-Day Ticket</b>	One entry allowed at any time during the Expo [Sales] From 30 Nov., 2023 to 6 Oct., 2024	6,000 JPY	3,500 JPY	1,500 JPY
<b>Early Bird One-Day Ticket</b>	One entry allowed at any time during the Expo [Sales] From 7 Oct., 2024 to 12 Apr., 2025	6,700 JPY	3,700 JPY	1,700 JPY
<b>Summer Pass</b> (on sale until 31 Aug.)	Multiple entries allowed from 19 Jul. to 31 Aug., 2025, every day after 11:00	12,000 JPY	7,000 JPY	3,000 JPY
<b>Season Pass</b> (on sale until 3 Oct.)	Multiple entries allowed from 13 Apr. to 3 Oct., 2025, every day after 11:00	30,000 JPY	17,000 JPY	7,000 JPY
<b>Special Ticket</b> (on sale during the Expo)	A guest with a disability certificate and an accompanying guest (assistant) can enter	3,700 JPY	2,000 JPY	1,000 JPY

## On Sale During the Expo

Ticket Information		Adult (18 y/o+)	Junior (12 - 17 y/o)	Child (4 - 11 y/o)
<b>One-Day Ticket</b>	One entry allowed at any time during the Expo	7,500 JPY	4,200 JPY	1,800 JPY
<b>Weekday Ticket</b>	One entry allowed on a weekday after 11:00, excluding Sat., Sun., and holidays	6,000 JPY	3,500 JPY	1,500 JPY
<b>Night Ticket</b>	One entry allowed during the Expo after 17:00	3,700 JPY	2,000 JPY	1,000 JPY

\*Tax included. \*Age refers to a person's full age (in terms of full years lived since birth) as of 1 Apr., 2025. Free admission for children 3 years old or younger. \*All admission tickets are electronic tickets. They can be purchased via smartphone or personal computer. They can also be purchased from travel agencies and ticket agencies. \*You must make a reservation for the day of your visit. \*Group discounts are available. \*Please visit the Association's official website for ticket details.

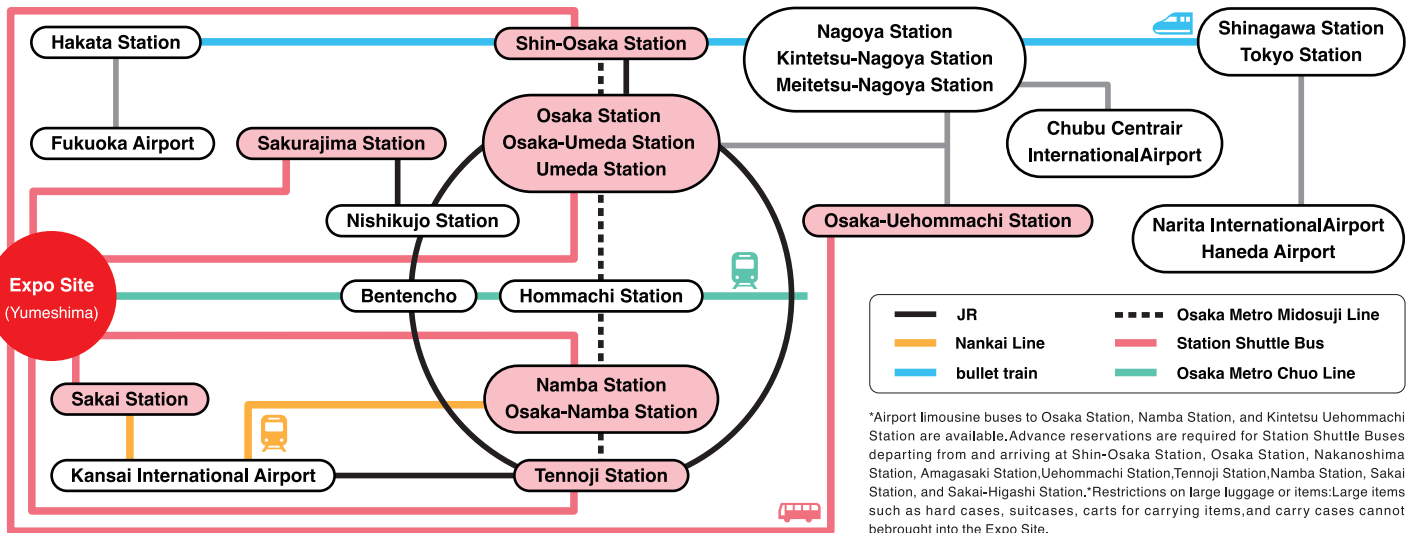
Purchase tickets here

Expo Tickets



## Access

Please use public transportation, such as trains and buses.



\*Airport limousine buses to Osaka Station, Namba Station, and Kintetsu Uehommachi Station are available. Advance reservations are required for Station Shuttle Buses departing from and arriving at Shin-Osaka Station, Osaka Station, Nakanoshima Station, Amagasaki Station, Uehommachi Station, Tennoji Station, Namba Station, Sakai Station, and Sakai-Higashi Station. \*Restrictions on large luggage or items: Large items such as hard cases, suitcases, carts for carrying items, and carry cases cannot be brought into the Expo Site.

## Expo 2025 Official Experiential Travel Guides

The site features videos introducing regions and event information, and also allows visitors to purchase products such as experiential travel packages related to the Expo theme.

Website Dates: 4 Apr, 2024 to 31 Oct, 2025

URL: <https://www.expo2025travel.jp/page/3/en>

Available languages: Japanese, English, Chinese (simplified and traditional), Korean



## Enjoy sightseeing throughout Japan!

