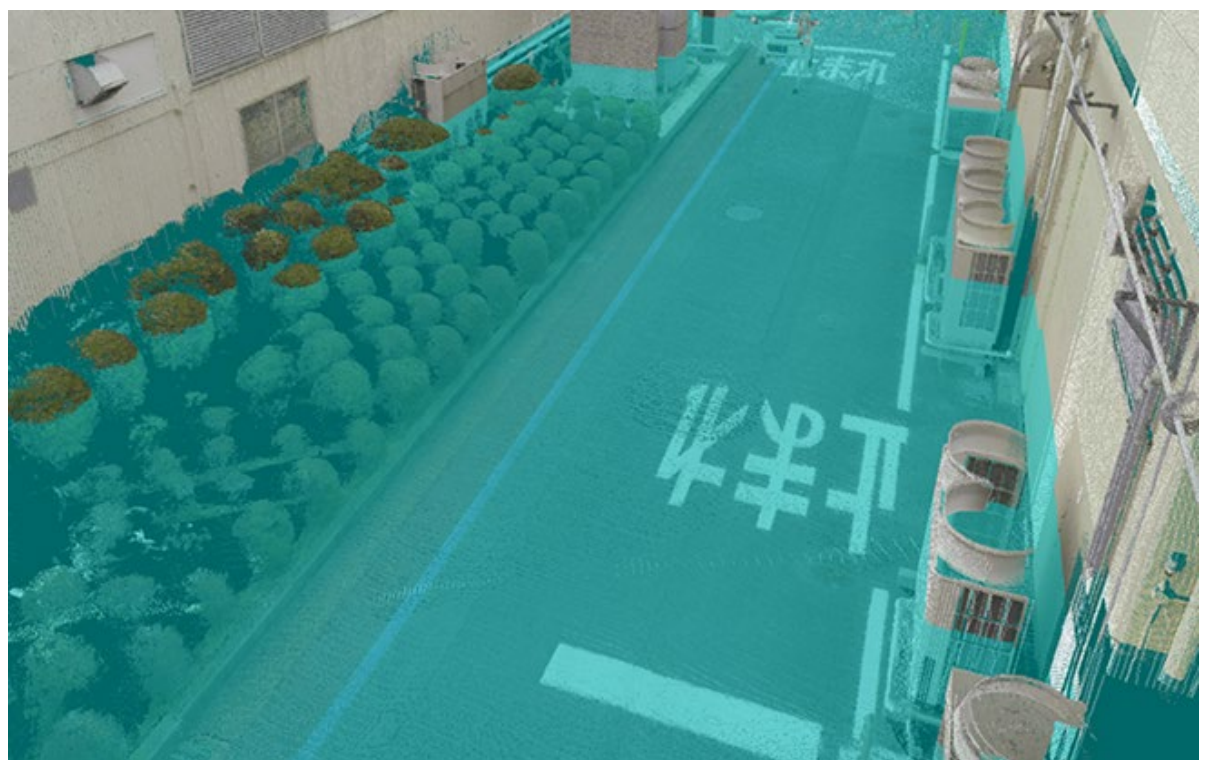
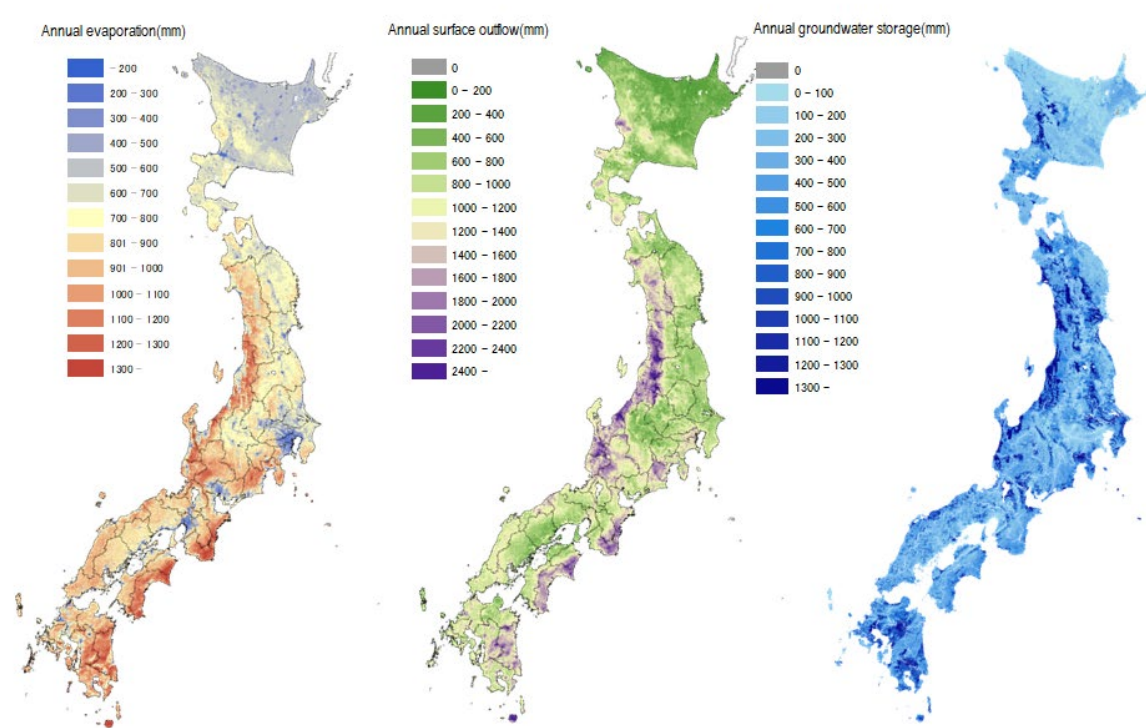


# Water Risk Assessment and BCP Support Services

Water risk refers to various risks related to water such as drought, flood damage, and water quality deterioration. The type and magnitude of water risks highly vary across different areas, depending on factors such as related to the local weather conditions and social infrastructure. The impacts and occurrence of water risks are expected to intensify due to climate change. The impact of water risks to your business would vary depending on the actual conditions of water in your location. Accordingly, our services will help in effectively and efficiently managing the risks with respect to the actual situation through the following:

1. Quantitative evaluation of various water risks by scientific analysis, taking into account the current and future impacts of climate change
2. Assessment of high-impact risks to business/ factory operations.
3. Support in planning and development of risk mitigation measures and BCPs based on the results of evaluation.



Examples of Visualization of Water Asset and Water Risk



Yachiyo Engineering is a Scoring Partner of CDP Water Security

## Achievements of Examples:

- Japan
- Asia: China, India, Indonesia, Singapore, Thailand
- America: Mexico

Yachiyo Engineering Co., Ltd.

[water-risk-lab@yachiyo-eng.co.jp](mailto:water-risk-lab@yachiyo-eng.co.jp) / [intl@Yachiyo-eng.co.jp](mailto:intl@Yachiyo-eng.co.jp)